

STRATEGIC PRIORITIES

2024 - 2030



www.sif.sc

OUR VISION

For Natural Heritage to be recognized as an irreplaceable and invaluable source of life and inspiration.

OUR MISSION

To protect and enhance the understanding of Seychelles' natural heritage sites through engagement with Seychellois and people globally.



OUR VALUES

EVIDENCE-BASED

As the expert voice in Seychelles World Heritage conservation, we base our management on evidence and use the most rigorous, science-based methods to set priorities, evaluate our values, and make informed decisions and actions. By relying on facts and science, we strive to continuously learn and improve to achieve tangible outcomes.

PROGRESSIVE

We are innovative and forward-thinking leaders in World Heritage, island conservation, island research, and public engagement, both nationally and internationally.

INCLUSIVE

We work with local and international stakeholders, across professions and education, for the sole common benefit of Seychelles Natural Heritage conservation.

COLLABORATION

We collaborate with local and international stakeholders from various professions and educational sectors to achieve the shared goal of conserving Seychelles' Natural Heritage. We recognize and value the collective and collaborative efforts that are crucial to our success.

RESPONSIBILITY

We are responsible for our actions as they relate to our mission and to scientific principles.

INTEGRITY

We act with integrity, honesty, accountability, and transparency towards each other, our collaborators, funders, partners, and the public. We strive to earn trust through our competence and by fulfilling our commitments.

ENVIRONMENTALLY AWARE

We prioritize the environment and climate in our operations and work.

SEYCHELLES WORLD HERITAGE

A major portion of Seychelles' natural heritage has been recognized as possessing Outstanding Universal Value by the international community, since it represents some of the most significant shared heritage of humanity. Aldabra Atoll, inscribed by UNESCO in 1982, is an exceptional example of a raised coral atoll and home to the largest giant tortoise population in the world.

The Vallée de Mai, inscribed by UNESCO in 1983, is a surviving remnant of Praslin's palm forest that has remained unchanged since prehistoric times and is home to the iconic coco de mer, which produces the largest seed in the world. Both sites are characterized by their unique geomorphology, high biodiversity and endemism, and relatively undisturbed evolutionary and ecological processes.

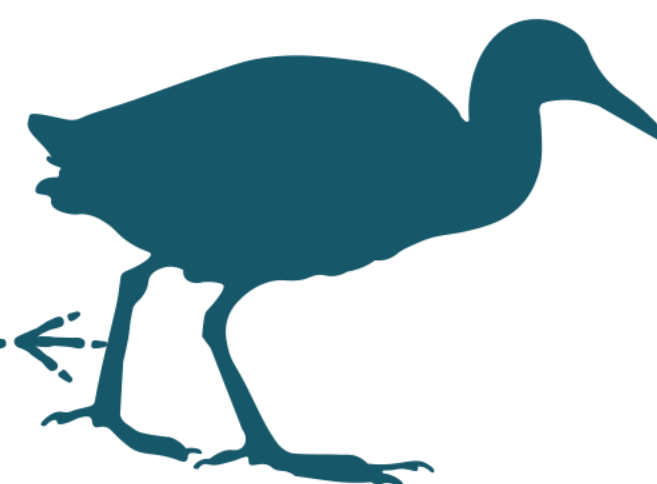


SEYCHELLES ISLANDS FOUNDATION

The Seychelles Islands Foundation (SIF) is a non-profit charitable organization that was established as a public trust by the Government of Seychelles in 1979. In addition to managing the two World Heritage sites, SIF is also responsible for the management of Fond Ferdinand, another stronghold of the coco de mer palm.

The President of the Republic of Seychelles serves as the Patron of the foundation, and its activities are overseen by a Board of Trustees representing individuals and organizations from Seychelles and abroad who have an interest in biodiversity conservation and bring relevant expertise to SIF's management. As the longest established organization working in nature conservation in Seychelles, SIF was initially tasked with managing and conserving the natural life of Aldabra Atoll and initiating and promoting scientific research.

By jointly managing the two UNESCO World Heritage Sites, SIF has adopted a pioneering approach to sustainably operate sites with very different revenue streams, employing a team of 100 staff across four sites on three islands. Our partners include the Government of Seychelles and various national and international non-Governmental organizations and research institutions.



OUR STRATEGY

Our strategy for 2024 to 2026 is focused on improving understanding, safeguarding, and inspiring engagement in the protection of our natural heritage, particularly in light of the dual climate and biodiversity crises. We take a proactive and precautionary approach to conserving biodiversity.

Determining our strategic priorities involved extensive consultation within the foundation and engagement with our partners. During the COVID-19 pandemic, we were reminded of the vulnerability of our sites and the importance of financial sustainability. The international context for our plan is uncertainty, with the ongoing crises of climate change and biodiversity loss affecting the entire planet. However, we approach the future with confidence and local support for our work is strong. In Seychelles, the importance of natural heritage is understood by society as a whole.

Our strategy outlines how we will work towards our vision of natural heritage which is recognized as an invaluable source of life and inspiration. As a financially strong and well-governed trust, we use evidence-based management across our sites and have a talented and dedicated team. We are confident that we will make positive progress towards realizing our vision.

OUR GOALS

- 1 IMPLEMENT EVIDENCE-BASED AND OUTCOME-BASED MANAGEMENT AT ALL SIF SITES
- 2 ADVANCE, PROMOTE AND APPLY SCIENTIFIC PRINCIPLES
- 3 INCREASE THE VISIBILITY OF SEYCHELLES' WORLD HERITAGE TO CREATE IMPACT
- 4 BUILD STRONG AND DIVERSE RELATIONSHIPS

GOAL 1 IMPLEMENT EVIDENCE-BASED AND OUTCOME-BASED MANAGEMENT AT ALL SIF SITES

- Invest in our team to pursue and achieve their career ambitions for SIF's capacity and resilience building
- Strategize on the raising of funds and distribution of resources to sustain our work
- Invest in a headquarters and upgrade site infrastructure to support our sites effectively
- Monitor ecological, social and economic values of the sites and feed results into management



GOAL

2 ADVANCE, PROMOTE AND APPLY SCIENTIFIC PRINCIPLES

- Monitor ecological baselines and continue conservation research at all SIF sites
- Plan and prepare for the Aldabra Rat and Cat Eradication project (RaCE)
- Conduct further research to understand and mitigate the impacts of climate change and invasive alien species at all sites
- Support and mentor early and mid-career scientists and professionals
- Foster strong collaborations with local and internationally recognized researchers and institutions focusing on applied science
- Develop, implement, analyse and use the best available conservation science and a science-based rigor to set priorities, make decisions, take action, and measure results



GOAL

3 INCREASE THE VISIBILITY OF SEYCHELLES' WORLD HERITAGE TO CREATE IMPACT

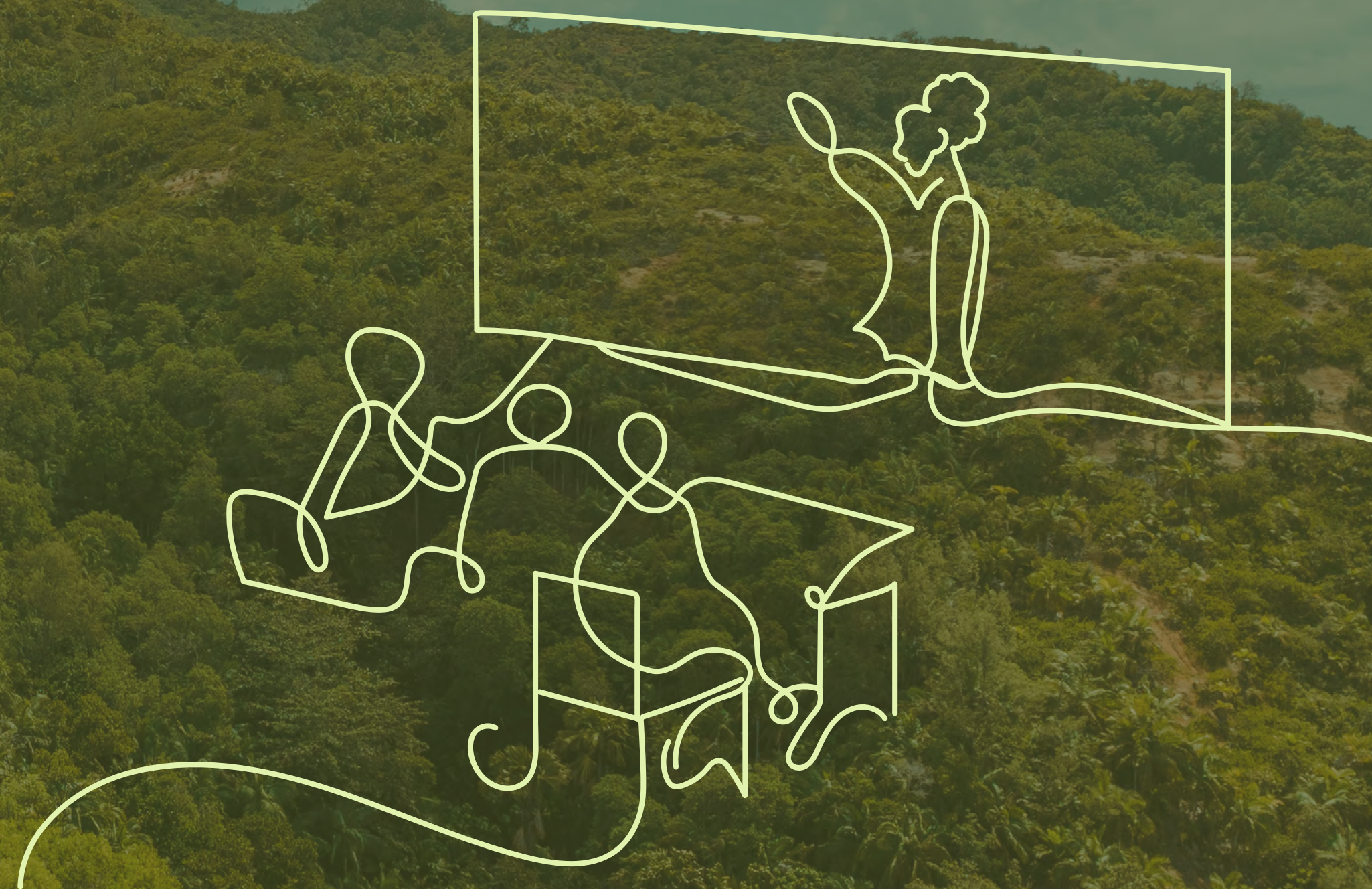
- Widen the reach of our education programme to nurture life-long learning and passion for natural heritage
- Provide outstanding and sustainable opportunities for our communities in science, education, tourism and culture
- Undertake a destination assessment for the Vallée de Mai and then apply for destination certification as sustainable – under a GSTC accredited standard
- Linked to this, for Vallée de Mai also to apply the UNESCO VMAST
- Re-initiate and complete the Aldabra House project



GOAL

4 BUILD STRONG AND DIVERSE RELATIONSHIPS

- Engage with our partners, public groups, businesses, policy and decision-makers to maximize opportunities and benefits for conservation
- Disseminate clear evidence-based messages through our networks
- Reach out to the next generation
- Create a day-to-day workplace climate that welcomes and encourages each of us, valuing the contributions of all



STRATEGIC PRIORITIES

2024 - 2030



www.sif.sc