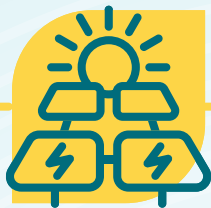


Energy Efficiency

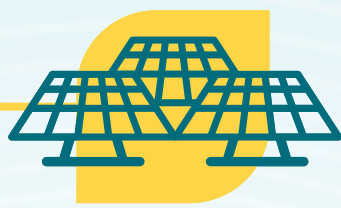
On Aldabra

Photovoltaic System

In 2022, whole PV system was upgraded to support the station for an additional 10 years. From 2012 - 2022, the PV system:



357,258kW/h
of electricity produced



90%
Was supplied to the station's operational needs



374 Tonnes
of CO² avoided



97%
Reduction in Diesel use

Climate Vulnerability Index Assessment



Assessment

Conduct a rapid climate vulnerability index assessment (CVI) to assess what key climate stressors impact key values on Aldabra



Carbon Sinks

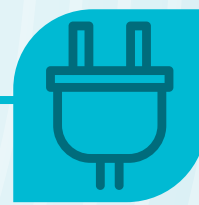
Highlight their key importance on Aldabra



First Step

Understanding the long term impact of climate change to Aldabra

Energy Efficiency Project



A+++

Purchase of energy efficient appliances for Aldabra research station

Sustainability

Guidelines have been drafted to maintain the most sustainable practices throughout the research station.



Rainwater

Collect and reuse for drinking and washing



Garden

To grow our own produce



Seawater

Using seawater to flush toilets rather than using potable water



Storm Shelter

Ensure staff safety during extreme weather events by upgrading the storm shelter



Ecosystem

Preserve key ecosystems on Aldabra



Footsteps

Encourage other organisations in Seychelles to follow in our footsteps

