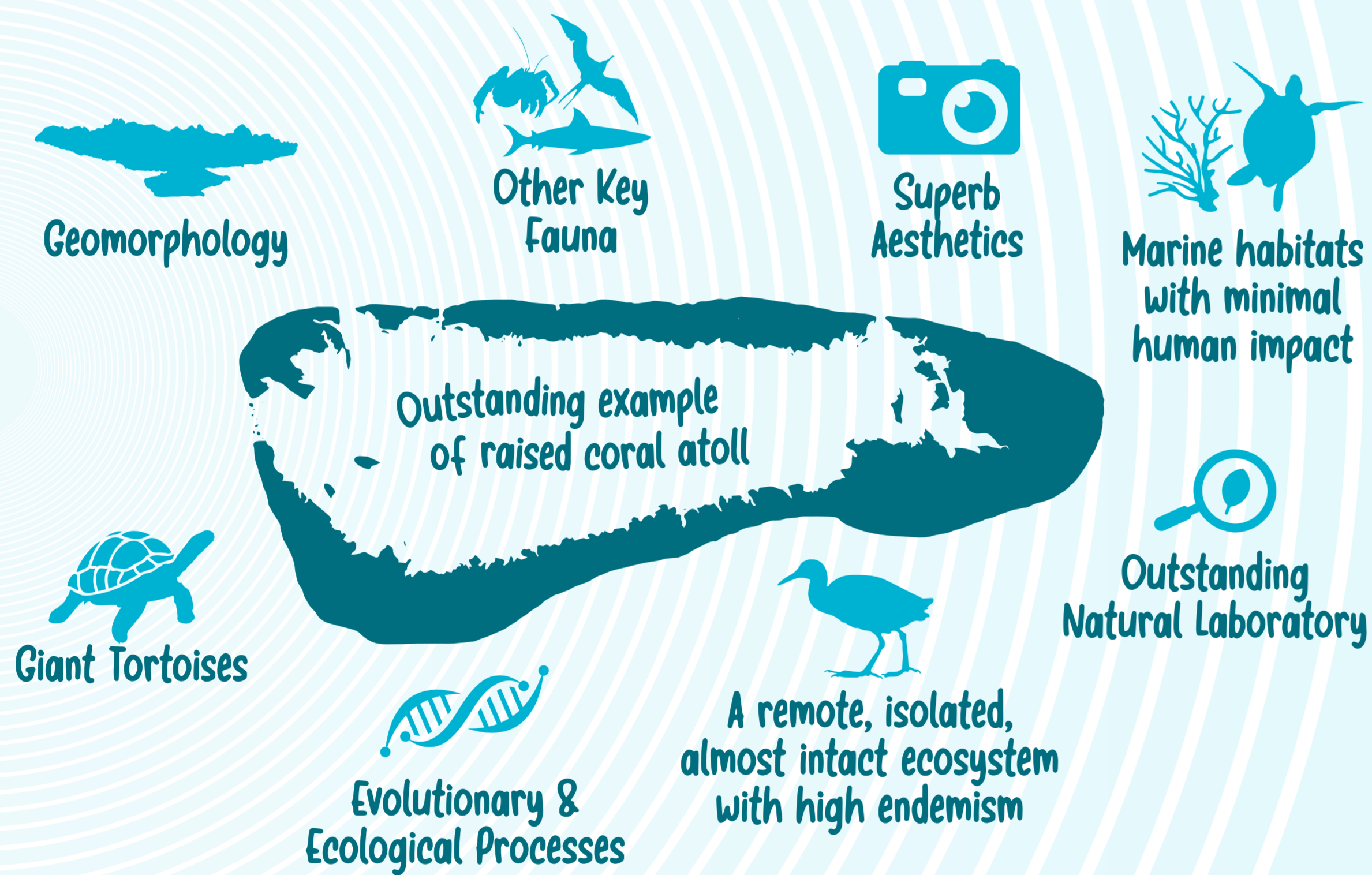


## Outstanding Universal Value The Aldabra Atoll



## A World Heritage Site

Any of various areas or objects inscribed on the United Nations Educational, Scientific and Cultural Organization (UNESCO) World Heritage List. The sites are designated as having Outstanding Universal Value under the Convention Concerning the Protection of the World Cultural and Natural Heritage, which was adopted by UNESCO in 1972.



Source: Encyclopaedia Britannica  
<https://www.britannica.com/topic/World-Heritage-site>

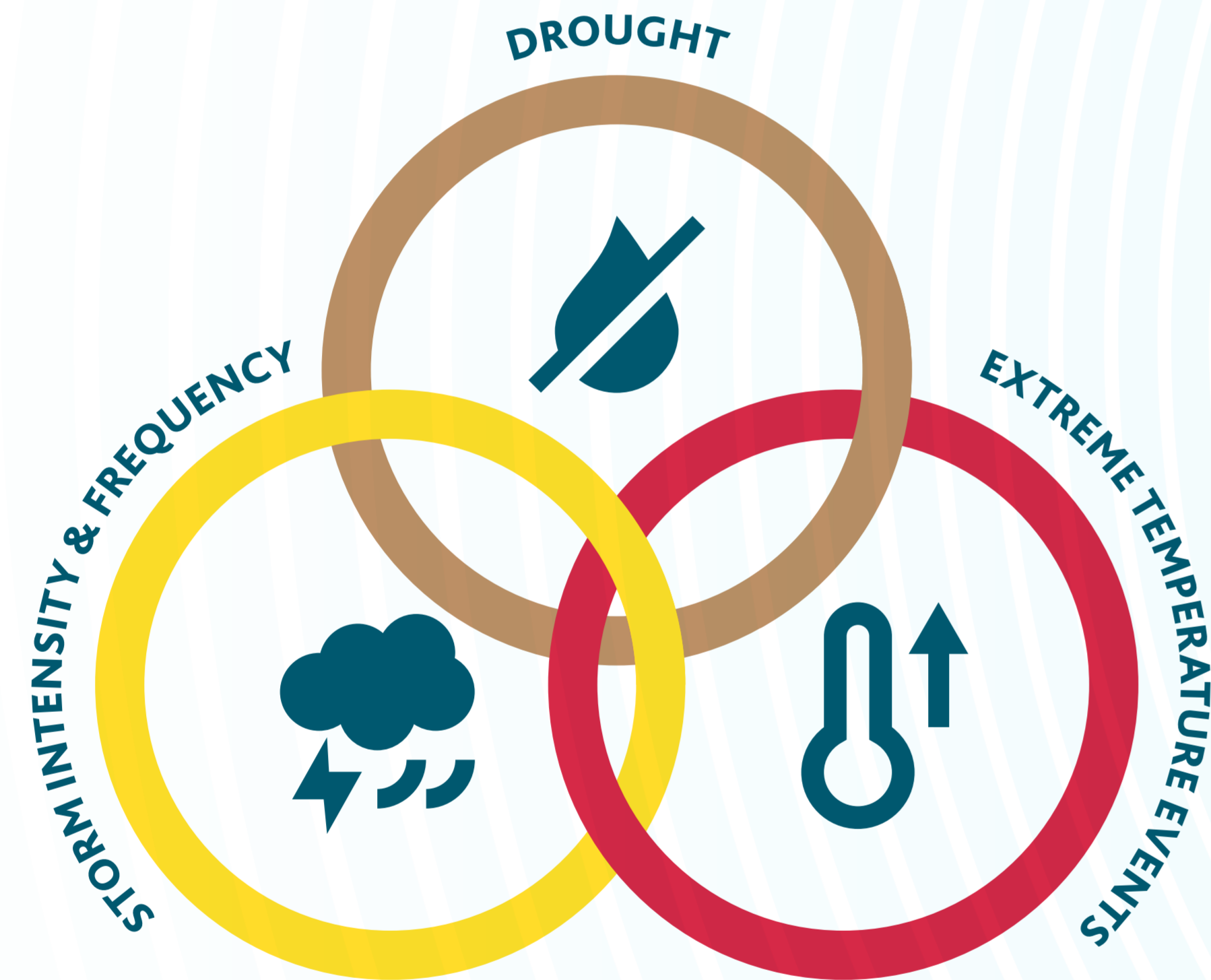
## Outstanding Universal Value

Cultural and/or natural significance which is so exceptional as to transcend national boundaries and to be of common importance for present and future generations of all humanity. As such, the permanent protection of this heritage is of the highest importance to the international community as a whole." In order to be considered of Outstanding Universal Value, a property must meet one or more World Heritage Criteria.

Source: Operational Guidelines for the Implementation of the World Heritage Convention (WHC.19/01 - 10 July 2019)  
<https://whc.unesco.org/en/compendium/100>



## Key Climate Stressors To Aldabra Atoll

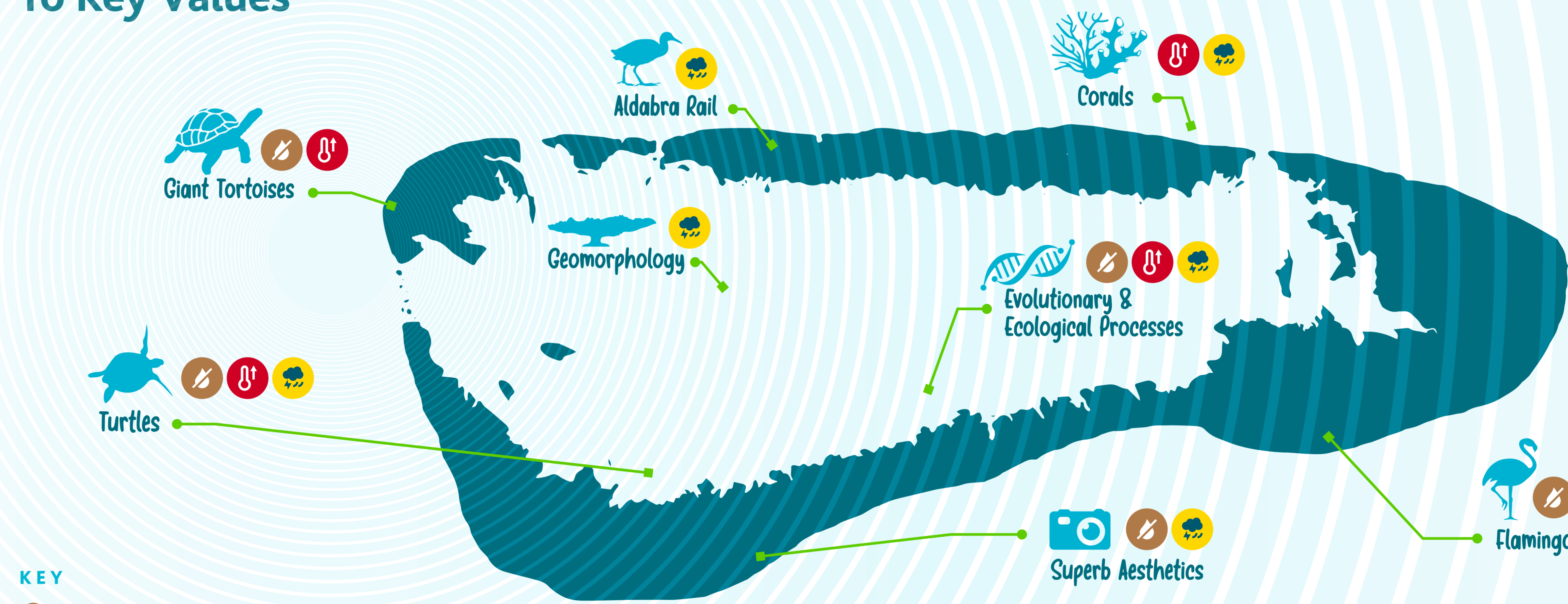


SIF seychelles islands foundation

ROSA LUXEMBURG FOUNDATION

aldabra research station est. 1971

## Impact of Climate Stressors To Key Values



### KEY

- Drought
- Extreme Temperature Events
- Storm Intensity & Frequency

SIF seychelles islands foundation

ROSA LUXEMBURG FOUNDATION

aldabra research station est. 1971

aldabra research station est. 1971

SIF seychelles islands foundation

ROSA LUXEMBURG FOUNDATION

# CLIMATE VULNERABILITY INDEX (CVI)

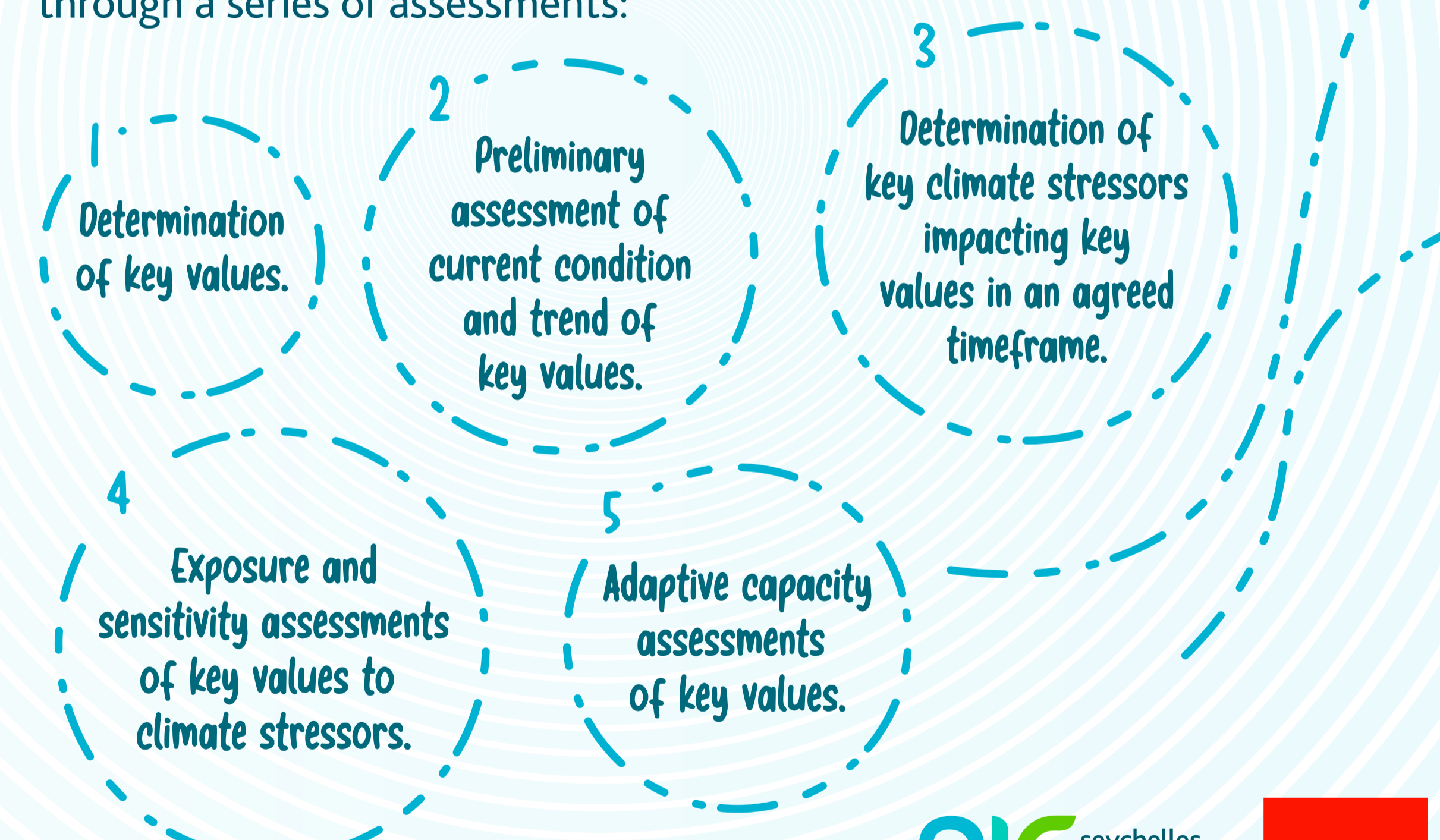
## General CVI Process on Aldabra



### What is a CVI?



A climate vulnerability index (CVI) is a rapid assessment tool specifically developed for the application in World Heritage properties. It assesses the vulnerability of the site's Outstanding Universal Values to climate change through a series of assessments:



### Why conduct a CVI?

Climate change is one of the fastest growing global threat to World Heritage properties, many of which are already being impacted.

The credible basis from the CVI consultation will help inform management and adaptation of the ecosystem and its attributes in the face of the changing climate.

### Why conduct a CVI on Aldabra?

Aldabra is home to many unique attributes and wildlife, whose roles are vital in the functioning of ecosystems regionally and globally. A CVI will put Aldabra in the best position to combat the issues of climate change.



### What are the outcomes of a CVI?

The assessed vulnerability of the Outstanding Universal Value to key climate stressors which will better inform its management and protection as well as aid towards an Aldabra climate change adaptation plan.

