

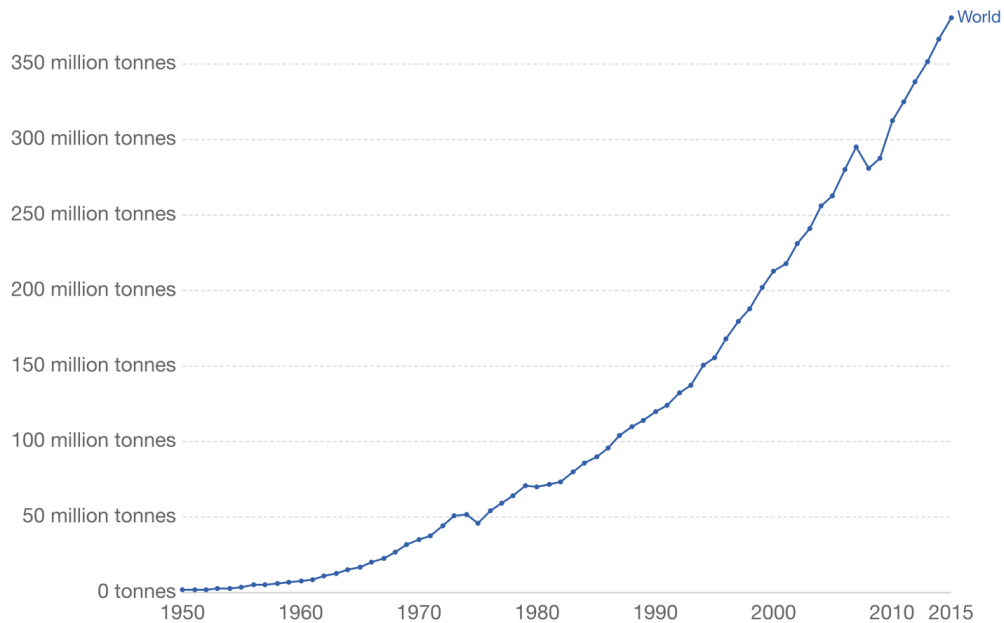
The Aldabra Clean-Up Project

Tackling ocean plastic pollution through action, education and research



Global plastics production

Annual global polymer resin and fiber production (plastic production), measured in metric tonnes per year.



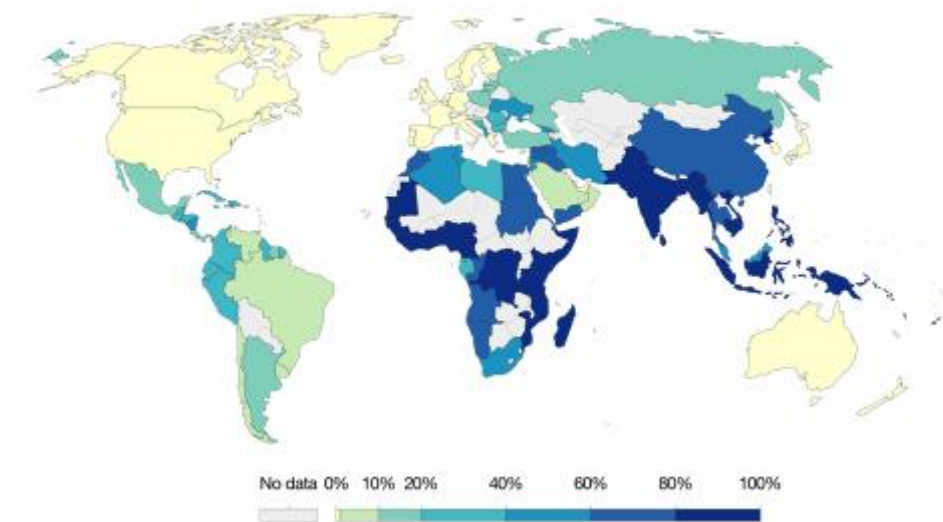
Source: Geyer et al. (2017)

CC BY-SA

Our World in Data

Share of plastic waste that is inadequately managed, 2010

Share of total plastic waste that is inadequately managed. Inadequately disposed waste is not formally managed and includes disposal in dumps or open, uncontrolled landfills, where it is not fully contained. Inadequately managed waste has high risk of polluting rivers and oceans. This does not include 'littered' plastic waste, which is approximately 2% of total waste (including high-income countries).

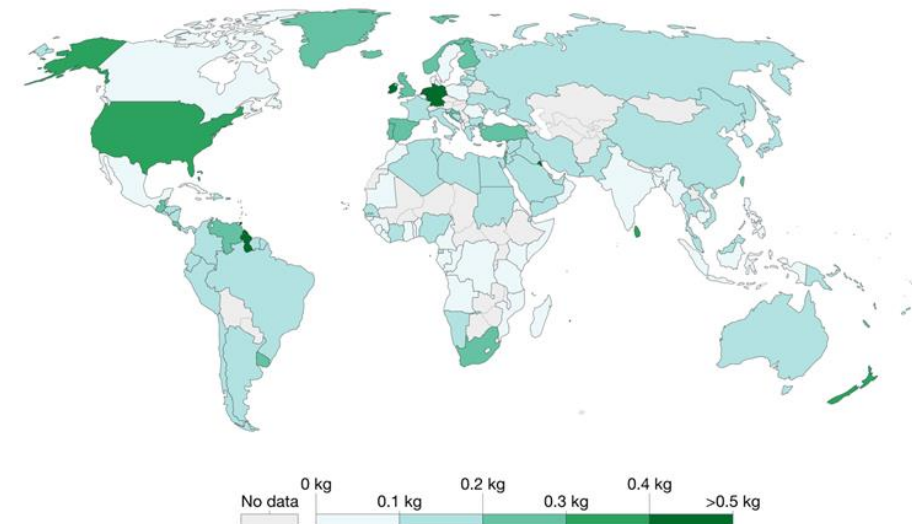


Our World in Data

A Global Problem

Plastic waste generation per person, 2010

Daily plastic waste generation per person, measured in kilograms per person per day. This measures the overall per capita plastic waste generation rate prior to waste management, recycling or incineration. It does not therefore directly indicate the risk of pollution to waterways or marine environments.



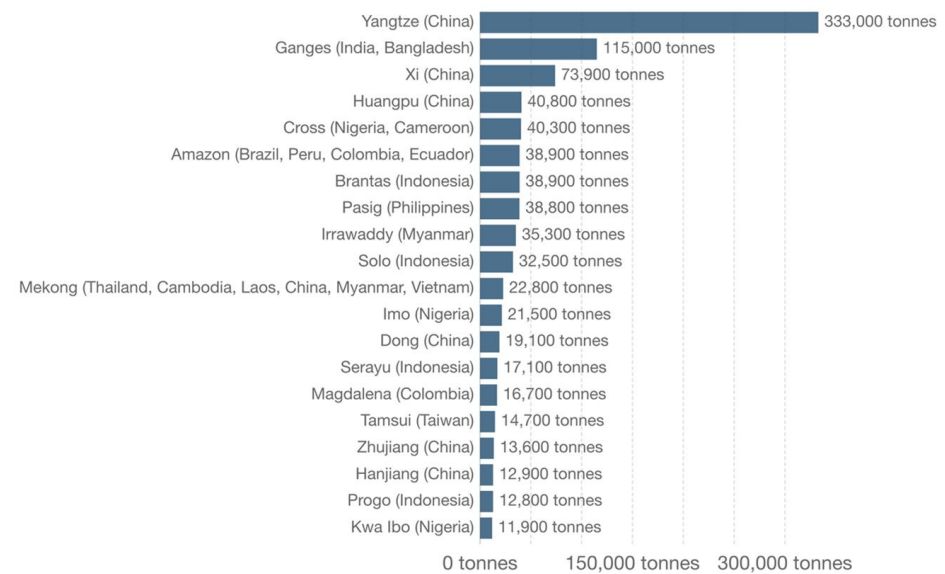
Source: Jambeck et al. (2015)

CC BY-SA

Our World in Data

Plastic ocean input from top 20 rivers, 2015

Plastic input to the ocean from the top 20 polluting rivers across the world. Shown is the given river, its location, and estimated annual input of plastic to the oceans in tonnes.



Source: Lebreton et al. (2017)

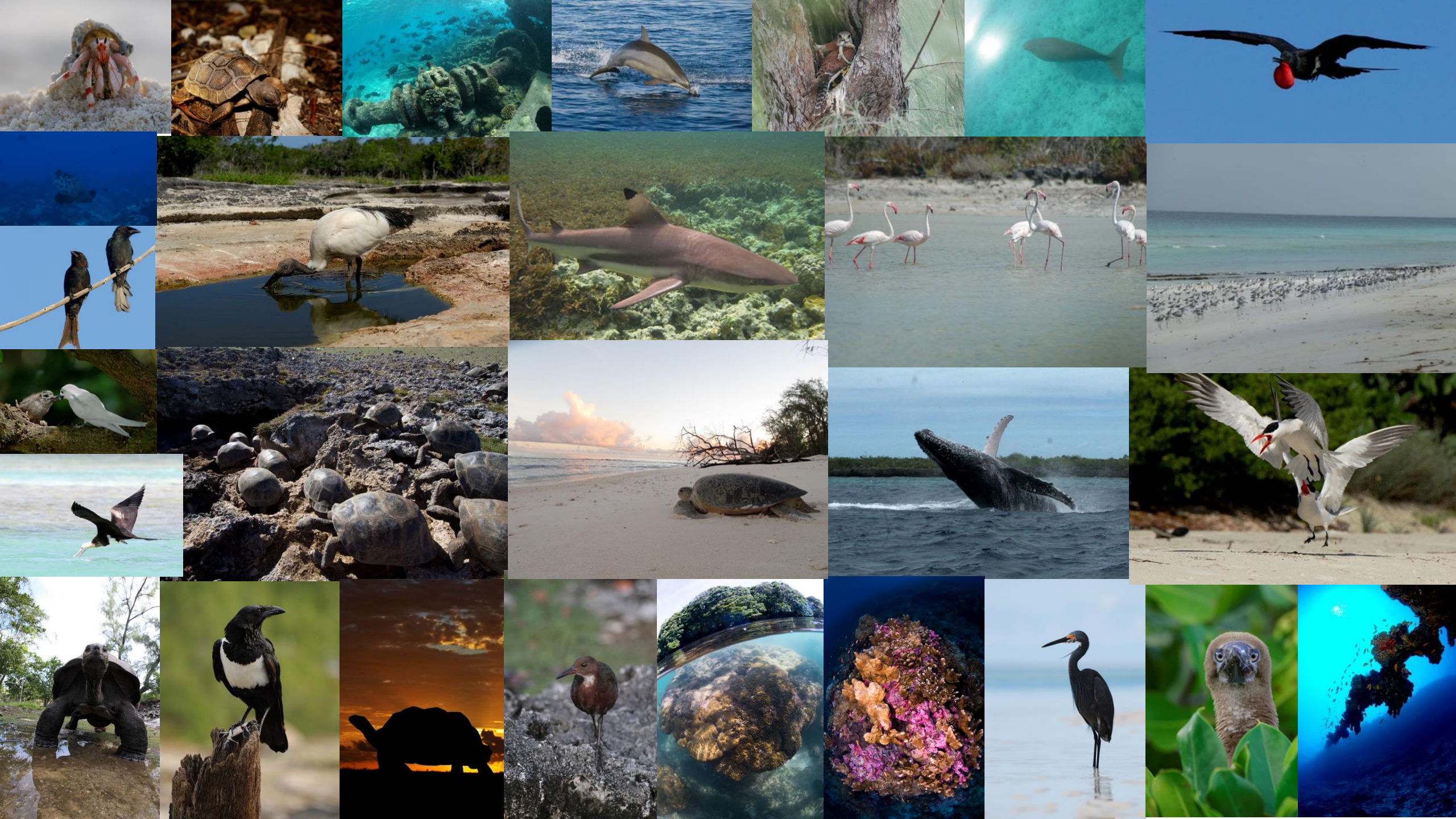
CC BY-SA

Our World in Data

How does this global problem impact one of the world's most remote islands?



What can be done about it?

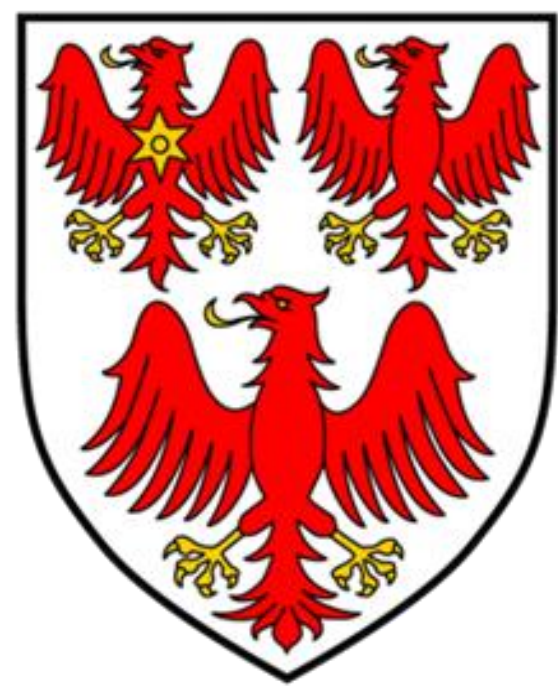




The problem for Aldabra:



So SIF joined forces with the Queens College, University of Oxford, to form the Aldabra Clean-Up Project (ACUP).

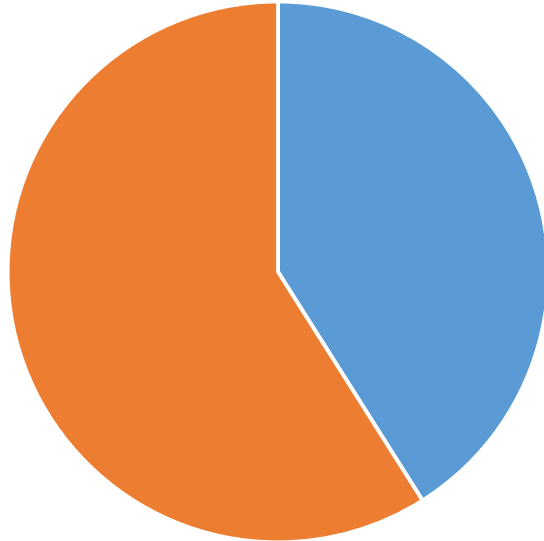


In addition to a five-week expedition, that aimed to remove 50 metric tonnes or 500 m³ of plastic pollution, ACUP took on four objectives:

1. Raise £150,000;
2. Raise awareness locally & internationally;
3. Research the marine debris found on Aldabra;
4. Reprocess the collected marine debris.

✓ Raise SCR2.7 million / £150,000: By February 2019 ACUP had raised SCR 3.9 million/ £222,000 or 148% of its original aim!

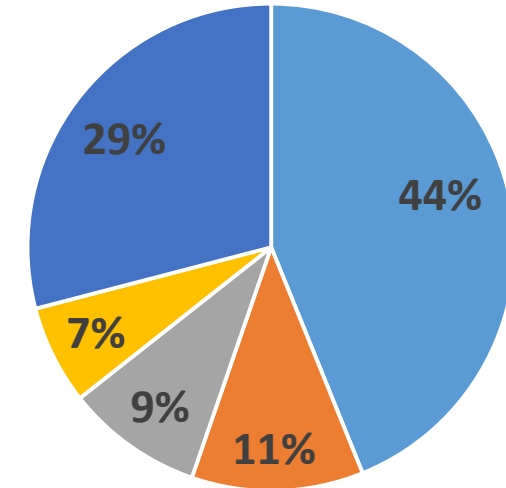
Sources of ACUP funds



■ Money raised in Seychelles ■ Money raised abroad



Breakdown of ACUP funding sources



■ Intl Corp ■ Sey Corp ■ SIF ■ Crowdfunding ■ Grants

Sponsorship guide

'Moniman pou limanite' 'Prezerve a jamais pou leternite'
Patrick Victor - Aldabra

Eliminating ocean plastic on Aldabra
Sharing knowledge and research
Promoting positive steps to reduce plastic use

Sponsorship Opportunities

Become an official project sponsor
Choose from Gold, Silver or Bronze sponsorship packages. In each, your name will be included on our website, on our blog, in all publications, clothing and promotional materials. You will receive an invitation for up to 100 people to attend the post project report and reception at Queen's College, Oxford University, and we will also mention you or your company name on our social media messaging. Please refer to our sponsorship table below for full details.

Gold Sponsor SCR250,000	Silver Sponsor SCR100,000	Bronze Sponsor SCR50,000
A three minute video produced by the team for your organisation.	A three minute video produced by the team for your organisation.	A three minute video produced by the team for your organisation.
A three minute personalised press video for your chosen audience (staff, customers, students)	A three minute personalised press video for your chosen audience (staff, customers, students)	A three minute personalised press video for your chosen audience (staff, customers, students)
Name included on website, on our blog, in all publications, clothing and promotional materials.	Name included on website, on our blog, in all publications, clothing and promotional materials.	Name included on website, on our blog, in all publications, clothing and promotional materials.
Invitation of up to 100 people to attend a post project reception.	Invitation of up to 80 people to attend a post project reception.	Invitation of up to 50 people to attend a post project reception.
An agreed schedule of your photographs or video to be included in our social media messaging.	An agreed schedule of your photographs or video to be included in our social media messaging.	An agreed schedule of your photographs or video to be included in our social media messaging.

There are also other ways you can support

Any contribution can make a difference to the existence of these precious species



To achieve this ACUP:

- **Approached** over 50 businesses in Seychelles for CSR & over 40 international corporations;
- **Applied** to 15 grants (5 successful);
- **Reached** out to various organisations for in-kind support & other assistance;
- **Crowdfunded** SCR 277,000 / £15,540 (or 7%) of funds raised from 107 sponsors (donations ranged between £1 & £500).



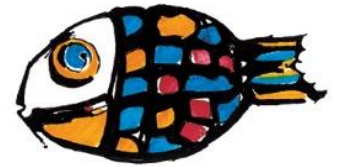
SEYCHELLES CONSERVATION
AND CLIMATE ADAPTATION
TRUST
SeyCCAT



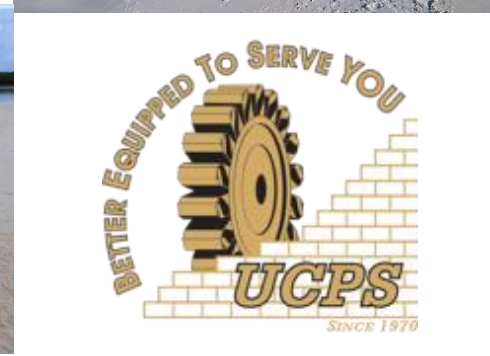
RAFFLES
SEYCHELLES



NOBLE CALEDONIA
CHARITABLE TRUST



Eden Island
SEYCHELLES



✓ Raise awareness locally & internationally: Momentum still growing!

Bel Ombre • Beau Vallon • Blaise • North East Point • Penneveron • Au Cap
Ane Royale • Ane Forbes • Indravana • Grand Port • Ane Galette

Saturday 15th September 2018 | 9.30 - 11.30 AM

SEYCHELLES' BIGGEST BEACH CLEAN

Ane La Mouche • Bathwana • Por Launay • Cap Tany • Corf Island • Ste Ane
Ane Kefau (Prasidy) • Ane Sava (La Digue) • Ane Muzge (Prasidy)

Saturday 15th September 2018 | 9.30 - 11.30 AM



MARINE PLASTIC POLLUTION: How long until it's gone?

The Estimated Decomposition Rate of Plastics in Our Oceans

	Cigarette butts The most often discarded piece of waste worldwide	10—15 years
	Plastic bags Look like jelly fish and are consumed by sea turtles	10—100 years
	Drinking straws Straws are so light and small that they are often blown into the ocean by the wind	100 —500 year
	Diapers/ Sanitary pads	250 —500 year
	Toothbrushes Most people use a new toothbrush every three months, nearly 300 in a lifetime!	500+ years
	Fishing line Birds, marine mammals, fish and crustaceans can get tangled in line	600 years
	PET bottle Recycling PET bottles reduces their impact, but even recycled bottles have environmental consequences	450—1000 year






WHY?

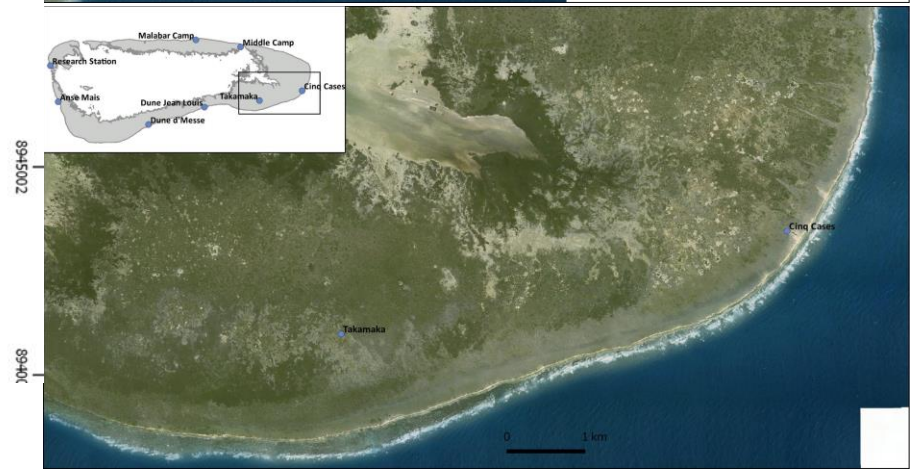
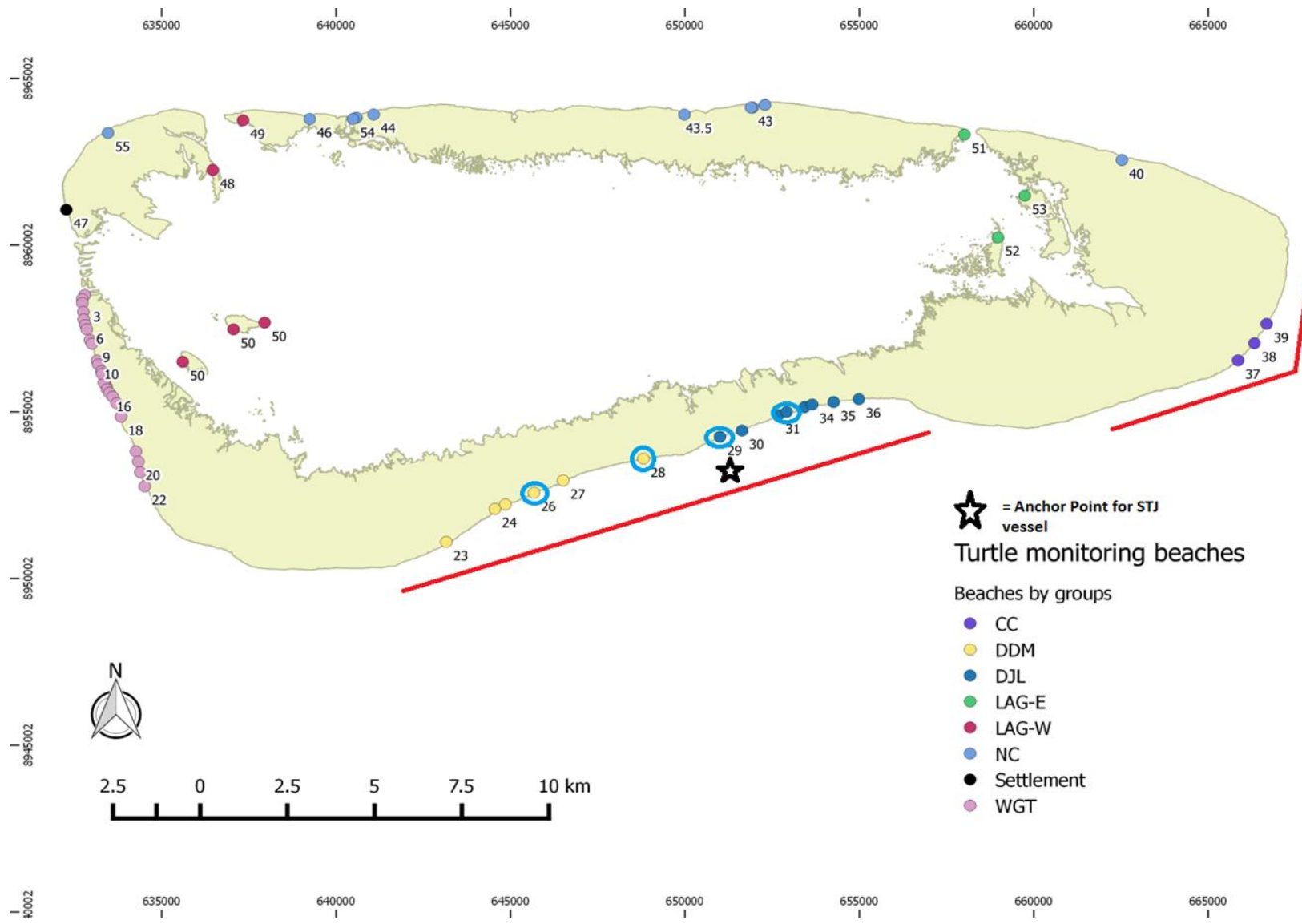
For ACUP to have a meaningful impact it has to be part of the solution that tackles the issue at its source: plastic consumption (particularly single-use) & pollution/littering.

This means;

- Encouraging societal & individual changes through education & outreach activities;
- Ensuring that the expedition was covered by local & international media;
- The team has & will continue to engage with & educate the public on marine plastic pollution on Aldabra, in Seychelles & globally.



Aldabra with beaches marked and area of coastline cleared





Results:

1) 25.75 metric tonnes of marine debris removed from Aldabra;

2) 10 new Aldabra ambassadors / environmental campaigners;

3) A baseline for future research into composition, origin & accumulation rate of marine debris on Aldabra.

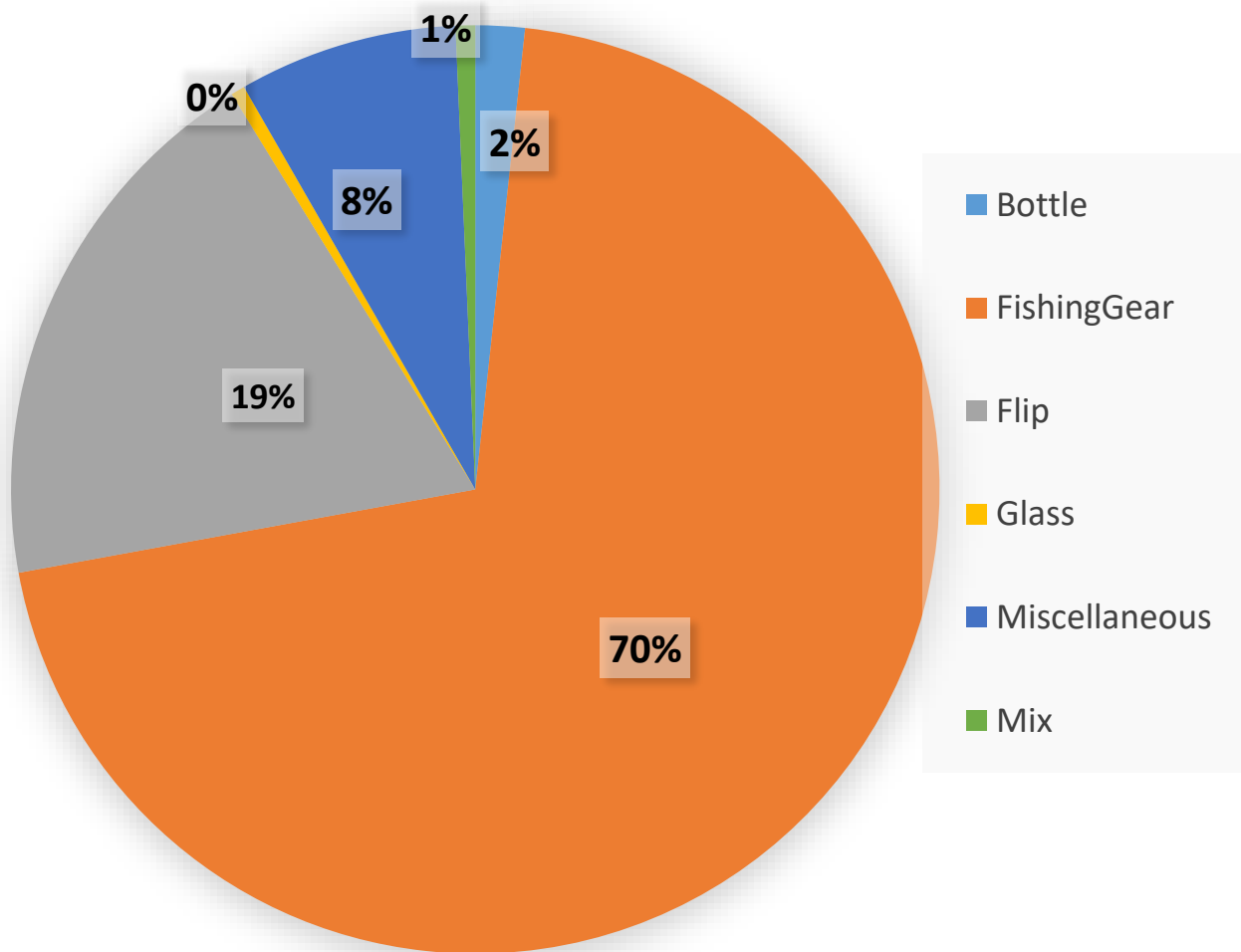


Research the marine debris found on Aldabra: ongoing

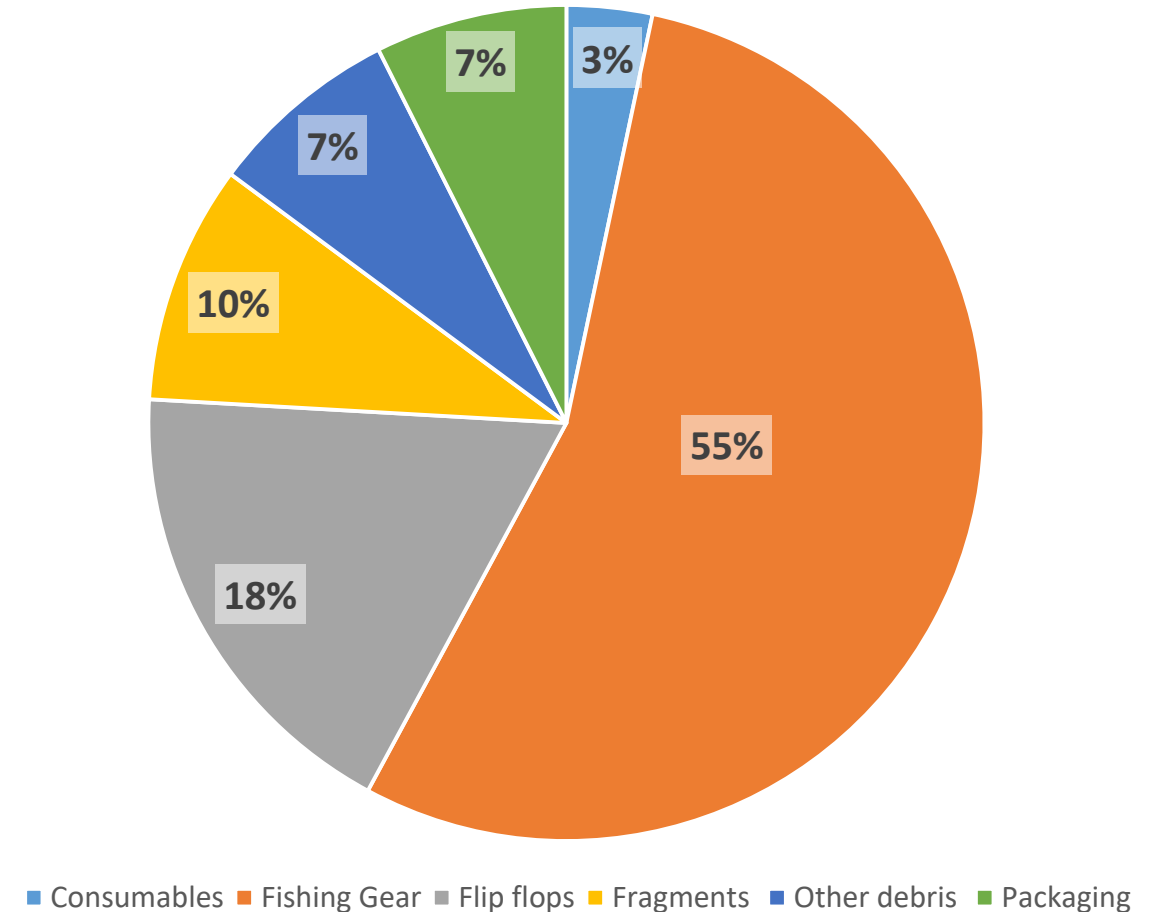
We set out with the question of what can we learn from the waste that has accumulated on Aldabra?

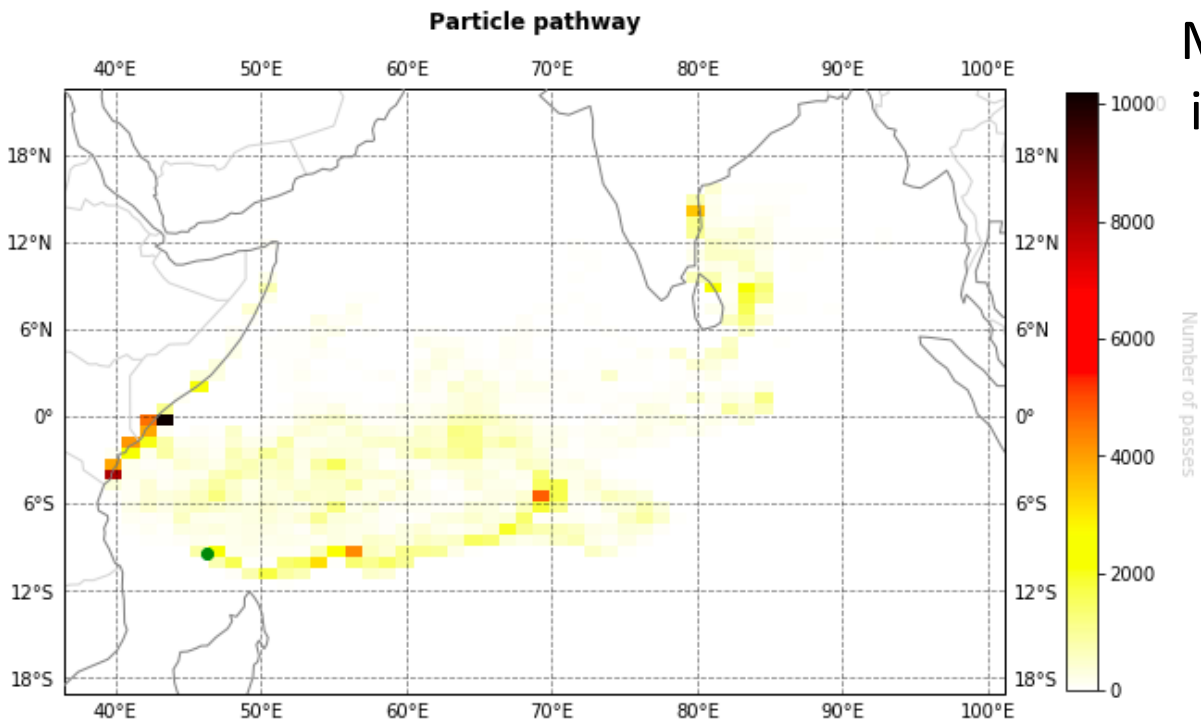
Initial results from Dune-Jean Louis (DJL) phase 1 (only indicative).

Composition (%) of 11,606 kg of waste collected from DJL during phase 1



Composition (%) of 263 kg of waste collected from DJL transect surveys during phase 1





Modelling & observations indicate that **most of the consumables found are from SE Asia & East Africa.**

However, fishing gear collected, such as FADs can also originate from activities in Seychelles.





Reprocess the collected marine debris: (ongoing & ambitious, but we believe it's not enough to move the problem elsewhere!)

ACUP aims to prevent 40-60% of collected waste from being landfilled. Landscape and Waste Management Agency has agreed for the collected waste to be stored on their premises until October 2019.





The SIF board of trustees has agreed that there will be a second ACUP expedition. Watch this space!



Who won?

MARINE PLASTIC POLLUTION: How long until it's gone?

The Estimated Decomposition Rate of Plastics in Our Oceans

 Cigarette butts The most often discarded piece of waste worldwide	10—15 years
 Plastic bags Look like jelly fish and are consumed by sea turtles	10—100 years
 Drinking straws Straws are so light and small that they are often blown into the ocean by the wind	100 —500 years
 Diapers/ Sanitary pads	250 —500 years
 Toothbrushes Most people use a new toothbrush every three months, nearly 300 in a lifetime!	500+ years
 Fishing line Birds, marine mammals, fish and crustaceans can get tangled in line	600 years
 PET bottle Recycling PET bottles reduces their impact, but even recycled bottles have environmental consequences	450—1000 years

Thank you for your time.

Any questions?

Would you like some marine debris?

If you would like to keep up to date with ACUP please follow:

Facebook: @AldabraCleanUp

Twitter: @AldabraCleanUp

Instagram: @aldabra_cleanup

Or contact:

Jeremy Raguain

Email: research@sif.sc

Telephone: +248 26 31 167