



Seychelles Islands Foundation

ANNUAL REPORT 2021



www.sif.sc



Dr Frauke Fleischer-Dogley
Chief Executive Officer

CEO's Message

This year marks the 50th anniversary of continuous operation at the Aldabra research station, making it the longest-running tropical research station in the world. It is a great privilege to speak on behalf of Aldabra Atoll and all those who have dedicated themselves to its protection, both within and outside Seychelles, past and present.

While the costs of establishing and maintaining a research station on Aldabra have been immense, the benefits clearly justify our efforts. Fifty years on, we can see the dividends of Seychelles' early and continuous investment in securing a permanent scientific presence on our remotest atoll, an incredible feat for a newly independent state beginning to stand on its own. Furthermore, it is crucial for us all to remember that this incredible milestone would not be possible without the support of Seychelles' other UNESCO World Heritage Site, the Vallée de Mai.

Established by the Royal Society on June 30th, 1971, following the historic "Aldabra affair" in the late 1960s, where it was protected from a proposed military development thanks to the efforts of scientists and conservationists, Aldabra is the living proof of successful conservation stories when we invest in science and conservation for the benefit of natural heritage. In 1979, the running of the research station was handed over to the Seychelles Islands Foundation, and in 1982 it was declared a UNESCO Marine World Heritage Site.

Aldabra stands as a sanctuary for many endemic and migratory species, including many endangered and rare ones. The atoll is home to the largest population of giant tortoises in the world, the last remaining flightless bird of the Indian Ocean, the Aldabra white-throated rail, and the largest mangrove extent in the Seychelles, serving as a nesting and breeding ground for tens of thousands of frigatebirds and red-footed boobies.

***“ALDABRA IS THE
LIVING PROOF
OF SUCCESSFUL
CONSERVATION
STORIES WHEN WE
INVEST IN SCIENCE
AND CONSERVATION
FOR THE BENEFIT OF
NATURAL HERITAGE.”***

This remote atoll, one of Seychelles' two gifts to humanity, remains a crucial source of scientific data and hope. Over 40 years of protection and research have yielded significant achievements. For instance, this year, we have recorded a 500% increase in the population of nesting green turtles, and the second-largest population of this endangered species in the Western Indian Ocean.

The Aldabra Reef Monitoring Programme and the extension of the marine protected area have been instrumental in securing political and economic support for the Seychelles Marine Spatial Plan. This plan not only protects 30% of Seychelles' Exclusive Economic Zone but also helps manage the remaining 70%.

These milestones remind us of the crucial role of on-the-ground knowledge and science in protecting our natural heritage. Through our various collaborations with local and international stakeholders, we continue to push the boundaries of our understanding, enabling us to address challenges such as climate change and marine pollution. With an ambitious project in our future vision —the eradication of feral cats and rats on Aldabra—we continue to build a resilient future for a unique atoll that holds hope and pride in the hearts of many Seychellois.



Dr Frauke Fleischer-Dogley
Chief Executive Officer, Seychelles Islands Foundation

Highlights of 2021



Aldabra Research Station 50th Celebrations

On June 30th, the Aldabra research station marked 50 years of continuous operation. This feat of logistics, research and human dedication makes it one of the world's longest continuously running tropical research stations. To mark this incredible milestone, we held many activities throughout the year with our local and international partners and are gearing up for an international symposium in 2022.



1971



2021

©SIF



©SIF



Yellow crazy ant control outcomes

Yellow crazy ant surveys using pitfall traps were carried out in August across the Vallée de Mai, its buffer zone and Fond Peper. Of 99 pitfall survey points across these areas, only one point (in the buffer zone) showed yellow crazy ants!



SIF efforts lead to greater protection for island endemics

Several years of work, research, and communication by SIF and various national stakeholders, has resulted in the Seychelles Cabinet of Ministers approving regulations that will protect two Seychelles endemic species: the Seychelles tiger chameleon (*Archaius tigris*) and the giant bronze gecko (*Ailuronyx trachygaster*). The Cabinet's approval of the drafting of the Trade in Wild Fauna and Flora Bill 2020, will help to protect specific Seychelles fauna and flora by prohibiting their capture, possession or trade.



SIF science sets new records

In 2021, SIF supported and contributed to 10 published scientific papers! This is an incredible record number for us.

“Our scientific research is expanding every year and this is a testament to the amazing work of the research team at both sites, the high-quality data they collect, and all of SIF's support of researchers. An additional milestone this year is that, for the first time, two of these papers have been led by Seychellois authors – Annabelle Constance and Jennifer Appoo.” said Dr Nancy Bunbury.





Presidential visit to Aldabra

In April, the Aldabra research station hosted Seychelles' President and SIF's Patron, Wavel Ramkalawan. This was the President's first official visit to the remote atoll in his capacity as head of state. The President was joined by the First Lady, the Minister of Foreign Affairs and Tourism, the Minister for Agriculture, Climate Change and Environment and members of the Diplomatic Corps, made up of Ambassadors, High Commissioners and representatives from China, France, India, Japan, Russia, Sri Lanka and the United Kingdom. SIF's CEO, Dr Frauke Fleischer-Dogley welcomed the delegation on Aldabra, providing key insights into SIF's current efforts and future plans.



Ecosystem monitoring commences at Fond Ferdinand

The team kickstarted monitoring programmes at the Fond Ferdinand reserve, expanding surveys that are already conducted at Vallée de Mai.



©SIF



©Martin van Rooyen



Snail discovery

The Aldabra team confirmed the presence of the endemic banded snail on south-west Grande Terre. The first new snail sighting was found by Island Manager, Jude Brice, and several others were then found by the team.



Virtual book launch

In collaboration with the Ministry of Education, SIF officially launched an electronic activity book: "Visit the Vallée de Mai with Rachel and Ms. Maria".



©SIF

3 Remembering Katy Beaver

The SIF extended family was very saddened to learn of the passing of Katy Beaver. Katy was an incredible force for nature who made tremendous contributions to the advancement of environmental science and education in Seychelles and beyond. For SIF, Katy was a fully committed and wise team member as well as a loyal friend, who not only served as SIF's Science Committee Secretary (2004 to 2008), but was also a very active member for 13 years, driving and organising this essential component of SIF's work. She was also a co-editor and illustrator of the book, *A Focus on Aldabra* (1991), co-wrote Aldabra's and the Vallée de Mai's first management plans (Aldabra 1998-2005, Vallée de Mai 2002-2007), contributed to UNESCO's first Periodic Reporting Cycle of both sites' management effectiveness (2002) and led or supported many superb and effective educational initiatives through her time with SIF, including co-editing the SIF newsletter.

A thorough researcher, effective communicator and passionate protector of nature, Katy wrote and illustrated many educational books and field guides on Seychelles' plants making them accessible for adults, as well as children. In her almost 40 years of working and living in Seychelles, she was a teacher, ran several wildlife clubs and co-founded the Plant Conservation Action Group, leading the publishing of its popular newsletter *Kapisen*.



In 2017, Katy's inspiring work was recognised in the naming of a newly discovered species of fern Hymenophyllaceae - 'Fouzer kati'/ 'Katy's fern' – (*Didymoglossum beaverianum*). Katy Beaver will be profoundly missed, but her philosophy and ethos for the research, protection and sharing of our natural heritage will be continued by the hundreds if not thousands of people that have been touched by her insights and example.



Katy and a copy of the framed fern named after her
©Patrick Joubert



©Lindsay Chong-Seng

4

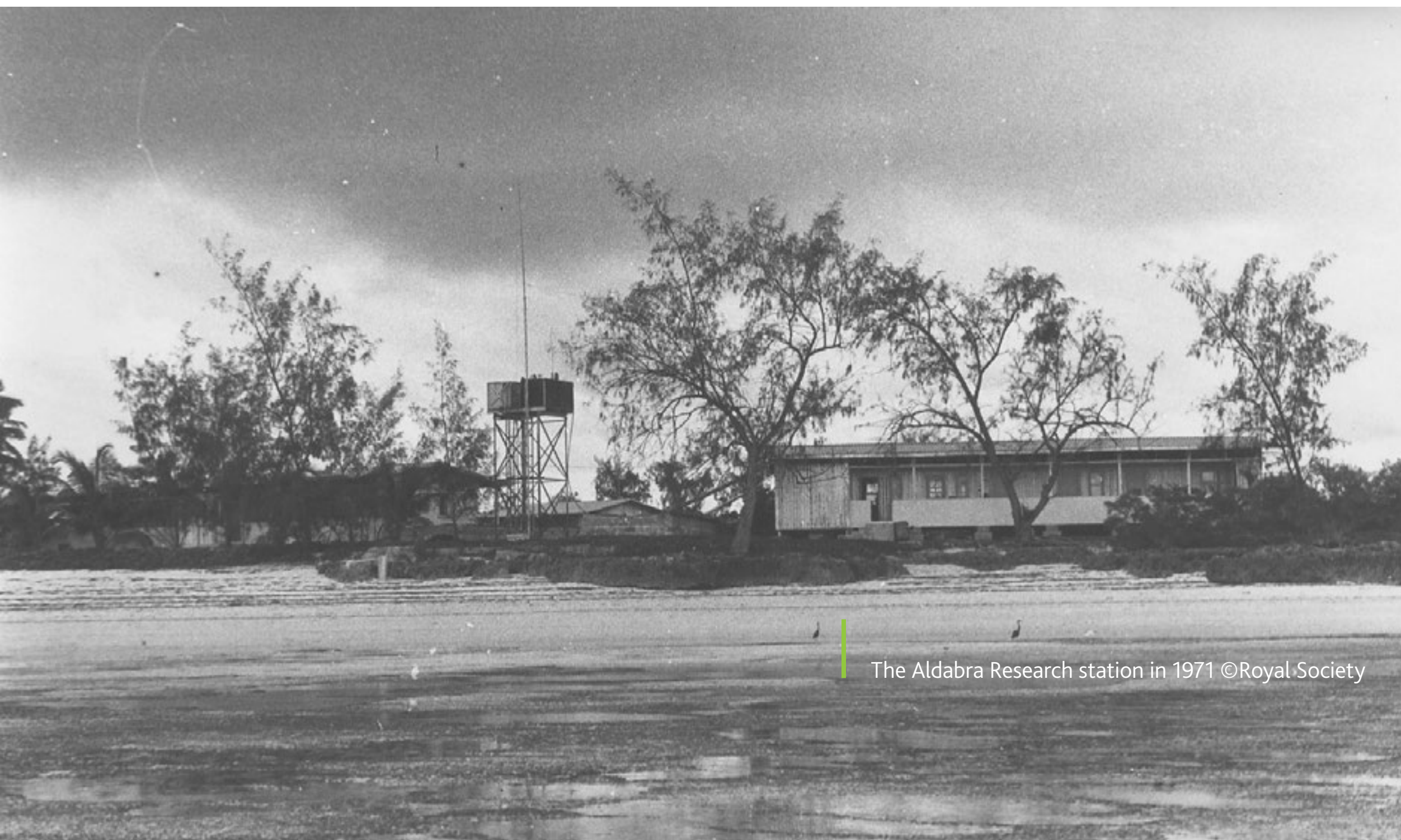
Aldabra Research Station



4.1 Aldabra Research Station 50th Anniversary

The Launch

The Aldabra research station celebrates half a century of uninterrupted operation since its establishment on June 30th, 2021. This remarkable achievement, characterized by efficient logistics, extensive research, and unwavering human commitment, positions it as one of the globe's enduring tropical research stations. This milestone is made even more astounding when considering the fact that Seychelles, in 1979, despite being a newly independent small island developing state, decided to commit political will and a great deal of resources to take over the challenge of managing one of the most remote research stations from The Royal Society, one of the world's most renowned scientific institutions.



4.2 Celebration Events and Outreach Campaign

1.

The first social media post was released in January. Two to four posts a month were dedicated to showcasing stories, photos, videos, facts, and events on the science, history of conservation efforts, people, changes and challenges.



Highlighting the challenges of supplying Aldabra in the past ©Mary Gillham Archive Project

2.

One of these events included a virtual 'beach side chat' between the past and present Aldabra scientific coordinators. The team steadily built momentum to the official anniversary day on 30th June.

[Watch now](#)



Past and present ASCs meet up for a virtual chat ©SIF

3.

The countdown also saw a live link-up on June 28th between SIF staff across its four sites to discuss the 50th anniversary.



4.

SBC hosted a roundtable discussion on the 50th anniversary entitled Aldabra 50 An Konservasyon Ek Resers (Aldabra 50 years of Conservation and Research) featuring people who have been dedicated to ensuring the station's running as from SIF's creation.

[Watch now](#)



5.

SIF teamed up with Raffles Seychelles for our first ever social media giveaway to celebrate our followers!

All photos ©SIF





6.

We hosted a series of weekly Instagram lives aiming to connect Aldabra to the wider public. Spanning over a month, the lives hosted various members of the SIF team so the public can directly ask questions to staff. With each question, our sponsors (MCB Seychelles, Cable & Wireless, H Savy Insurance, Sacos & Space 95) donated towards the Aldabra Eco-School Trip. In total, this initiative raised SCR 91,000.

[Live Session 1](#)[Live Session 2](#)[Live Session 3](#)[Live Session 4](#)

7.

During October, SIF held an Aldabra research station 50th anniversary-inspired treasure hunt! The activity saw seven teams of four competing by foot and brains to solve a series of clues that took them on an adventure through Victoria.

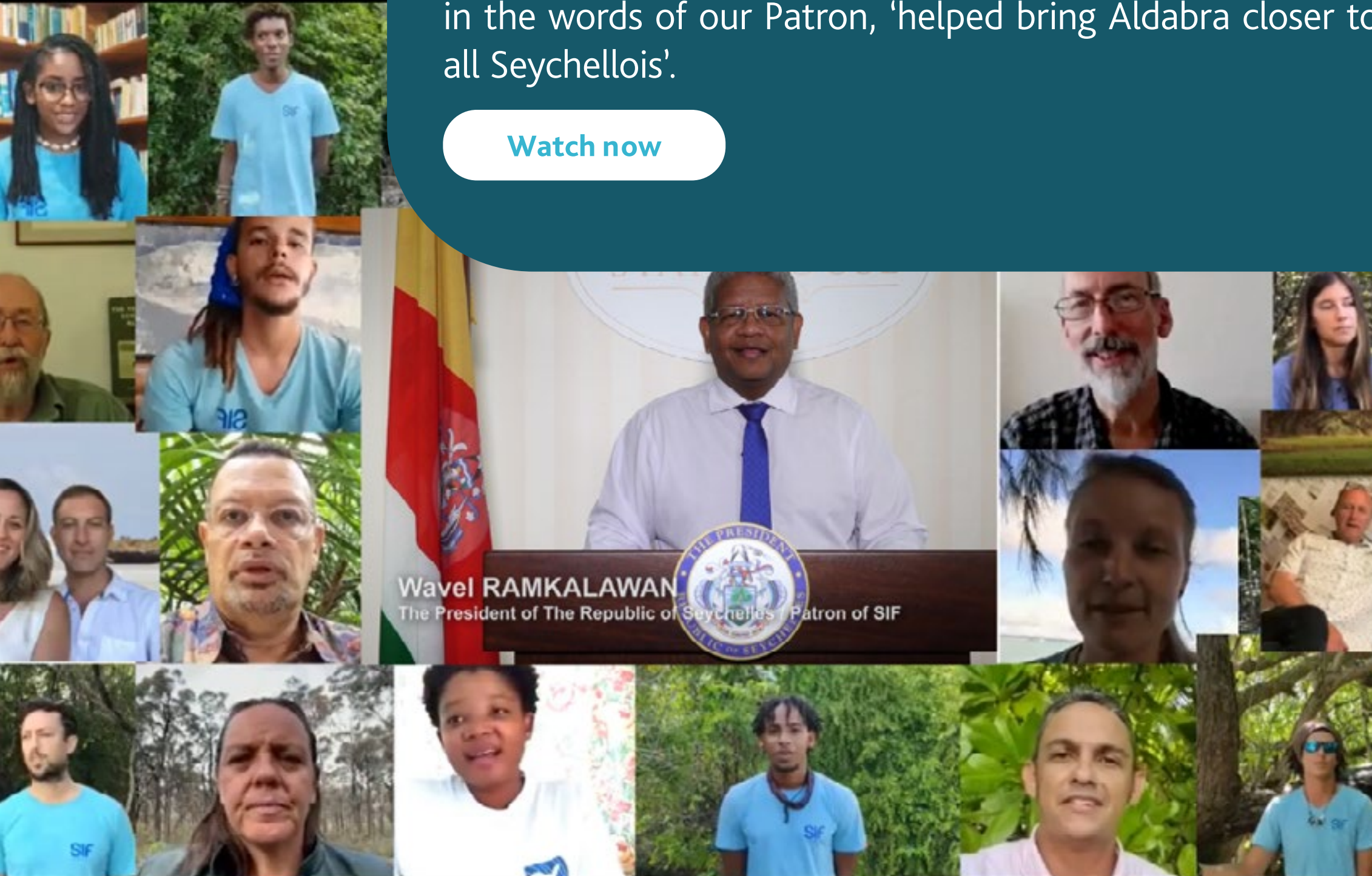


The participants of the treasure hunt eagerly arrived at SIF's Head Office ©SIF

8.

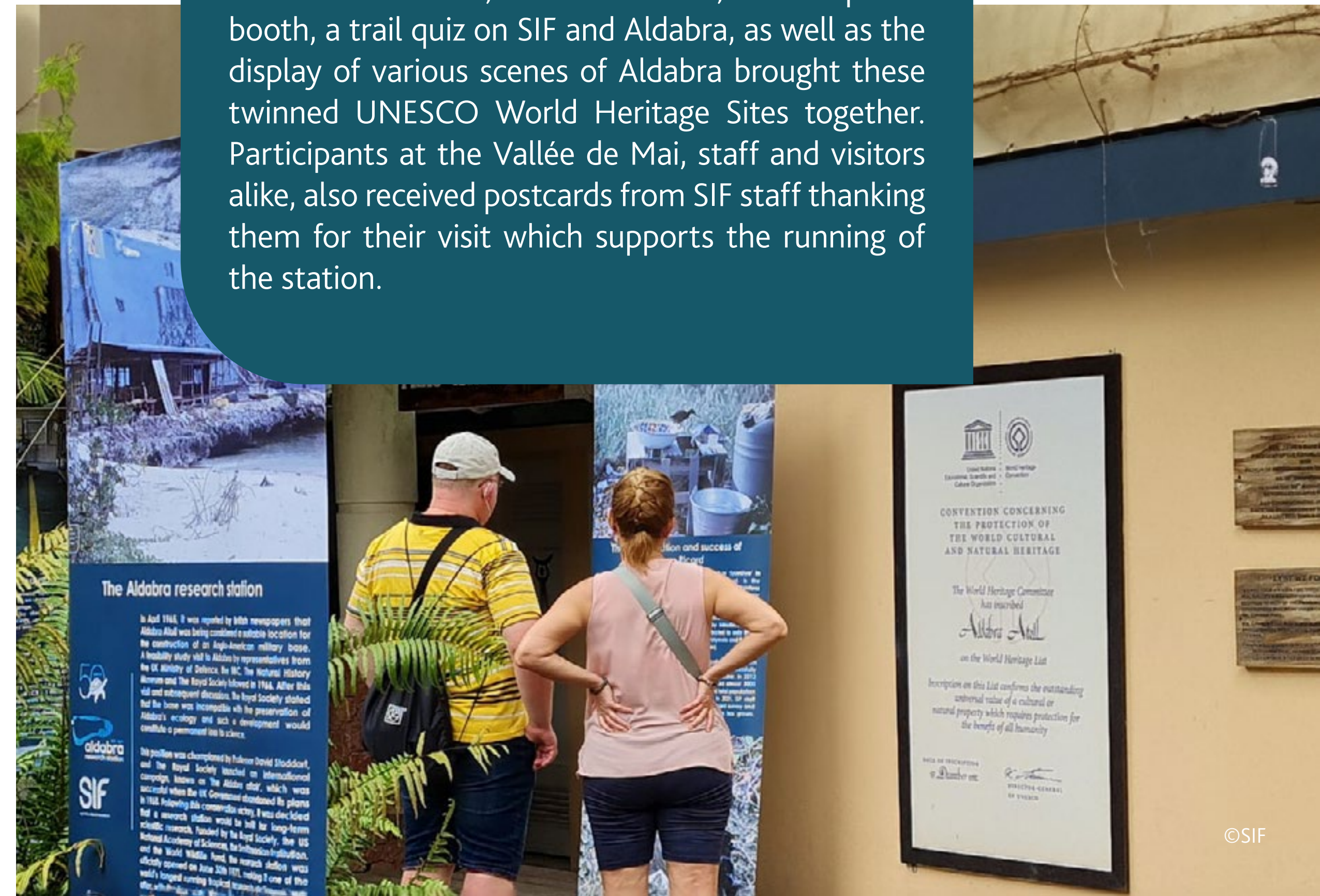
On the day itself, several special events took place. In the morning a short video message by SIF's Patron, President Wavel Ramkalawan, was released on social media and later broadcasted on national television. This video, the first in a series of short videos from those who have been lucky enough to visit and support Aldabra, was extremely appreciated and in the words of our Patron, 'helped bring Aldabra closer to all Seychellois'.

[Watch now](#)



9.

At the Vallée de Mai, various activities, such as a photo booth, a trail quiz on SIF and Aldabra, as well as the display of various scenes of Aldabra brought these twinned UNESCO World Heritage Sites together. Participants at the Vallée de Mai, staff and visitors alike, also received postcards from SIF staff thanking them for their visit which supports the running of the station.



10.

A travelling photo exhibition was launched to showcase changes in research and logistics over the last half-century displayed at places with high foot traffic on Mahé in December. The travelling banners then made their way to Vallée de Mai's Visitor Centre, Fond Ferdinand and the La Digue Jetty.



©SIF

11.

A new celebratory logo was developed for the occasion and depicts Aldabra Atoll; the 'dot' denotes the position of the research station on Picard Island and from left to right, the gradual thickening of the vertical lines creates a ripple effect emanating from the station. This indicates growth, progress, advancement and evolution, the impact of the research station being felt in Seychelles and beyond. The anniversary emblem showcases the Aldabra giant tortoise, the atoll's most iconic endemic species.





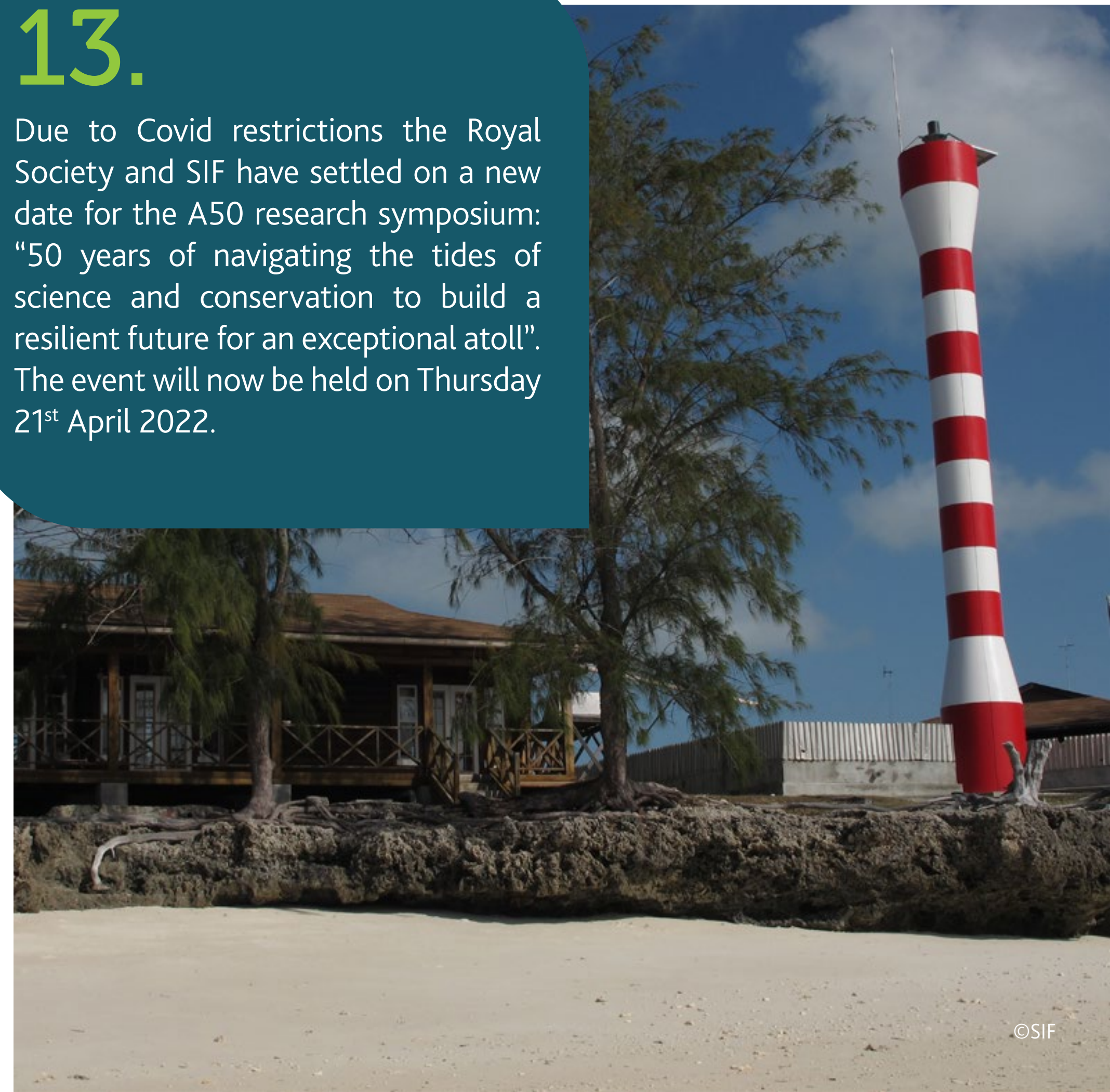
12.

The branding was further expanded to a series of limited-edition merchandise to celebrate the milestone, featuring the iconic Aldabra colours. This limited series has been available for purchase at all of SIF's retail outlets.

©State House

13.

Due to Covid restrictions the Royal Society and SIF have settled on a new date for the A50 research symposium: "50 years of navigating the tides of science and conservation to build a resilient future for an exceptional atoll". The event will now be held on Thursday 21st April 2022.



©SIF

14.

A new synthesis paper is being developed to summarise all the research that has been conducted from Aldabra over the past 50 years. The paper is being led by Dr Nancy Bunbury, but is a huge team effort from staff past and present.



A Royal Society researcher taking rainfall measurements ©Stephen Blackmore

15.

The current Aldabra team organised the burial of a time capsule on at La Gigi. They created personalised gifts and wrote letters addressed to the future. These were then sealed up and buried next to the UNESCO World Heritage Site plaque. This time capsule will be opened in the year 2071, when the research station celebrates its 100th year anniversary.



An SIF staff burying the time-capsule on Aldabra ©SIF

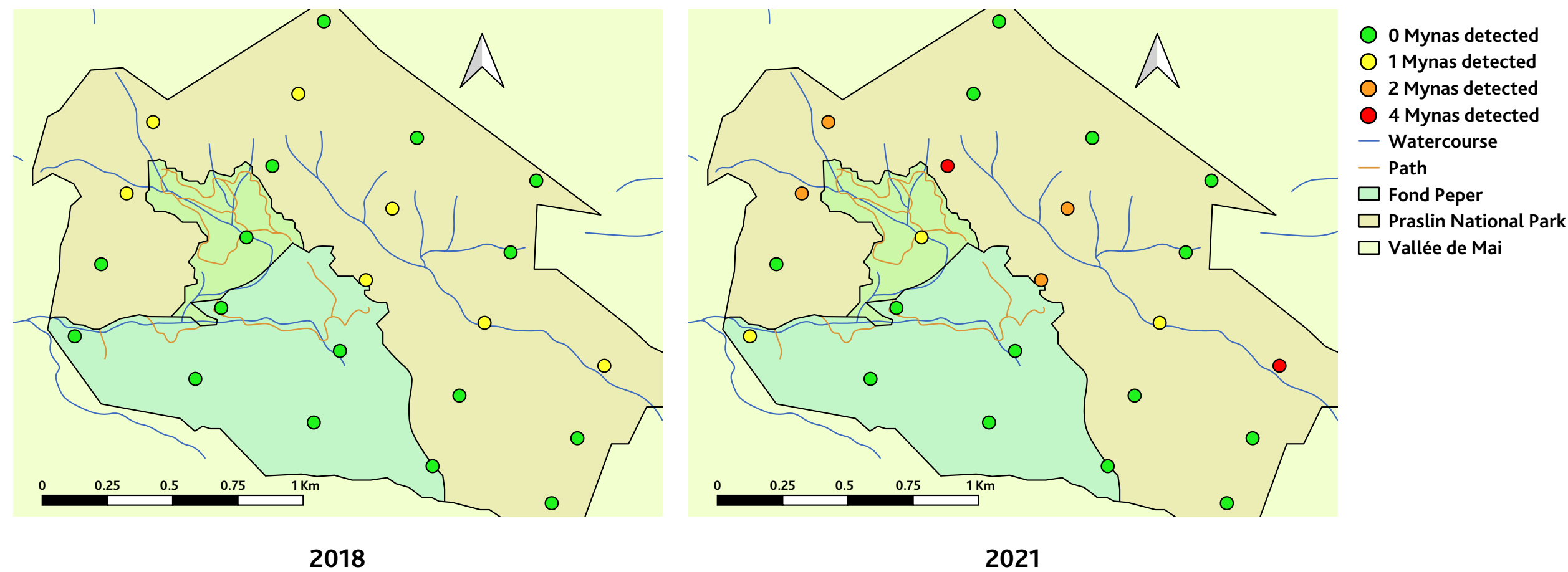
5

Vallée de Mai

5.1 Science and Conservation

Concerns over myna increases

This year we conducted a survey of common mynas and found that the number of mynas detected at each survey point has increased. The continued growth in the myna population will increase pressure on native wildlife, specifically the black parrot, as these birds compete for nest space and food, as well as predating on other species' eggs and chicks. SIF will continue to monitor the population and decide if further action is required.



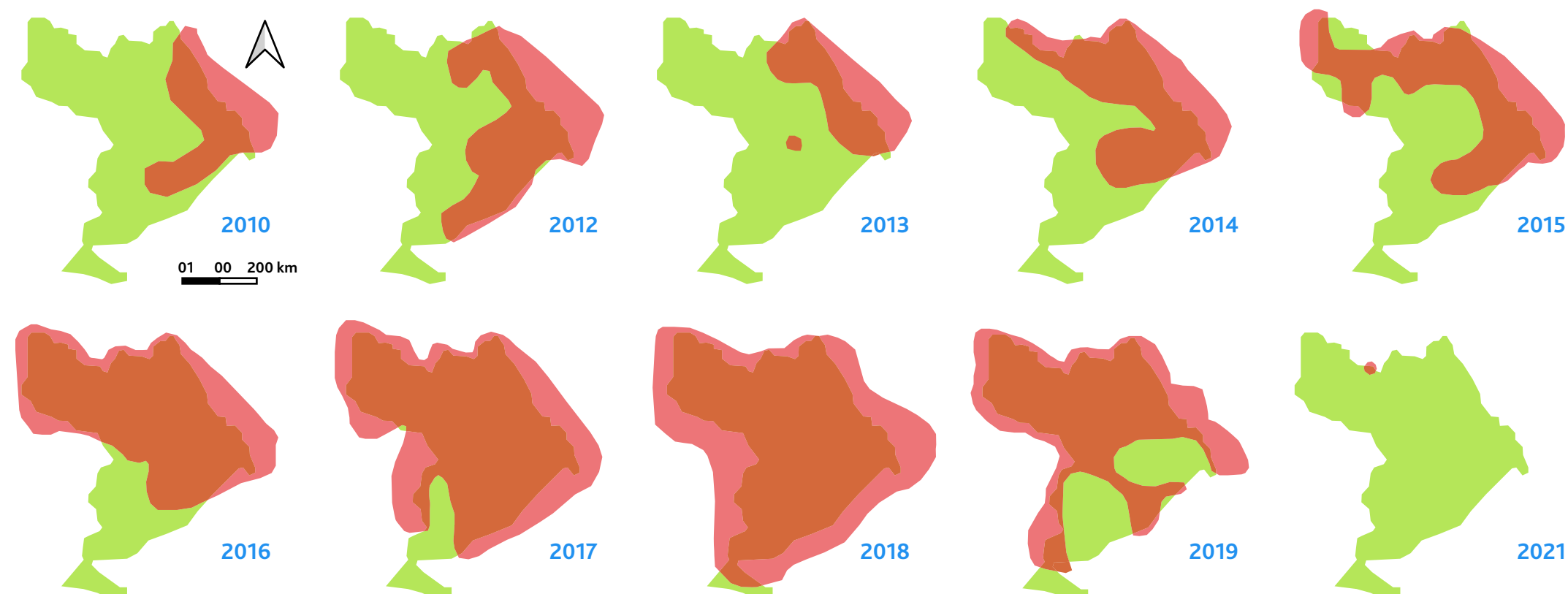
All 23 myna survey points in the national park with the number of mynas detected in 2018 and 2021. No more than one individual detected at each survey point in 2018. Up to four individuals detected at each survey point in 2021 ©SIF



The common myna, commonly known as 'Marten' in Creole, is a well-known invasive species around the world ©SIF

Yellow crazy ant control continues

The UNESCO World Heritage Centre funded project “Minimising impacts of the invasive yellow crazy ants at the Vallée de Mai UNESCO World Heritage Site to preserve its outstanding universal values” has achieved an incredible milestone by reducing the distribution of highly invasive yellow crazy ants (YCA) across Vallée de Mai from 100% to 0%! Monitoring so far indicates potential recovery of native fauna but long-term control of YCA will require continuation of baiting of the buffer zone and Fond Peper to ensure the ongoing success. The team, led by Jessica Constance, have worked tirelessly to achieve these results despite setbacks due to COVID-19 restrictions and weather disruptions.



Distribution (in red) of yellow crazy ants in the Vallée de Mai from 2010 to 2020 ©SIF



A small but mighty baiting team poses for a commemorative photo ©SIF

Black parrot team report high nest failure rates

The black parrot team were saddened to record unusually high failure rate in black parrot nests this season. Nest failures were thought to be caused by predation of eggs by rats and possibly common mynas, as well as unknown embryo death (where a developing embryo dies in the egg before hatching), egg infertility, nest base collapse and chicks dying during the severe storms of mid-February.



The left photo shows an infertile egg and the right one is of a fertilised egg where the embryo died during development ©SIF

The return of the endemic white slug

Following the intensive yellow crazy ant control efforts over the last two years the Vallée de Mai research team were delighted to record an increase in the number of white slugs (*Vaginula seychellensis*) and greyslugs (*V. voeltzkowi*) throughout the forest. The results provide the strongest indicator yet that our yellow crazy ant control efforts are having positive impacts on the palm forest fauna.

An increase in sightings of endemic white slugs is a positive sign for the Vallée de Mai's efforts to control yellow crazy ants ©SIF

Seychelles tiger chameleon and the giant bronze gecko protection

Since 2018 there have been increasing reports of giant bronze geckos being sold online and at reptile fairs. In response, the Seychelles Cabinet of Ministers approved regulations that will protect both the Seychelles tiger chameleon (*Archaius tigris*) and the giant bronze gecko (*Ailuronyx trachygaster*). Several years of work, research, and communication by SIF and various national stakeholders, especially the Ministry of Agriculture, Climate Change and Environment, have gone into this national achievement. It is a first step towards the listing of these two precious species on the Convention on International Trade in Endangered Species of Wild Fauna and Flora (CITES).

The Seychelles tiger chameleon (*Archaius tigris*) ©Irma Dubois

The giant bronze gecko (*Ailuronyx trachygaster*) ©Dennis Hansen

German Commission for UNESCO #SOSAfricanHeritage project

SIF was successful in obtaining a short-term emergency financial and technical grant of €25,000 from the German Commission for UNESCO for the Vallée de Mai. The grant aided SIF's rapid response in communicating the Vallée de Mai's COVID-19 measures. Furthermore, the creation of short educational videos and the use of new surveillance equipment may have contributed to a decrease in poaching towards the end of 2020.

The Vallée de Mai experienced a 97% drop
in visitors since the start of COVID-19
©James Warwick



With the support of



Federal Foreign Office



United Nations
Educational, Scientific and
Cultural Organization

German Commission
for UNESCO

Franklinia Foundation Project

In July, the SIF project “Increasing the resilience of Seychelles’ flagship tree species coco de mer *Lodoicea maldivica*” was officially approved by the Franklinia Foundation. The two-year project started in November 2021 and aims to increase the resilience of the coco de mer by:



Supporting long-term
management and
conservation of
the species



Reducing the threat
of fire



Reducing the incidence
of illegal harvesting



Increasing community
engagement and
communication
to enhance the
understanding of the
coco de mer and its
importance

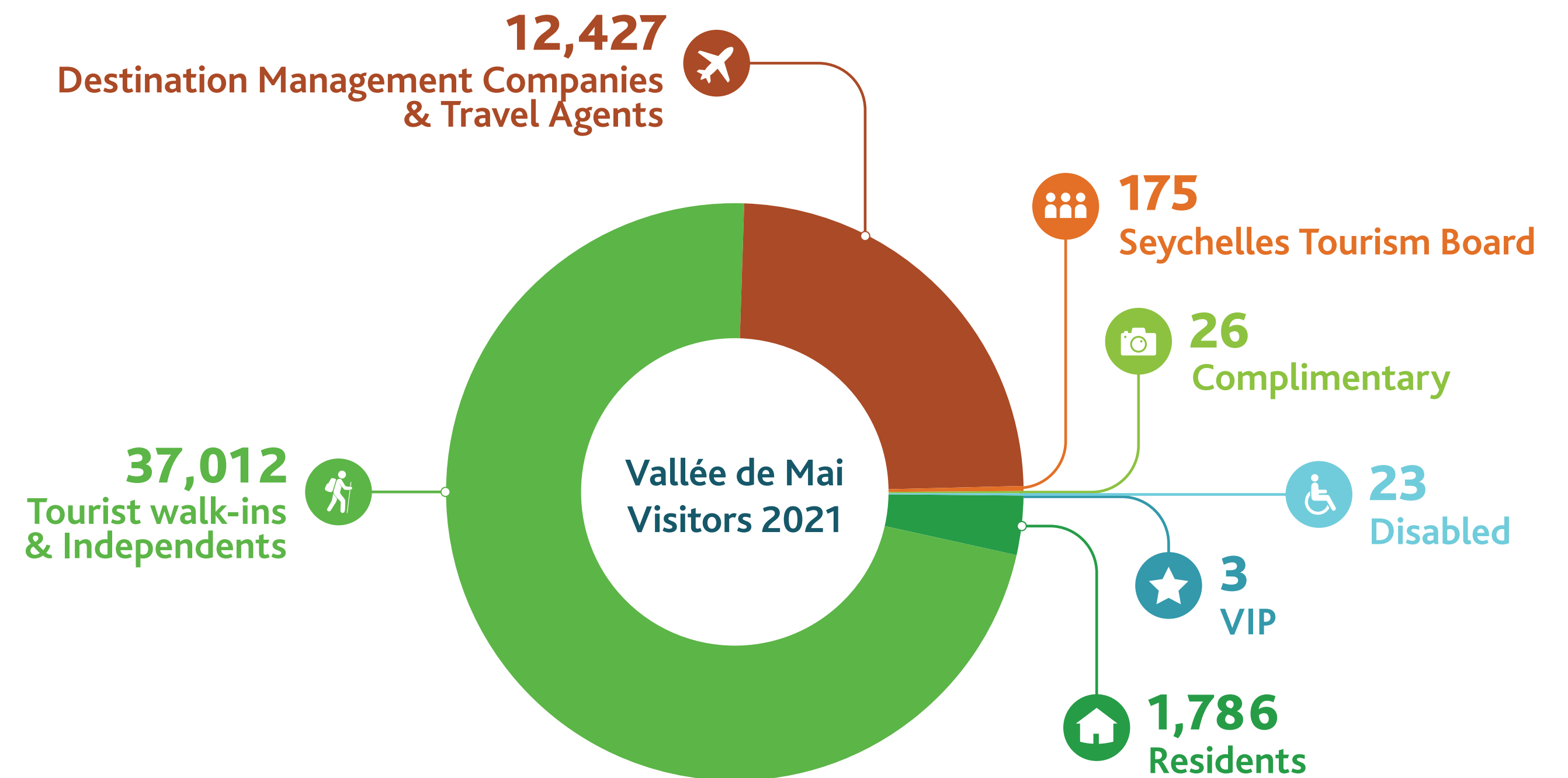
Project Officer, Veronique Banane, introducing the project to
Fond Ferdinand and Vallée de Mai Staff ©SIF



5.2 Site management and sustainable tourism

The Vallée de Mai welcomed 51,452 visitors in 2021, increasing the yearly visitors by 114%, more than double that of 2020. In comparison to the total number of visitors to Seychelles, a total of 27% chose to visit the Vallée de Mai, slowly increasing from the 18% of 2020.

We saw a decline of residents visiting the Vallée de Mai during this year. Where in 2020 we had 2,632 Seychelles residents, representing 11% of total visitors. In 2020, this number decreased to 1,786 residents, making up only 3% of the total visits. It is to note that majority of resident visits are usually facilitated through school trips, and due to health restrictions, it was not recommended to host groups.



VIP visits

On Friday, 24th September, the Minister of Foreign Affairs and Tourism, Mr. Sylvester Radegonde, visited the Vallée de Mai and chaired a meeting with various local and national stakeholders that focused on the need to ensure that visitors to Seychelles and specifically the Vallée de Mai are receiving an excellent service.





©SIF

Site repairs

Since February 2021, 393m of footpath and wooden footsteps have been constructed and repaired. Old electricity poles donated by the Public Utilities Corporation (PUC) were repurposed as maintenance materials.

Dr Frauke Fleischer-Dogley with newly-renovated paths ©SIF



©SIF

Kokosye Café Reopens to Visitors

After a whole year of not being operational due to the COVID-19 pandemic, the Kokosye Café at the Vallée de Mai Visitor Centre finally reopened its doors on 27th September, coinciding with World Tourism Day. We are very happy to share that 90% of the Kokosye café's suppliers are Praslin-based businesses and to improve our sustainability and efficiency, we are now offering a variety of ready-to-go food and drinks in environmentally friendly packaging.



©Sebastian Mühlig



©Sebastian Mühlig

Festival Kreol

This year, the Vallée de Mai and Fond Ferdinand celebrated the Creole Festival via a week-long campaign of themed activities. Visitors had the chance to taste some of Seychelles' local snacks, with the coconut nougat being most popular treat among visitors.

Sega and Moutya are never missed at Vallée de Mai's Festival Kreol ©SIF



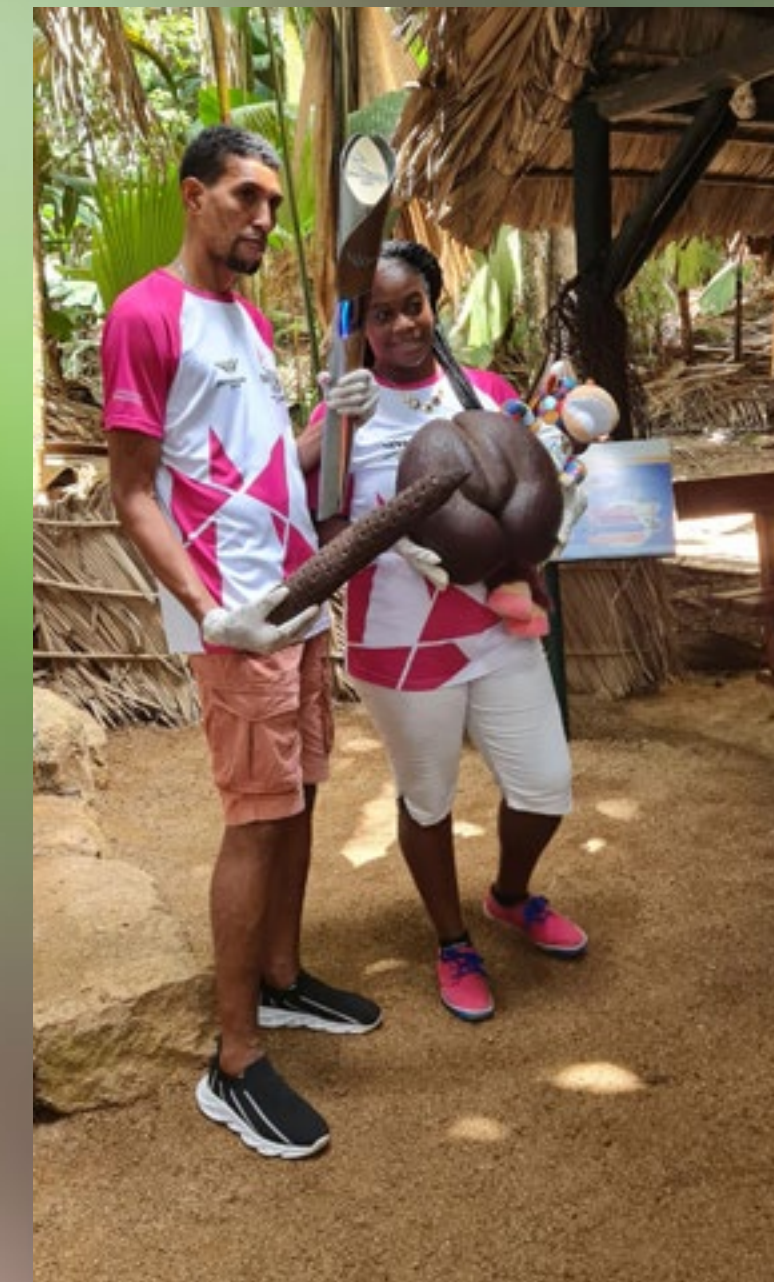
Vallée de Mai and Fond Ferdinand staff enjoying a creole feast ©SIF



Queen's Baton Relay

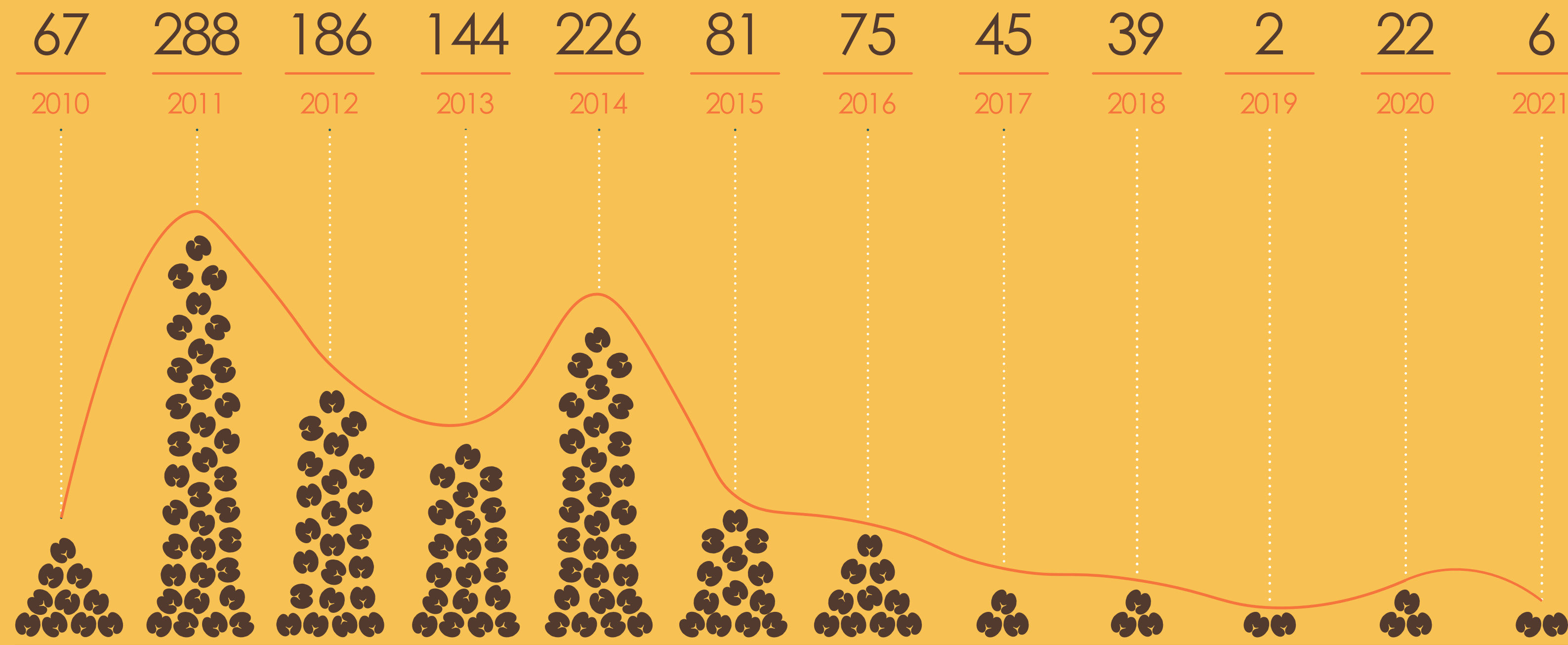
The Queen's Baton Relay – which is a relay around the world held prior to the beginning of the Commonwealth Games – arrived in Seychelles on 22nd December. The relay toured the Vallée de Mai carried by our Education and Outreach Officer, Maria Brioche and Assistant Field Research Officer, Terance Payet, after entering the site serenaded by local music and dance in the Visitor Centre.

Terance and Maria in a souvenir photo ©SIF



Coco de Mer Stats

In 2021, we sold 185 coco de mer as souvenirs. Following the full reopening of the Visitor Centre operations, the incidence of poaching significantly decreased, with only one reported case throughout the year. This incident occurred in January, when six coco de mer nuts were found missing from the forest floor, five of which were germinating and one still in the nut stage.



6

Aldabra Atoll



6.1 Science and Conservation

Rediscovery of a second population of the Aldabra banded snail

In early July the Aldabra team undertook a short expedition to search for the Aldabra banded snail (*Rhachistia aldabrae*) in the Coroupa region of south-west Grande Terre (the largest island of Aldabra) which has proved successful!

This snail was declared extinct in 2007 (Gerlach, 2007) but rediscovered in August 2014 by SIF staff member Shane Brice, on Malabar Island. The team were delighted to find the snail is present on Grande Terre and will continue to investigate its distribution.



Jude Brice, Island Manager, upon rediscovering the Aldabra banded snail ©Jude Brice



Climate Vulnerability Index – CVI

SIF secured a grant from the Rosa Luxemburg Stiftung for a project entitled “Climate vulnerability assessment and justice for Aldabra”. Under this project we will carry out a climate vulnerability index (CVI) assessment to outline steps on protecting its Outstanding Universal Value from climate change. SIF will communicate the outcomes of the CVI, highlighting the threats and losses to Aldabra, caused by the climate crisis as well as initiate data-sharing for research to inform climate policy and action.



**ROSA
LUXEMBURG
STIFTUNG**



Highest green turtle tracks

March 2021 was a record-breaking month on Aldabra, with the highest ever number of green turtles emerging on Settlement Beach to nest since records began! In total the research team counted 1,516 tracks; incredibly that means an average of 50 turtles a night were coming ashore!



©SIF

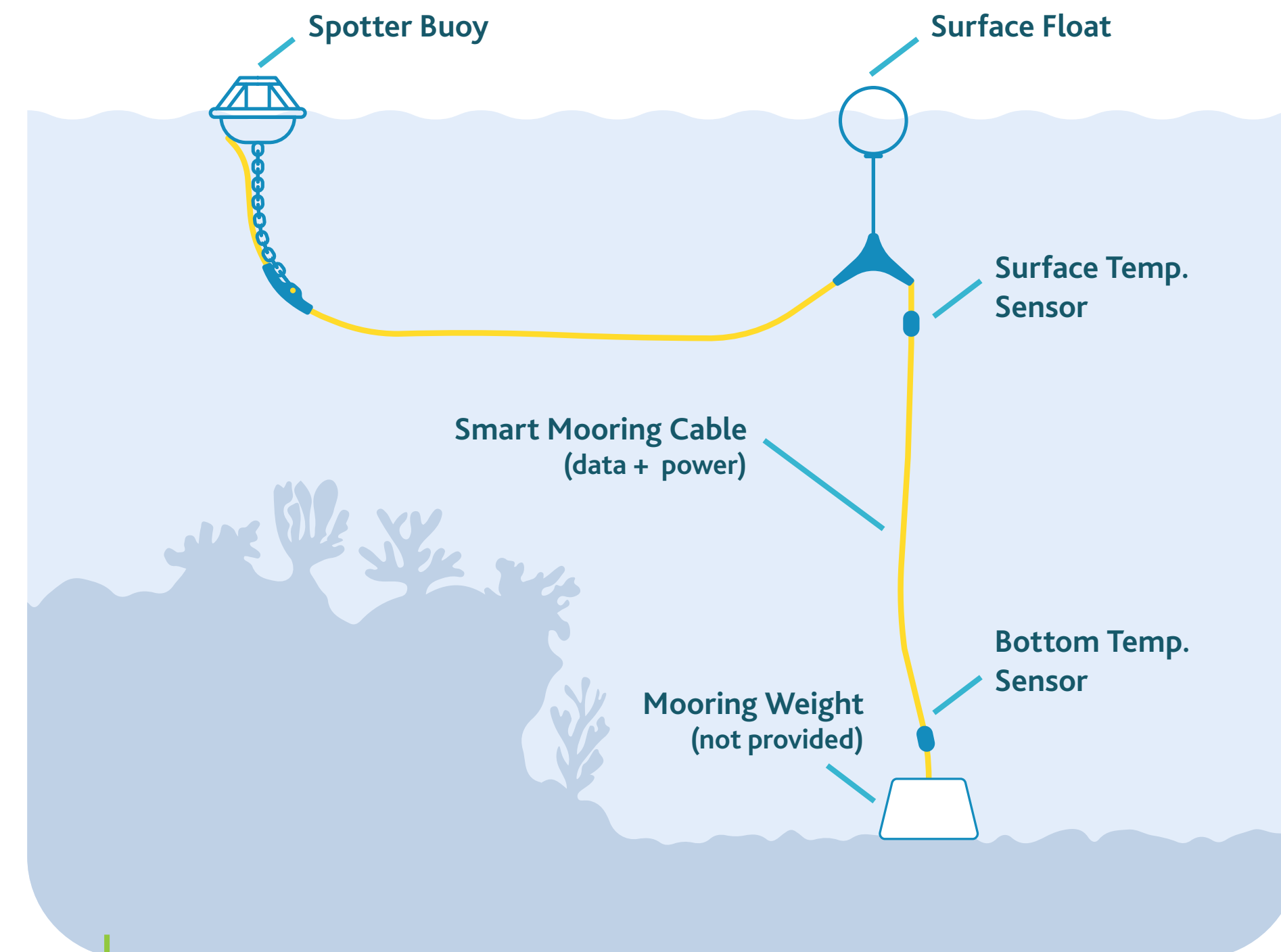


©Rich Baxter



Smart data buoy installed

The Sofar Ocean Spotter buoy, donated to SIF by Aqualink arrived in April. The spotter buoy will conduct real-time measurements of the water temperature at the surface, but also at the seafloor.



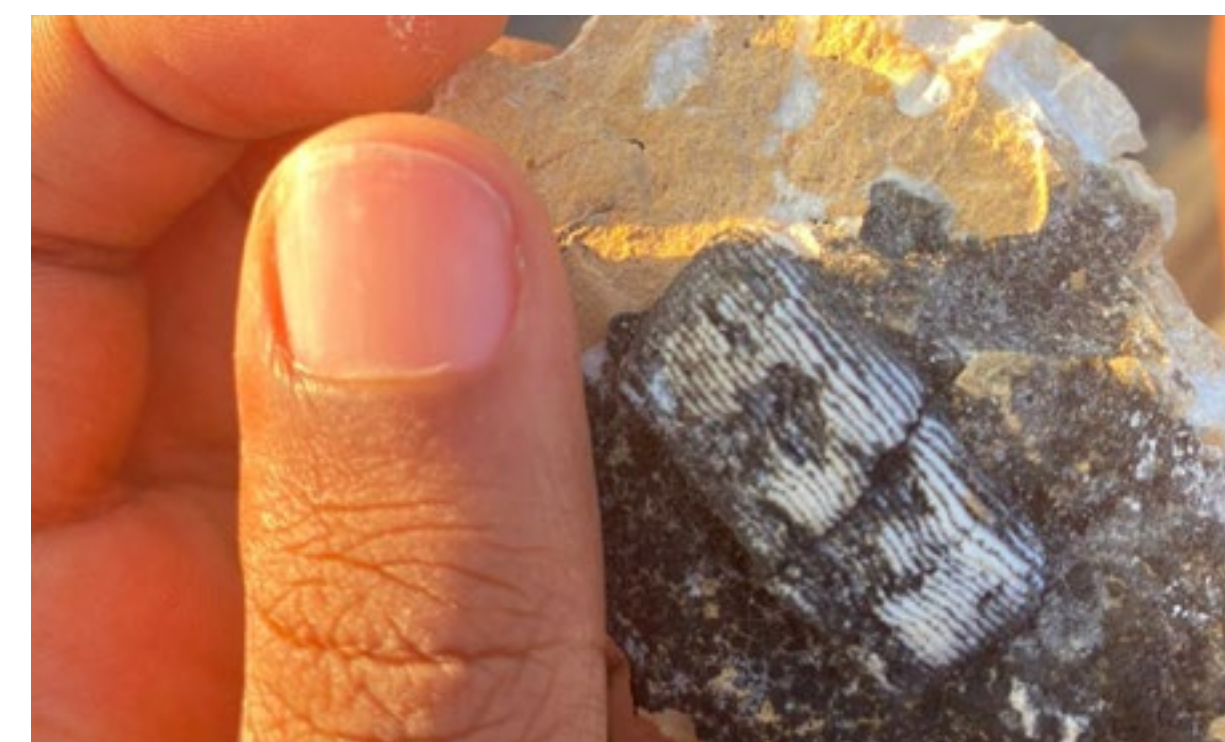
Schematic of the buoy set-up ©Aqualink

Paleo Expedition

In November, six researchers from various European institutions arrived on Aldabra for a long-planned expedition to uncover evidence of past species on and around the atoll. Despite a year-long delay and near cancellation due to the COVID-19 pandemic, the expedition proceeded with perseverance and last-minute funding. Led by Dr Dennis Hansen and Dr Torsten Scheyer from the University of Zurich, the team revisited historical sites on Picard Island and explored new promising locations on Eastern Grande Terre. The discovery of large crocodile and tortoise bones in 2015, initially found by Dr Hansen, highlighted the potential for significant findings in the future.

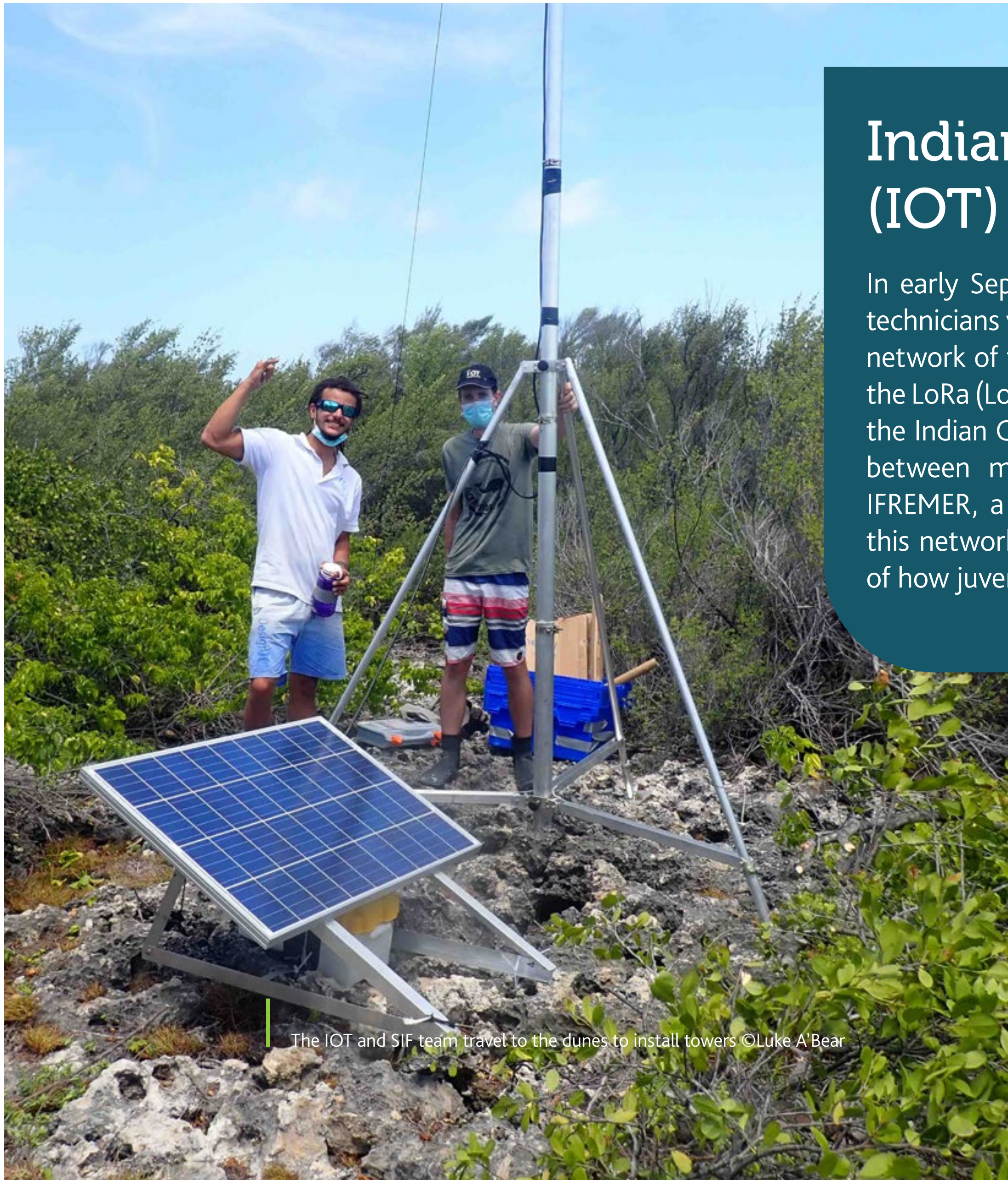


Dr Scheyer extracting a fossil! ©Dr Dennis Hansen



Indian Ocean Sea Turtle (IOT) project

In early September, a group of French researchers and technicians visited Aldabra for three days to help install a network of towers across the atoll to track turtles using the LoRa (Long Range) network. This installation is part of the Indian Ocean Sea Turtle (IOT) project, a partnership between multiple organisations and is managed by IFREMER, a French oceanic research institute. Through this network we will gain a much better understanding of how juvenile turtles utilise Aldabra's huge lagoon.



The IOT and SIF team travel to the dunes to install towers ©Luke A'Bear



Luke A'Bear, Aldabra Science Coordinator, releasing a tagged turtle into the sea ©SIF

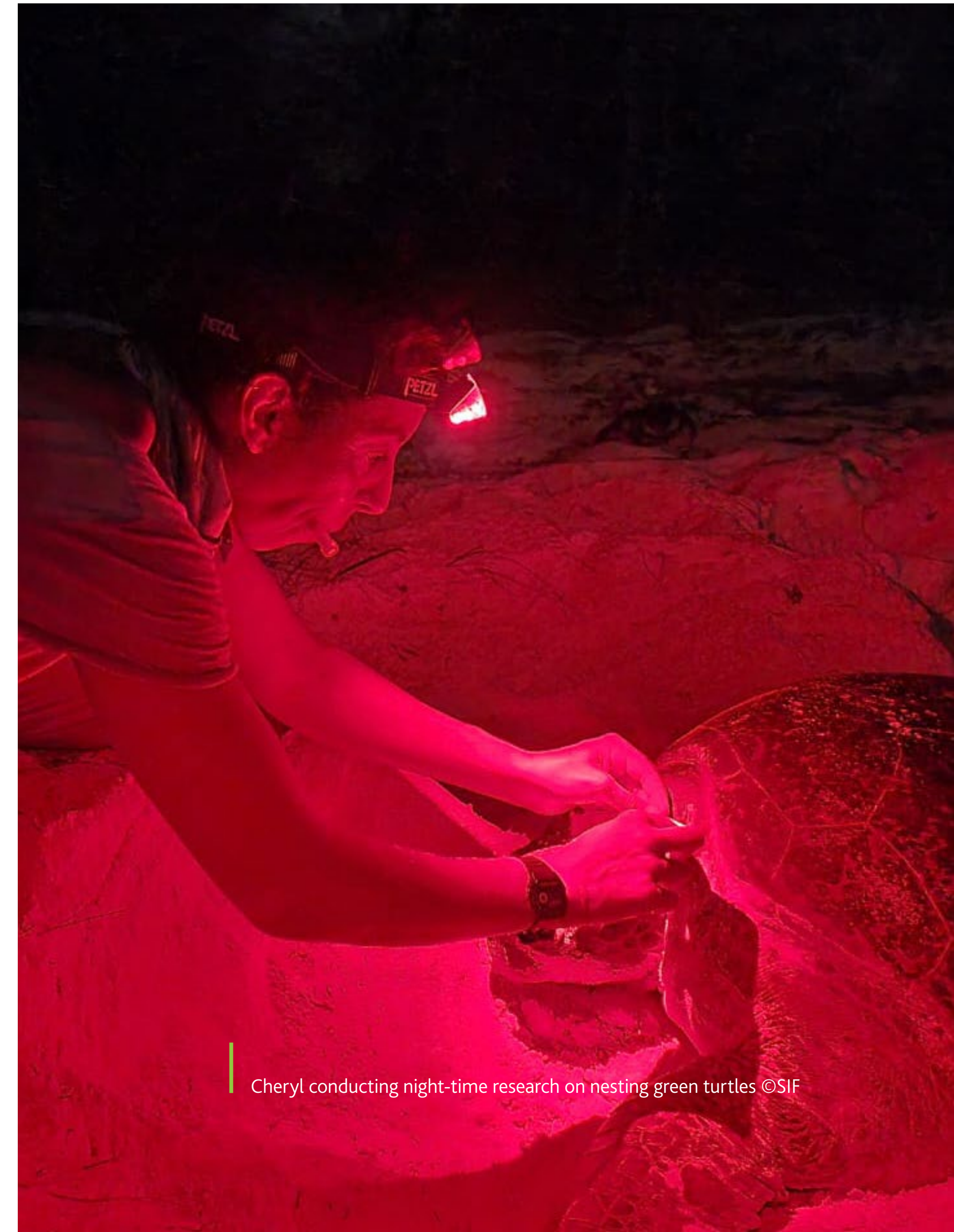
New turtle research

Former Aldabra Science Coordinator and visiting researcher, Cheryl Sanchez, is currently undertaking her PhD research using Aldabra as a model system to study the ecology and distribution of marine megafauna, in particular, Endangered green turtles (*Chelonia mydas*) and Critically Endangered hawksbill turtles (*Eretmochelys imbricata*).

Cheryl's research will assess important population demographics and dietary information for turtles that utilise Aldabra's lagoon, which are needed for their conservation assessment and management.



Cheryl conducting a habitat survey ©SIF



Cheryl conducting night-time research on nesting green turtles ©SIF



Aldabra's first biosecurity ant monitoring

Aldabra currently has no invasive ant species but to help detect early incursions, SIF has implemented a new ant monitoring programme. Conducting this monitoring regularly, especially before and after supply boats will help to ensure that Aldabra stays free of invasive ants like the highly invasive yellow crazy ant, by ensuring early detection and effective preparation for a rapid response.

The team conducting jamming on Aldabra ©Luke A'Bear

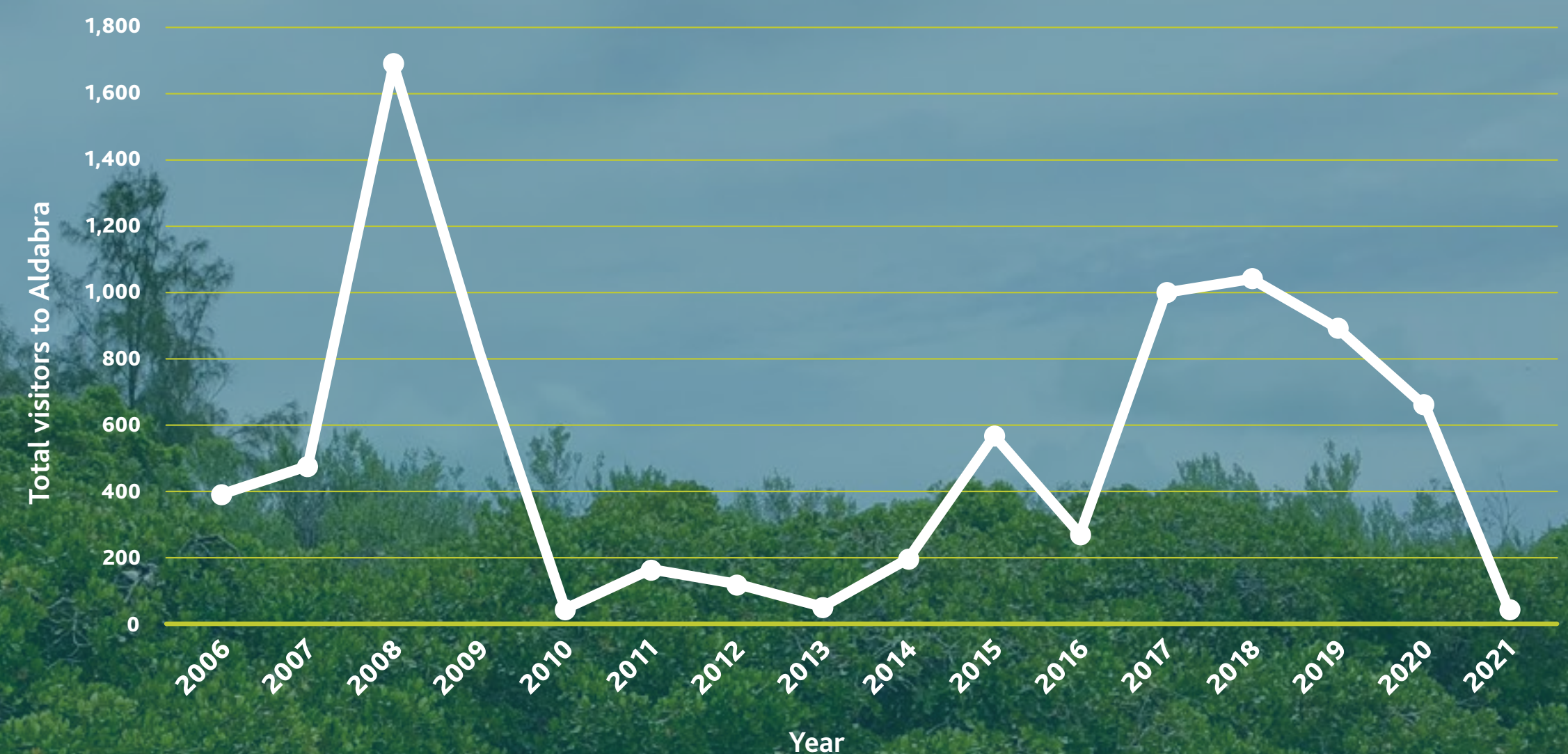


Luckily, invasive ants were not detected this time around ©Luke A'Bear

6.2 Island management and sustainable tourism

Visitor numbers remained low in 2021 as a result of the COVID-19 pandemic.

As a result of the COVID-19 pandemic, vessels ceased their visits to Aldabra, significantly impacting tourism and the local economy. The remote atoll, renowned for its unique biodiversity and pristine environment, saw a drastic reduction in the number of visitors. This hiatus, while challenging, offered a rare period of recovery for the ecosystem, allowing wildlife to thrive without human disturbance. However, the financial implications for conservation efforts were substantial, as tourism revenues play a crucial role in funding these initiatives. The Seychelles Islands Foundation, had to adapt quickly, seeking alternative funding sources and adjusting their conservation strategies to ensure the continued protection of this UNESCO World Heritage Site. The absence of tourists underscored the delicate balance between preserving natural heritage and sustaining eco-tourism, highlighting the need for resilient, adaptable conservation models in the face of global crises.





Champlain visits the atoll

The Champlain, a French Navy vessel, briefly visited the atoll in September. The crew were transporting a group of IFREMER scientists from the Indian Ocean Sea Turtles group, and assisted them and the Aldabra team in setting up three receiving stations on Aldabra as part of the Western Indian Ocean's first observation network for turtle movements.

Alongside the additional help, the Champlain also brought fresh supplies and a morale boost!



Presidential visit & delegation

From the 9th to 10th April the Aldabra research station hosted the President of the Republic of Seychelles and SIF Patron, Wavel Ramkalawan and his delegation as a gesture of gratitude for the international support provided to Seychelles throughout the COVID-19 pandemic. The delegation was able to experience some of Aldabra's much sought-after natural wonders, snorkelling through the atoll's main channel, taking lagoon cruises, as well as touring the station and old settlement, and experiencing the "land of the giants" on the island of Picard.



SIF CEO welcomes the Seychelles President and SIF Patron to Aldabra with the Minister of Tourism and Foreign Affairs ©Martin van Rooyen





"I would like to express my sincere appreciation to the SIF team for the invaluable work you are all doing under the guidance of Dr Dogley. As Government we are here to support your efforts and remain committed to ensuring Aldabra and all other parts of our territory that are under conservation are protected"

H.E. Wavel Ramkalawan, SIF Patron

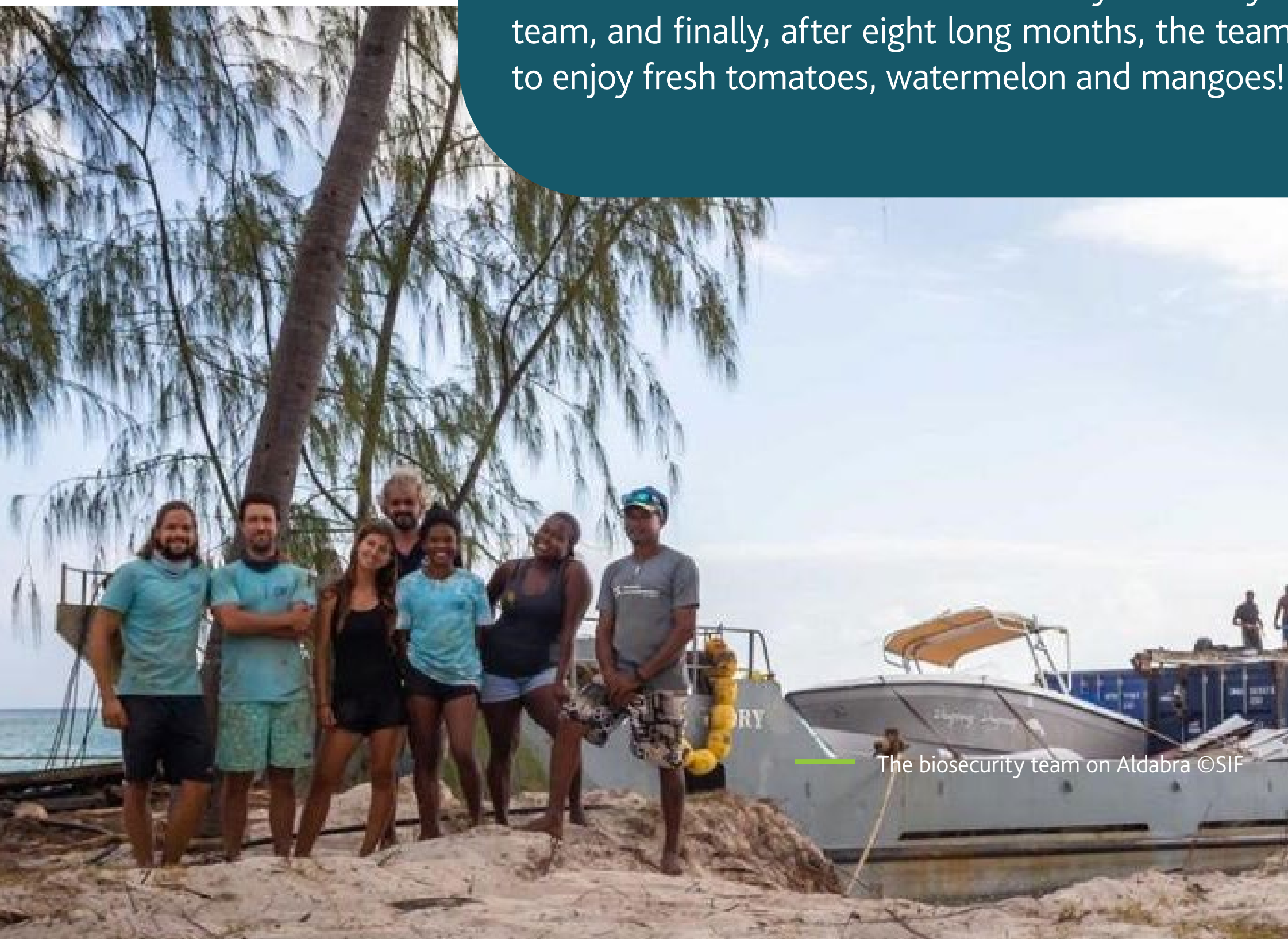
Supply boat & biosecurity

In 2020, SIF was awarded a small technical grant (€100,000) under the Biodiversity and Protected Area Management Programme (BIOPAMA) to strengthen and fully institutionalize biosecurity management as per the Aldabra Atoll Management Plan 2016–2026.

The project has been getting underway to improve biosecurity and quarantine measures, to finalise and implement surveillance and emergency incursion response protocols, and to build capacity to institutionalise biosecurity standards across SIF and share capacity within Seychelles.

BIOPAMA
From Knowledge to Action for a Protected Planet

The new biosecurity equipment, including drybags and pest-proof containers, that were purchased under the project arrived on Mahé. This allowed the team to implement new and strict biosecurity measures for the Aldabra supply chain. Once La Digue Glory beached on Aldabra in early November, the supplies underwent another round of biosecurity checks by the Aldabra team, and finally, after eight long months, the team were able to enjoy fresh tomatoes, watermelon and mangoes!



The biosecurity team on Aldabra ©SIF



Fresh supplies awaiting individual biosecurity checks at Head Office ©SIF

Aldabra Regatta

Our first Aldabra Regatta was held this year. The team was inspired by the Beau Vallon regatta, and wished to replicate it for a great cause – to raise awareness on the constant global issue of marine pollution. The event had such popularity it was covered in international news by The Guardian.

[Click for more](#)

All photos ©SIF



Dugongs spotted on Aldabra

The Aldabra team witnessed a herd of 10 dugongs surfacing in the lagoon! A very rare sighting to see so many together. Little is known about Aldabra's dugong population but a baseline population survey is planned to start in 2022 and this sighting has given the team a huge boost of excitement to investigate more about this species.



August hammerhead aggregation

The Aldabra team were privileged, once again, to witness an aggregation of scalloped hammerhead sharks swimming past the research station in August. The sighting consisted of four separate smaller groups swimming past at roughly 30-minute intervals, with the smallest group consisting of at least four individuals and the most around 12. This repeat sighting of hammerhead aggregations in August suggests Aldabra is potentially an important breeding site for this species.

Pied Kingfisher

In June, we had a very special new visitor to the atoll; a pied kingfisher (Ceryle rudis). This was the first time this species had been recorded on Aldabra and the whole of Seychelles.



7

Fond Ferdinand



7.1 Science and Conservation

Coco de mer census

The Fond Ferdinand team was joined by the Vallée de Mai research team to conduct Fond Ferdinand's periodic coco de mer census survey. With 122 hectares to cover, the team set up a grid reference system, this will be useful for the census but also for implementing other monitoring programmes such as the yellow crazy ant survey. The exploring allowed the team to discover sites and viewpoints that may prove ideal tourist attractions.



In conducting the coco de mer survey the team come across areas with rough terrain as well as potential tourist attractions ©SIF

Coco de mer regeneration training

A team of five personnel from Fond Ferdinand received introductory training on how to collect data on coco de mer regeneration. Vallée de Mai Ranger, Lee-Roy Estrale facilitated the training which involved the identification and measurement of various coco de mer development stages, from nuts to seedlings. The participants described their experience as very fruitful, providing an eye-opening perspective on the importance of data collection, particularly for one of Seychelles' flagship species.



Effective monitoring requires well trained teams, rangers have been excited to start putting their training into practice ©Nigel Valmont

Fond Ferdinand installs its first automatic weather station

Fond Ferdinand joins Aldabra and Vallée de Mai in having an automatic weather station (AWS) which will assist SIF and Seychelles Meteorological Authority (SMA) collect more data on Praslin's climate. SIF is grateful for SMA's continuous support and look forward to the finalisation of the partnership and data collection in 2022.

Fond Ferdinand's newly installed automatic weather station is currently in a trial phase
©Marc Jean-Baptiste

©Corianna Julie

7.2 Site Management and Sustainable Tourism

Fond Ferdinand survey presented to Minister on his visit to the reserve

During a visit to Fond Ferdinand by Minister Flavien Joubert the CEO presented the results of a community survey carried out shortly after SIF assumed the responsibility of the reserve in September 2020. Key survey objectives were to record the Praslin community's views and concerns about SIF taking on the responsibility of Fond Ferdinand, and to capture their ideas of what the future could hold for this reserve. When asked "Are you concerned that SIF will be responsible for Fond Ferdinand?" 45% answered yes. However, the overwhelming majority of respondents also provided positive statements that elaborated on their answer. Several such statements can be seen in the graphic on the right.



Visitor Decline

During the first quarter of 2021, Fond Ferdinand experienced a dramatic decline in visitors due to the COVID-19 pandemic. However, since the reopening of Seychelles' borders at the end of March, Fond Ferdinand received 200 visitors to the site in April and visitor numbers steadily increased over the following months.





Fond Ferdinand and Vallée de Mai team assembling for one of their operations as part of their four days of training ©PCU

Firefighting and first aid training

SIF was pleased to have members of its Fond Ferdinand and Vallée de Mai teams participate in a four-day training exercise run by the Government of Seychelles, to develop knowledge in forest firefighting tactics and equipment familiarisation.

In addition the Fond Ferdinand team undertook a three-day training course in First Aid. The team learned and trialled key life-saving techniques to cover the types of first aid that have been needed during past incidents. Fond Ferdinand now boasts a team made up of 77% First Aiders!

Our team learning and practising various first aid techniques ©SIF



Fond Ferdinand attains 97% staff retention after completing the first employment contract.



Since the reopening of Seychelles' borders at the end of March, Fond Ferdinand visitor numbers have steadily increased.

8 SIF Launches Sexual Harassment Policy

In April, SIF launched a sexual harassment survey across all four sites. The survey results were an eye-opening insight into staff perceptions and experiences of sexual harassment in the workplace. Accordingly, SIF's sexual harassment policy was finalised and launched alongside the new employee handbook in May. The policy cements SIF's zero-tolerance approach to harassment, defines the many forms of sexual harassment and abuse, outlines steps for victims to take, and provides support and legal information. Building on this work, mid-November saw SIF's designated sexual harassment contacts meet to discuss UNICEF's prevention of sexual harassment and abuse of authority e-course.



The new SIF Sexual Harassment policy was launched at all sites: Vallée de Mai, Fond Ferdinand, Aldabra and Head Office ©SIF



Staff being briefed on the new sexual harassment policy at Fond Ferdinand ©SIF

9

Communications, Education and Outreach



9.1 Communications

Media Summary



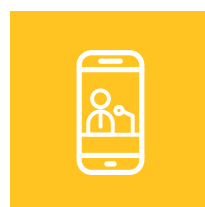
45 *Newspaper Articles*



25 *National Television & Radio features*



18 *International features*



13 *E-newsletter*



12 *Press release*

A comprehensive list of news items can be obtained upon request via email to info@sif.sc in line with the Seychelles Islands Foundation Communications Effectiveness Assessment (CEA 2021).

Social Media Analysis 2021

SIF social media platforms experienced significant growth in following and reach in 2021. SIF's Facebook following increased by 5%, with a 58% increase in YouTube subscribers in the same period.

SIF's reach on Facebook and Twitter increased by 461% and 94% respectively, these very positive results can be attributed to an across the board increase in content posting: 38% Facebook, 162% Instagram, 106% Twitter, 140% YouTube and the ability to dedicate significant time in working with sites and planning posts, made possible with having a Communications Officer (CO) dedicated to social media management.



221 Times posted

95,817

Accounts reached

Followers

9,988

Most viral post:
Wolf Snake eats Gecko

[Click here](#)



186 Times posted

90,485

Accounts reached

Followers

7,693

Most viral post:
Rail vs Crab

[Watch now](#)



183 Tweets posted

276,183

Accounts reached

Followers

1,585

Most viral post:
Shark Aggregation

[Click here](#)



36 Videos posted

13,078

Accounts reached

Subscribers

217

Most viral post:
The Coco de Mer

[Watch now](#)

Coco de mer gets international attention



SIF launched its planting coco de mer at home scheme in August 2020, and this year international newspaper, The Guardian, covered the scheme, allowing a global audience to become aware of this flagship species and SIF's efforts to conserve it.

[Read more](#)

Furthermore, SIF's CEO, Dr Frauke Fleischer-Dogley and Vallée de Mai Site Manager, Marc Jean-Baptiste, were interviewed by BBC World Service's Crowd Science show on "Why" are seeds such different sizes?

[Listen here](#)

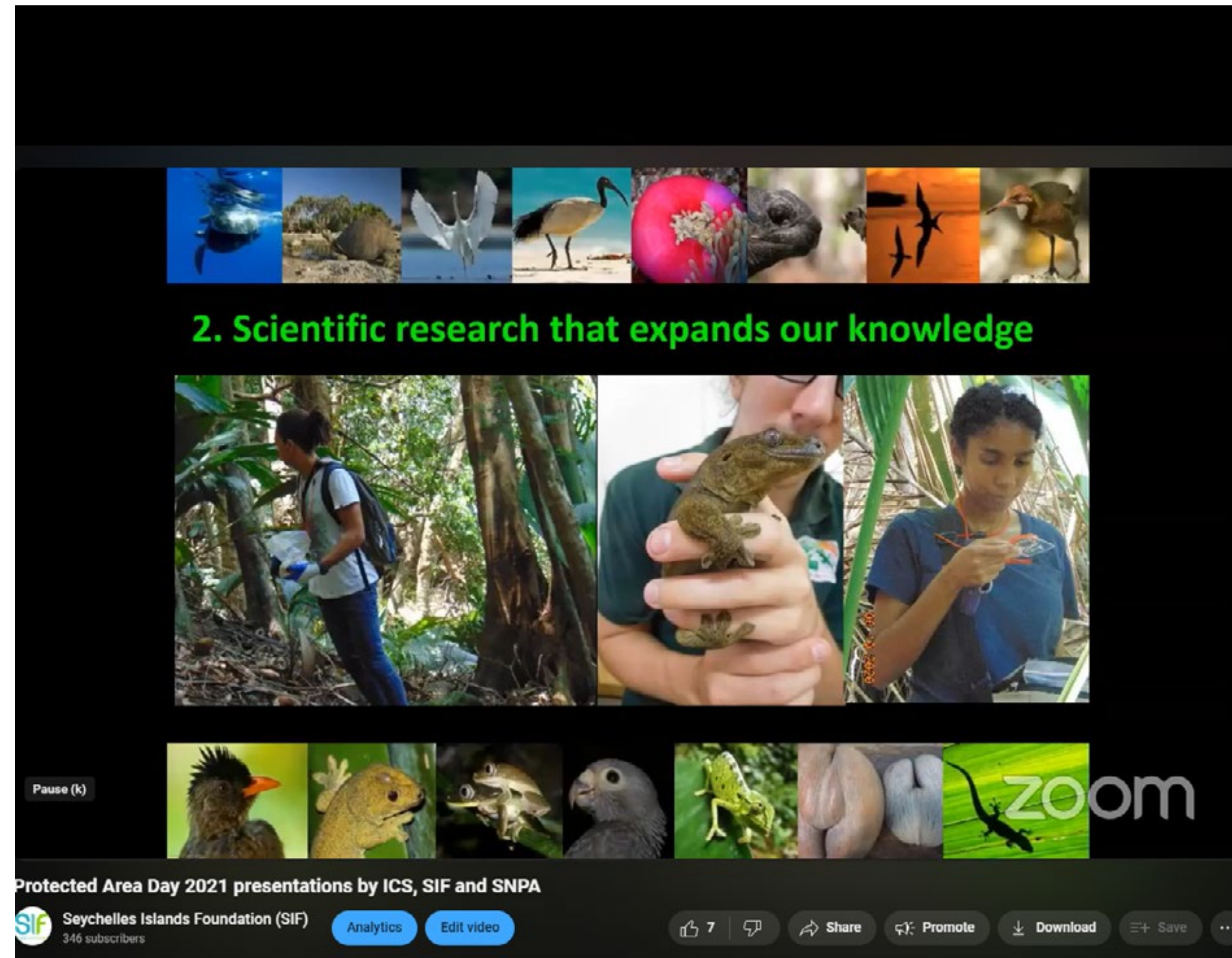
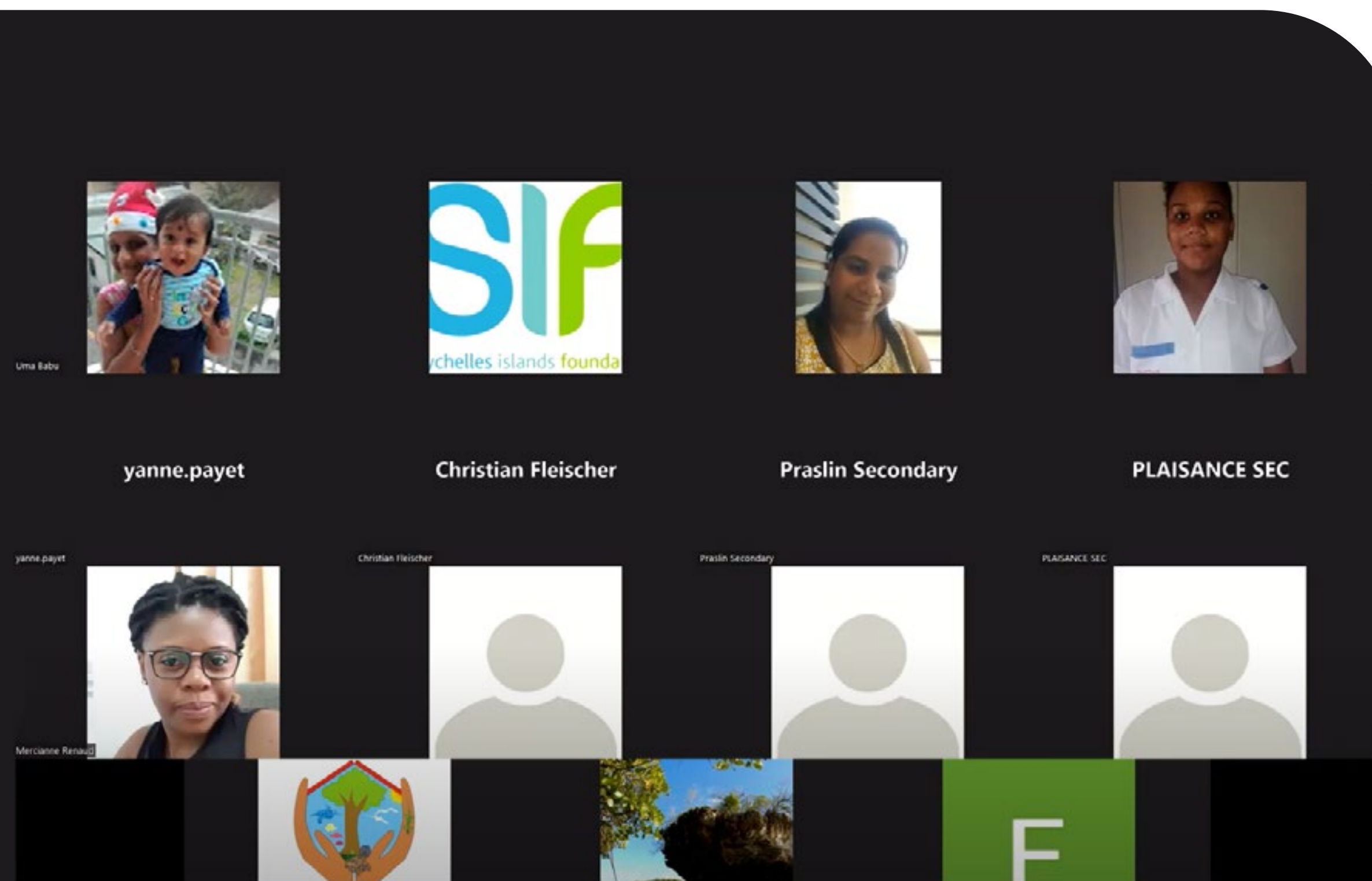
And to make it a truly coco de mer focused year, a third opportunity came when Research Associate, Dr Christopher Kaiser-Bunbury, shared his coco de mer research and expertise with Top of Mind.

[Listen here](#)

9.2 Education and Outreach

Virtual Classrooms

In 2021, SIF hosted and joined several virtual classrooms to highlight the importance of various environmental theme days.



Protected Area Day

To help highlight the importance of Seychelles' protected areas, SIF joined forces with the Island Conservation Society of Seychelles (ICS) and the Seychelles National Parks Authority (SNPA) to deliver a series of online presentations about the various protected areas under their management.

Watch the video here.

[Watch now](#)

WORLD PROTECTED AREA DAY 2021

JOIN SIF'S ONLINE PRESENTATION TO LEARN MORE ABOUT OUR PROTECTED AREAS OF SEYCHELLES!

PLATFORM: ZOOM

DATE: FRIDAY 29TH JANUARY

TIME: 1PM

SEE THE ZOOM LINK IN THE DESCRIPTION

THE PRESENTATION WILL BE RECORDED AND POSTED ONLINE ON SUNDAY 31ST JANUARY



International Tour Guide Day

To mark International Tour Guide Day, SIF organised a webinar for all Seychelles-based tour operators and guides to provide an update on the ongoing research work at the Vallée de Mai. Research staff from the Vallée de Mai conducted presentations on the monitoring and research on the black parrot, coco de mer, reptiles and yellow crazy ants (YCA).

[Watch now](#)

Estimated population size

Year	Population Size
2013	520 - 900 birds
2018	1096 - 1742 birds

Population is stable

Increase is due to better counting method
NOT more birds

Vallée de Mai SIF

Participants visible in the sidebar: netienne, Marc Jean-Bapti..., hrose, Christopher Paris

©SIF



Participants visible in the grid: Research6, Seychelles Islands Foundation, Anna's iPad, netienne, hrose, Maria, Prisca.Barbe, Christopher Paris, Marc Jean-Baptiste

The research team provides accurate updates to tour operators and guides through a virtual webinar ©SIF

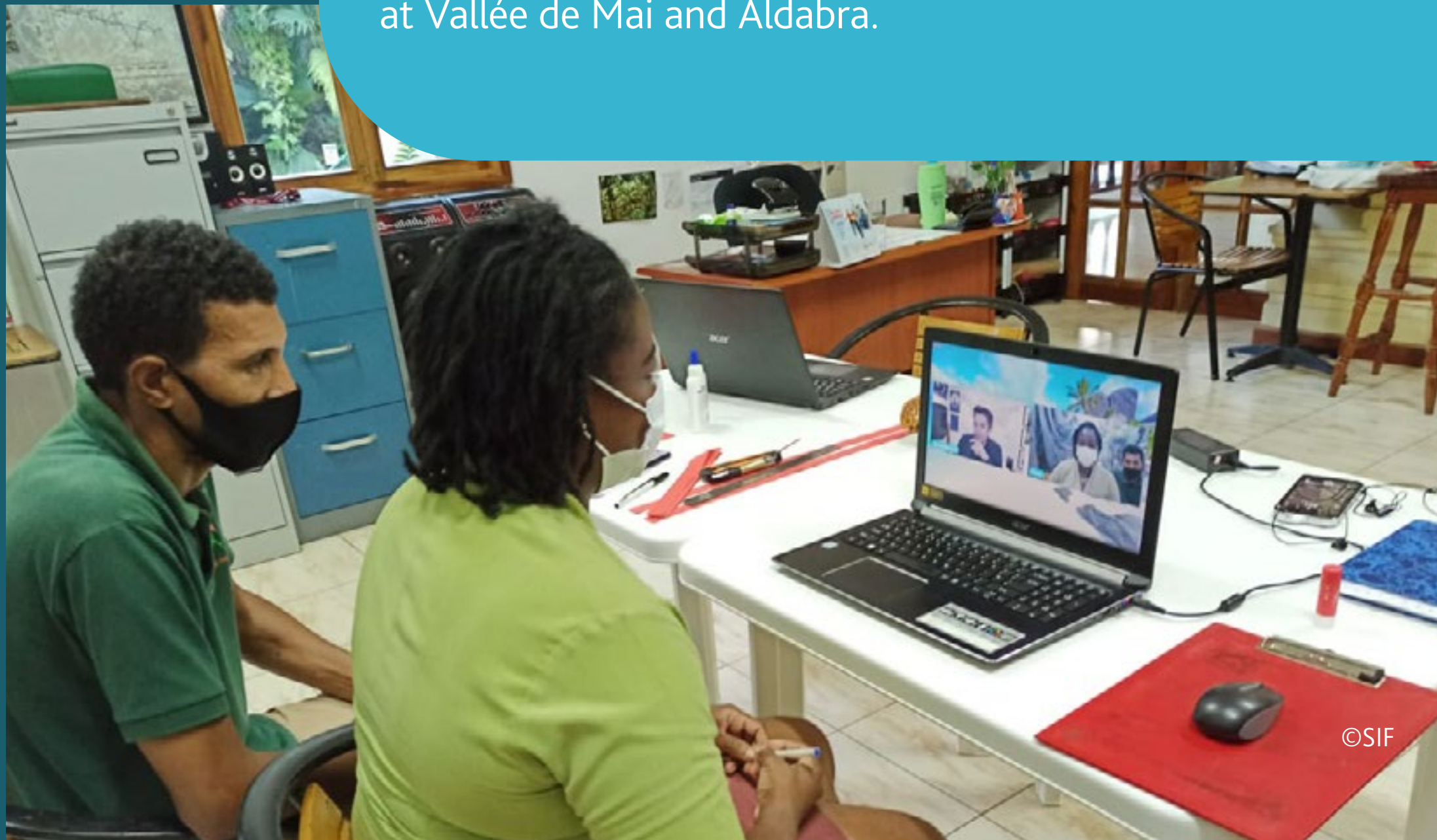


Exploring by the Seat of Your Pants

Since 2021, SIF has been working with Joe Grabowski, founder of Exploring by the Seat of Your Pants (EBTSOYP), to connect students to SIF's amazing sites.

EBTSOYP aims to inspire the next generation of scientists, explorers and conservationists and achieves this by bringing science, exploration, adventure and conservation live into virtual classrooms through speakers and field trips with leading experts across the globe.

Exploring By the Seat of Your Pants link ups have now been conducted at Vallée de Mai and Aldabra.



Partnering with SIF since 2021, Exploring by the Seat of Your Pants has been a great way to interact with kids all over the world ©SIF



Visit the Vallée de Mai with Rachel and Ms. Maria is the first book to be launched virtually in Seychelles! ©SIF

Virtual book launch for World Wildlife Day

To commemorate World Wildlife Day in March, we collaborated with the Ministry of Education, and officially launched an electronic activity book: "Visit the Vallée de Mai with Rachel and Ms. Maria". The author of the book and Vallée de Mai Science Coordinator, Aurelie Hector, is passionate about educating children and youth about the environment and its protection.

[Watch now](#)

World Environment Day

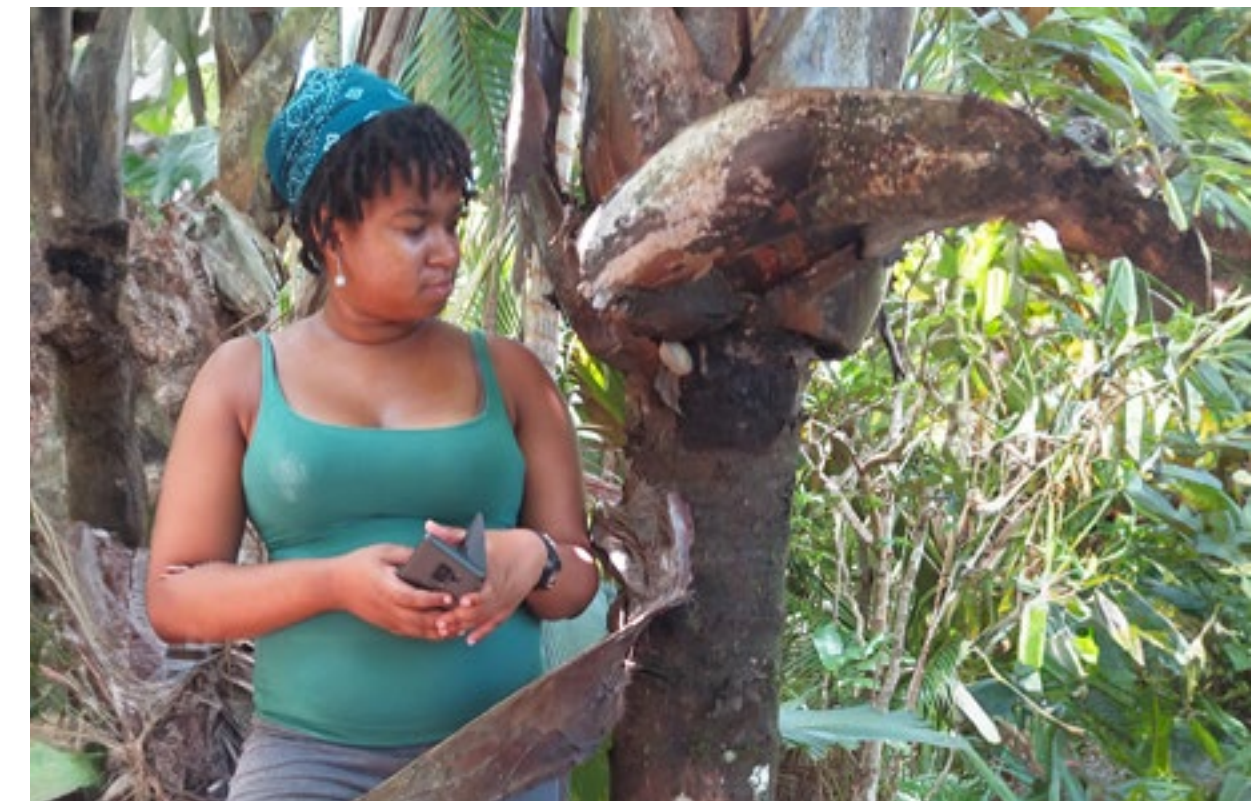
For World Environment Day a virtual trail quiz was organised for local schools, with the assistance of the Ministry of Education. In total, 66 students from 10 primary schools and 8 secondary schools participated.



World Ranger Day

To commemorate World Ranger Day on 30th July, SIF Rangers organised a live virtual link-up between all sites: Aldabra, Fond Ferdinand and Vallée de Mai. The link-up was streamed in real-time to our Facebook page.

[Watch now](#)



All photos ©SIF

The C4C project, bringing Aldabra a little closer

SIF secured a grant from the Seychelles Conservation and Climate Adaptation Trust (SeyCCAT) for a project entitled “Communications for Change” (C4C). Through C4C, SIF aims to better communicate Aldabra’s conservation value and the atoll’s vulnerability to the climate crisis. A new satellite dish was installed to upgrade communications from Aldabra.



The new satellite was installed to be up and running in just four days! ©Veronique Banane



Dr Hansen and Emma linking up with Exploring by the Seat of Your Pants, Aldabra's first virtual classroom using the new satellite dish ©Veronique Banane

SIF at Expo 2020 Dubai

After several months of contributing towards the Seychelles Pavilion for the Expo 2020 Dubai, SIF Communications and Outreach Coordinator, Jeremy Raguain was pleased to be at the Expo for the last week of October. Jeremy assisted the Seychelles Pavilion team in hosting the visiting Seychelles national delegation and provided a brief overview of Seychelles' UNESCO World Heritage Sites, which have been transported through interactive maps, representative models, short films and games.



Inside the Seychelles Pavilion ©Expo 2020 Dubai

Praslin teams celebrate International Day of Forests

To celebrate International Day of Forests in March, SIF organised tree planting days at the Vallée de Mai and Fond Ferdinand. A total of 25 SIF staff from both Fond Ferdinand and the Vallée de Mai planted 128 native pandanus ('vakwa' or screwpine) seedlings.



SIF team members from both the Vallée de Mai and Fond Ferdinand engaged in the tree planting activities ©Maria Brioche



©Maria Brioche

Raffles Seychelles and Acajou Hotel brush up on their black parrot knowledge

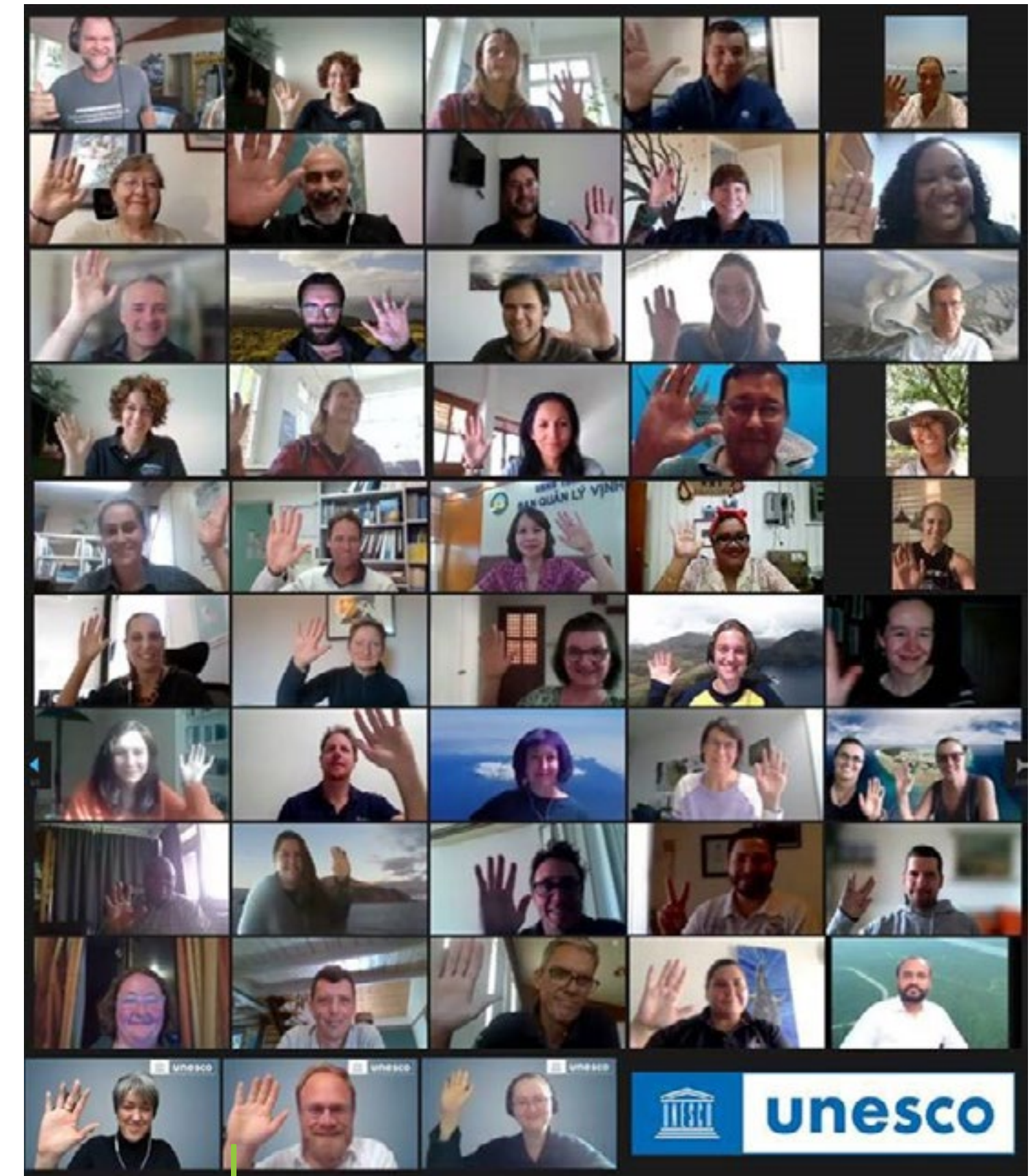
In September, SIF organised a training session with hotel staff from Raffles Seychelles and Acajou Hotel to brush up on their knowledge about the black parrot. With Raffles seeking to organise black parrot watching sessions for their guests, this training was an excellent opportunity to share correct scientific knowledge on the black parrot, its behaviour, threats and the work SIF does to better understand and protect this vulnerable species.



Monica presenting to Raffles Seychelles and Acajou Hotel staff ©Maria Brioché

UNESCO conference and new roadmap for marine World Heritage Sites

In October, members of the SIF team had the opportunity to attend and present at the virtual UNESCO Conference Identifying Critical Science Gaps at Marine World Heritage Sites. The activity resulted in the development of a strategic roadmap, which was launched during the UNESCO General Conference in November.



Anna Koester, Marine Researcher, presenting at the UNESCO Conference on Aldabra's marine programme ©SIF

International Coastal Cleanup Day

On 25th September, the Aldabra team conducted a beach cleanup around the north-west of the atoll. They cleaned over 2.36 km of coastline and collected a total of 111.2 kg of rubbish in just two hours!

Reducing or eliminating your use of single-use plastics, organising clean-ups, preventing littering from taking place and being conscious of your consumption is key
©Emma Mederic

The Praslin team take on World Clean-up Day

This year the Vallée de Mai and Fond Ferdinand team started the clean-up at Fond Ferdinand and continued the next day at Vallée de Mai including along the road from Vallée de Mai to Nouvelle Découverte.

The task is never easy, but with exemplary leadership and many hands a difficult task becomes easier ©Maria Brioché

A mermaid visits the forest

Zandile Ndhlovu, a freediving instructor, conservationist and founder of the Black Mermaid Foundation, visited the Seychelles recently. Zandile visited the Vallée de Mai on November 29th, where our Education and Outreach Officer, Maria Brioche, gave her a presentation about the Friends of Vallée de Mai Club and conducted a tour of the park.



Zandile, members of the Terrestrial Restoration Action Society Seychelles children from the Friends of Vallée de Mai Club and Baie Ste Anne School ©Maria Brioche



Zandile sharing her story and knowledge with members of the Friends of Vallée de Mai Club ©Maria Brioche

10 Scientific Publications

Coconut Crab Population

Population dynamics of the coconut crab *Birgus latro* on Aldabra Atoll, Seychelles. Led by Jennifer Appoo (ex-assistant Aldabra science coordinator) and Fernando Cagua (ex-Aldabra volunteer)

[Read more...](#)

Aldabra's Mangrove Forests

Extent change of protected mangrove forest and its relation to wave power exposure on Aldabra Atoll. Led by Annabelle Constance, in service PhD student.

[Read more...](#)

The Future of Biodiversity

Envisioning a resilient future for biodiversity conservation in the wake of the COVID-19 pandemic. Contributed to via a collaboration between Dr Nancy Bunbury and the University of Exeter.

[Read more...](#)

Conservation of Island Ecosystems

Defining and bridging the barriers to more effective conservation of island ecosystems: A practitioner's perspective. Led by April Burt (ex-Aldabra science coordinator and Dr Nancy Bunbury)

[Read more...](#)

Population Status of Tropicbirds

Combining monitoring data from multiple sites to assess population status and trends of White-tailed Tropicbirds (*Phaethon lepturus*) in the Seychelles. Led by April Burt (ex-Aldabra science coordinator).

[Read more...](#)

Green Turtle Population Recovery

Green turtle population recovery at Aldabra Atoll continues after 50 years of protection. Led by MSC student Adam Pritchard and supervised by Dr Nancy Bunbury and Cheryl Sanchez.

[Read more...](#)

Gut Retention Times of Aldabra Giant Tortoises

Larger Doesn't Mean Longer: Neither Body Size Nor Seed Size Affect the Gut Retention Times of Aldabra Giant Tortoises. Led by Dr Wilfredo Falcon and supervised by Dr Nancy Bunbury.

[Read more...](#)

Tropical Frogs Adapting to Climate Warming

Survival of climate warming through niche shifts: Evidence from frogs on tropical islands. Led by Dr Jim Labisko.

[Read more...](#)

First Insights into Coral Recruit

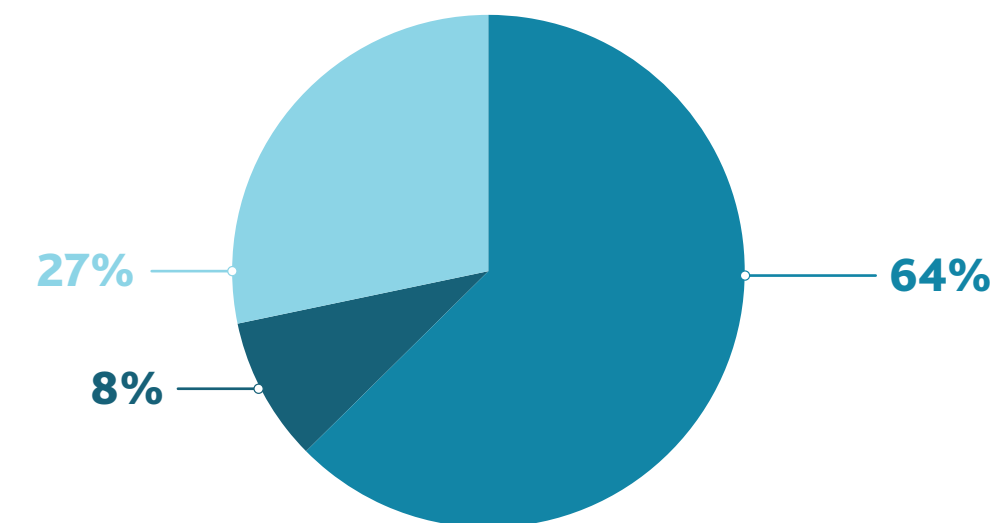
First insights into coral recruit and juvenile abundances at remote Aldabra Atoll, Seychelles. Led by Anna Koester (ex-Aldabra Marine volunteer).

[Read more...](#)

11

Finances

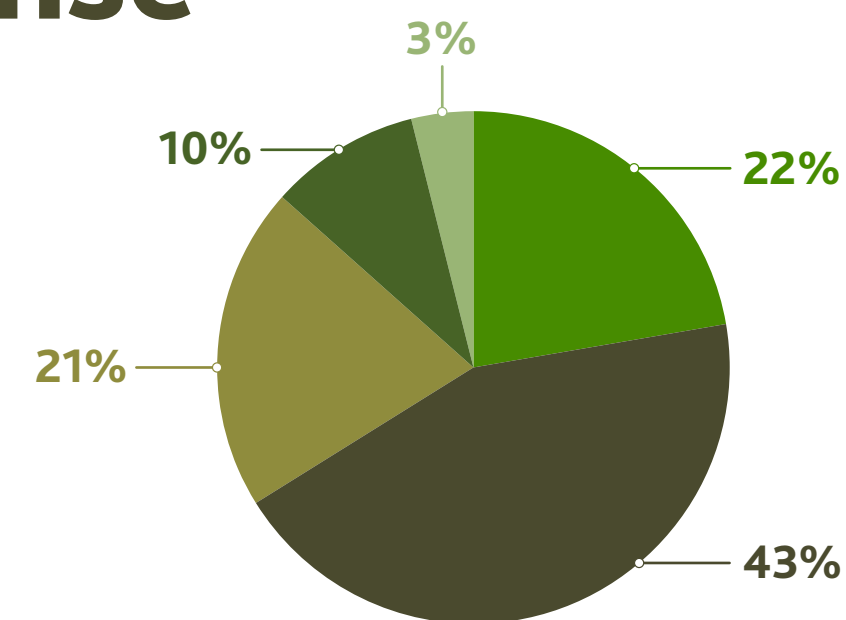
Revenue



Total SCR 37,162,221.00

Income from VDM, FF & Aldabra	23,817,191
Income from Project Activities	3,139,356
Income from Financial Instruments	10,205,674

Expense



Total SCR 39,080,371.00

Net Deficit SCR -1,918,150.00

Direct Cost	8,770,080.00
Employee Cost	16,972,916.00
Operational & Marketing Cost	8,180,121.00
Expenses for Project Activities	3,850,205.00
Other Expenses	1,307,049.00

Thanks and acknowledgements

Our thanks to...

The outgoing Patron President of the Republic of Seychelles, Wavel Ramkalawan.

SIF's Board of Trustees

- Mr. Maurice Loustau-Lalanne Chairman
- Mr. Bernard Jackson
- Mr. Calvin Gerry
- Ms. Veronica Lanza
- Dr Frauke Fleischer-Dogley CEO
- Dr Lindsay Turnbull
- Ms. Lyndy Bastienne
- Mrs. Marie May Muzungaile
- Mr. Patrick Lablache
- Prof. Peter Edwards
- Ms. Sherin Francis
- Mr. Selby Remie
- Prof. Stephen Blackmore
- Sir Tim Smit
- Dr Victorin Laboudallon

Our Supporters

- Children's Special Fund Office
- International Union for the Conservation of Nature (IUCN)
- European Union
- Global Environment Facility (GEF)
- UNESCO
- Indian Ocean Commission
- Environment Trust Fund Seychelles
- Mauritius Commercial Bank
- University of Zurich
- Coco de Mer hotel, Praslin
- BDO Associates
- UNDP – Project Coordination Unit
- The Royal Society
- Seychelles Broadcasting Corporation (SBC)
- Today Newspaper
- Raffles Seychelles
- AP Designs and Créatifs
- Mauritius Commercial Bank (Seychelles) Ltd
- Seychelles Conservation and Climate Adaptation Trust (SeyCCAT)
- Rosa Luxembourg Foundation
- Biodiversity and Protected Area Management Programme (BIOPAMA)
- German Commission for UNESCO
- Franklinia Foundation

Our Partners and Associates

- Ministry of Environment, Energy and Climate Change
- Ministry of Education
- Seychelles National Parks Authority
- Seychelles Fishing Authority
- Seychelles Coast Guard
- Island Development Company
- Island Conservation Society
- Praslin Development Fund
- Seychelles National Meteorological Service
- Simon Taylor
- Global Vision International (GVI) Seychelles
- Seychelles Police Force
- Seychelles People's Defence Force
- Global Vision International (GVI) Seychelles
- Seychelles Police Force
- Seychelles People's Defence Force
- Indian Ocean Turtle project, La Reunion

Our Research Collaborators

- Prof. Peter Edwards (ETH Zurich, Switzerland)
- Dr Lindsay Turnbull (Queen's College, University of Oxford, UK)
- April Burt (Queen's College, University of Oxford, UK)
- Noam Vogt-Vincent (Earth Sciences, University of Oxford, UK)
- Dr Lori Lach (James Cook University, Australia)
- Prof. Brendan Godley (University of Exeter, UK)
- Prof. David Newbery (University of Bern, Switzerland)
- Dr. Olivier Bousquet (Météo-France & Laboratoire de l'Atmosphère et des Cyclones, France)
- Anna Koester and Prof. Christian Wild (University of Bremen, Germany)
- Dr Wilfredo Falcon (University of Zurich, Switzerland)
- Dr David Gower (Natural History Museum, London, UK)
- Dr Jim Groombridge (Durrell Institute of Conservation and Ecology, University of Kent, Canterbury, UK)
- Dr Dennis Hansen (University of Zurich, Switzerland)
- Philip Haupt (Rhodes University, South Africa)
- Dr Christopher Kaiser-Bunbury (University of Exeter, UK)
- Dr Jim Labisko (DICE, University of Kent, UK)
- Dr Simon Maddock (Natural History Museum, London, UK)
- Dr Arpat Ozgul (University of Zurich, Switzerland)
- Dr Gabriela Schaepman-Strub (University of Zurich, Switzerland)
- Annabelle Constance (University of Zurich, Switzerland)
- Dr Janske van de Crommenacker (University of Groningen, The Netherlands)



The Seychelles Islands Foundation (SIF), is a non-profit charitable organisation that was established as a public trust by the government of Seychelles in 1979. SIF manages and protects the UNESCO World Heritage Sites of Aldabra Atoll and the Vallée de Mai as well as the Fond Ferdinand reserve. It has the President of Seychelles, Wavel Ramkalawan, as Patron.

SIF is managed by a Board of Trustees of 15 members who are appointed by the President. This board represents individuals and organisations from both Seychelles and overseas who are concerned with the conservation of biodiversity and ecosystems, and bring relevant expertise and knowledge to the management of SIF.

SIF is the longest established local organisation working in nature conservation in Seychelles and has taken a pioneering management approach by twinning the two sites. The foundation is mandated and dedicated to ensuring that the UNESCO World Heritage Sites of Seychelles are well-managed protected areas where conservation, research, education and tourism are sustainably balanced. A major focus is on scientific research to direct, support and improve the evidence base for conservation management of the unique biodiversity and ecosystems of these two very different sites.

To successfully operate and protect two World Heritage Sites which are more than 1000 km apart, each with their specific set of challenges, SIF relies on income generated primarily by entrance fees and sales from the Vallée de Mai. This is supplemented by project funding, grants and donations. Aldabra does provide some direct income through visitor impact fees but piracy in the Western Indian Ocean, and now Covid, has compromised this source of revenue in recent years. SIF's work with and management of these sites will continue to be dependent on visitor numbers and the generosity of our supporters and funders for the foreseeable future.

If you are passionate about the work we do and want to help, then there are several ways you can get involved!



SPREAD THE WORD

Help us share our exciting updates by interacting with our pages on Facebook, Twitter and YouTube and signing up for our e-newsletter.



VISIT VALLÉE DE MAI & FOND FERDINAND

There is no better way to truly understand and support our work than by exploring the sites. Your entrance fees go towards the conservation and management of both Seychelles' World Heritage Sites, the Vallée de Mai and Aldabra Atoll, and the Fond Ferdinand Reserve.



ATTEND EVENTS

We often need assistance at our outreach events. If you have some free time and want to get involved, we would welcome your support and/or participation in these events, give us a call or email for more information. Check out our Events page for details of upcoming events.



JOIN US

A great way to contribute is to work for SIF, either as a paid member of staff or as a volunteer. Check out our Jobs page for more details.



MAKE A GIFT

If you would like to make a financial donation to SIF contact info@sif.sc. Your support could purchase some of the vital equipment required for our work.

www.sif.sc

@SeychellesIslandsFoundation

@SIF_Seychelles

@sif_seychelles

@seychellesislandsfoundatio2981

Seychelles Islands Foundation