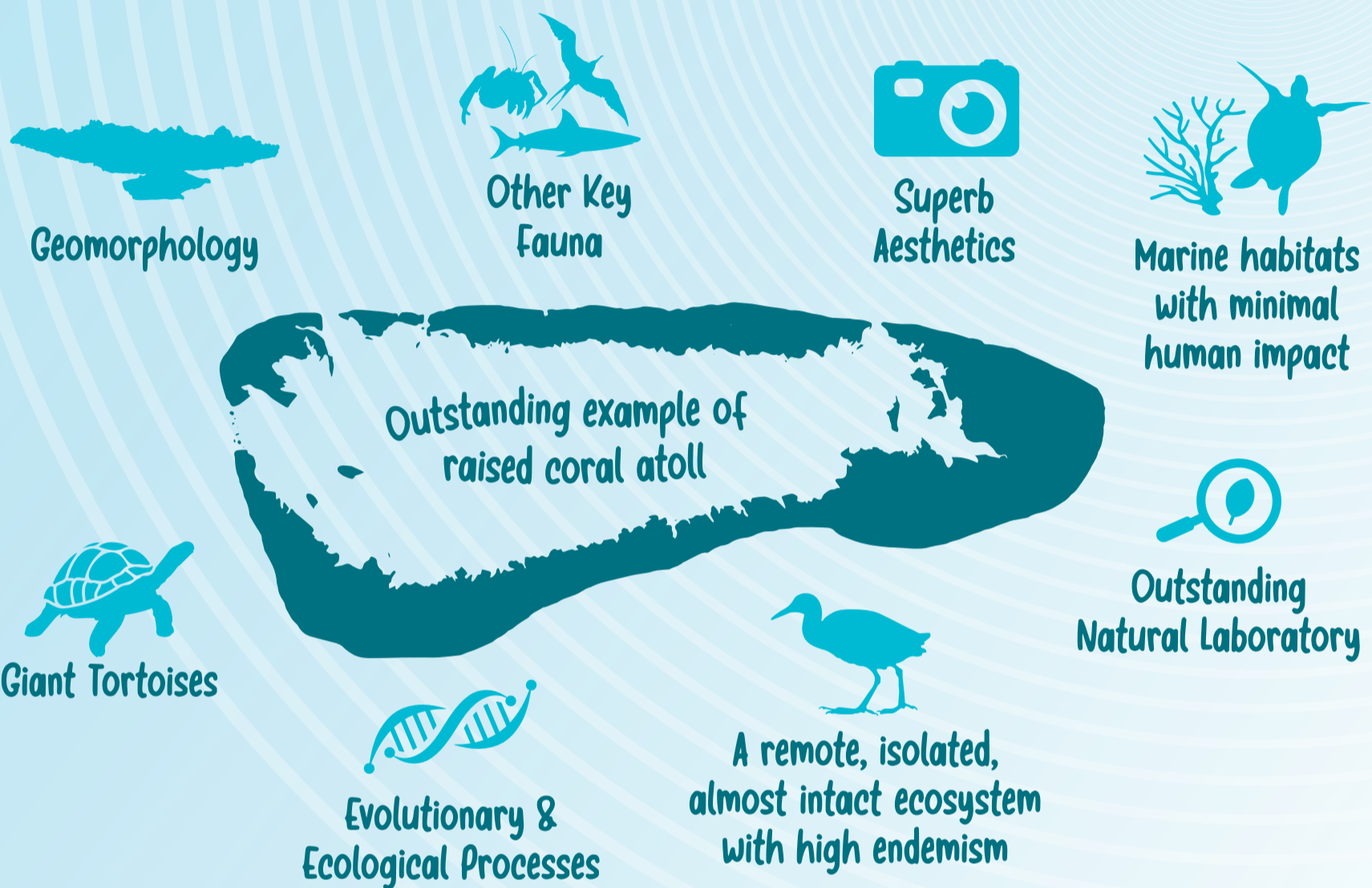


Outstanding Universal Value Aldabra Atoll



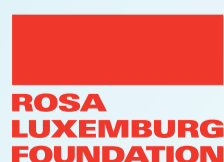
A World Heritage Site

Any of various areas or objects inscribed on the United Nations Educational, Scientific and Cultural Organization (UNESCO) World Heritage List. The sites are designated as having Outstanding Universal Value under the Convention Concerning the Protection of the World Cultural and Natural Heritage, which was adopted by UNESCO in 1972.



Outstanding Universal Value

Cultural and/or natural significance which is so exceptional as to transcend national boundaries and to be of common importance for present and future generations of all humanity. As such, the permanent protection of this heritage is of the highest importance to the international community as a whole." In order to be considered of Outstanding Universal Value, a property must meet one or more World Heritage Criteria.



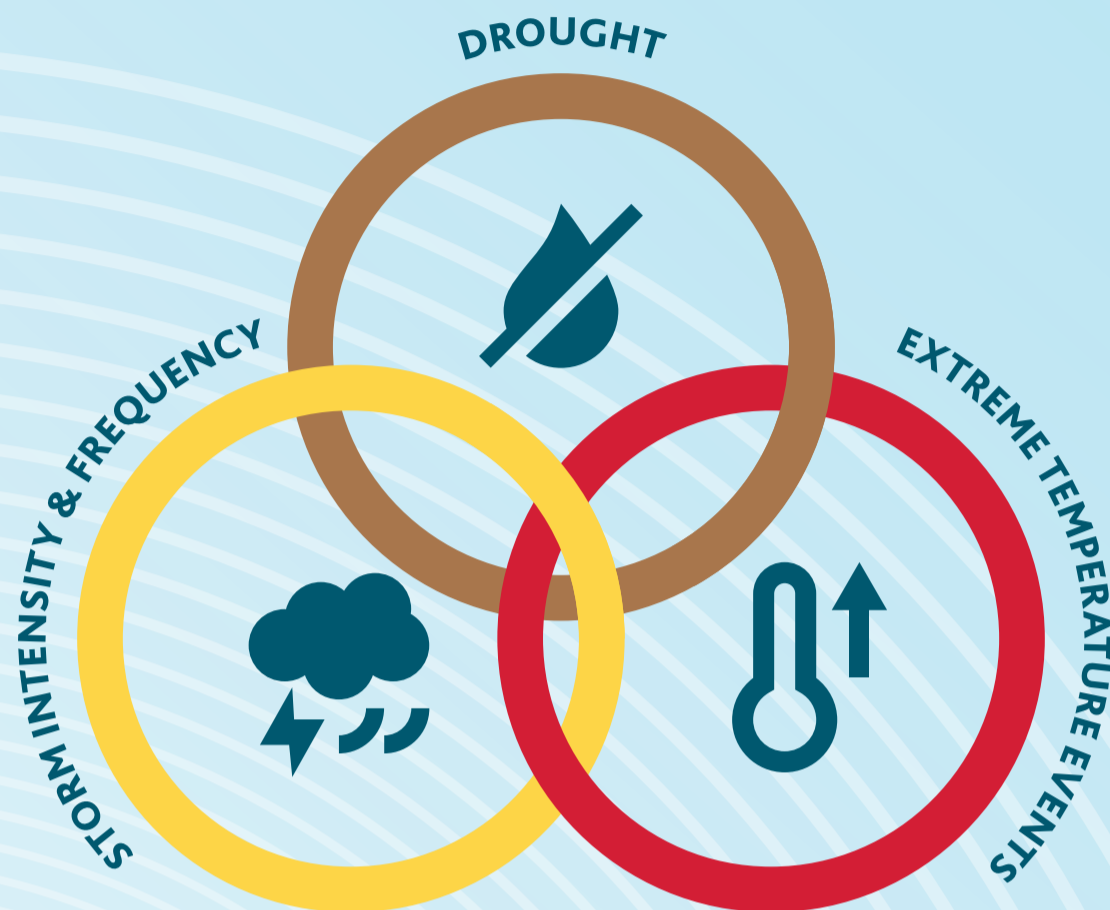
www.sif.sc

SOURCE

Encyclopedia Britannica
<https://www.britannica.com/topic/World-Heritage-site>

Operational Guidelines for the Implementation of the World Heritage Convention (WHC.19/01 - 10 July 2019)
<https://whc.unesco.org/en/compendium/100>

Key Climate Stressors to Aldabra Atoll



Impact of Climate Stressors to Key Values



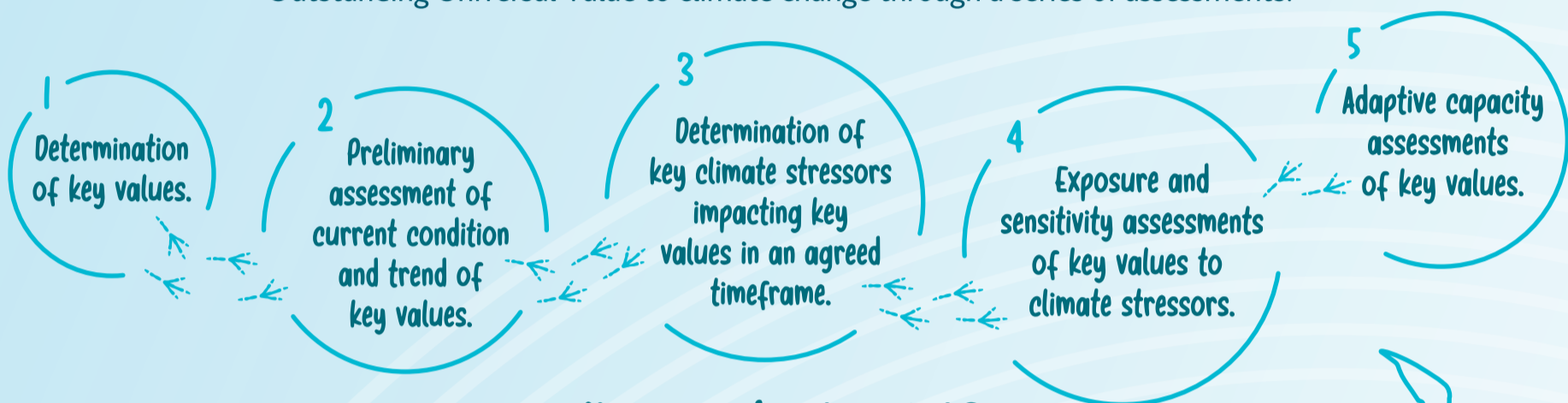
Climate Vulnerability Index (CVI)

CVI Process on Aldabra



What is a CVI?

A climate vulnerability index (CVI) is a rapid assessment tool specifically developed for the application in World Heritage properties. It assesses the vulnerability of the site's Outstanding Universal Value to climate change through a series of assessments:



Why conduct a CVI?

Climate change is one of the fastest growing global threats to World Heritage properties, many of which are already being impacted.

The credible basis from the CVI consultation will help inform management and adaptation of the ecosystem and its attributes in the face of the changing climate.

Why conduct a CVI on Aldabra?

Aldabra is home to many unique attributes and wildlife, whose roles are vital in the functioning of ecosystems regionally and globally. A CVI will put Aldabra in the best position to combat the impacts of climate change.

What are the outcomes of a CVI?

The assessed vulnerability of Aldabra's Outstanding Universal Value to key climate stressors which will better inform its management and protection as well as aid towards an Aldabra climate change adaptation plan.

