



# Yellow crazy ants in the Vallée de Mai



Emmanuel Morel & Lorraine Cook





On

- Top
- Mu
- Sp
- Sp
- For
- For









# Fourmi maldiv in Seychelles

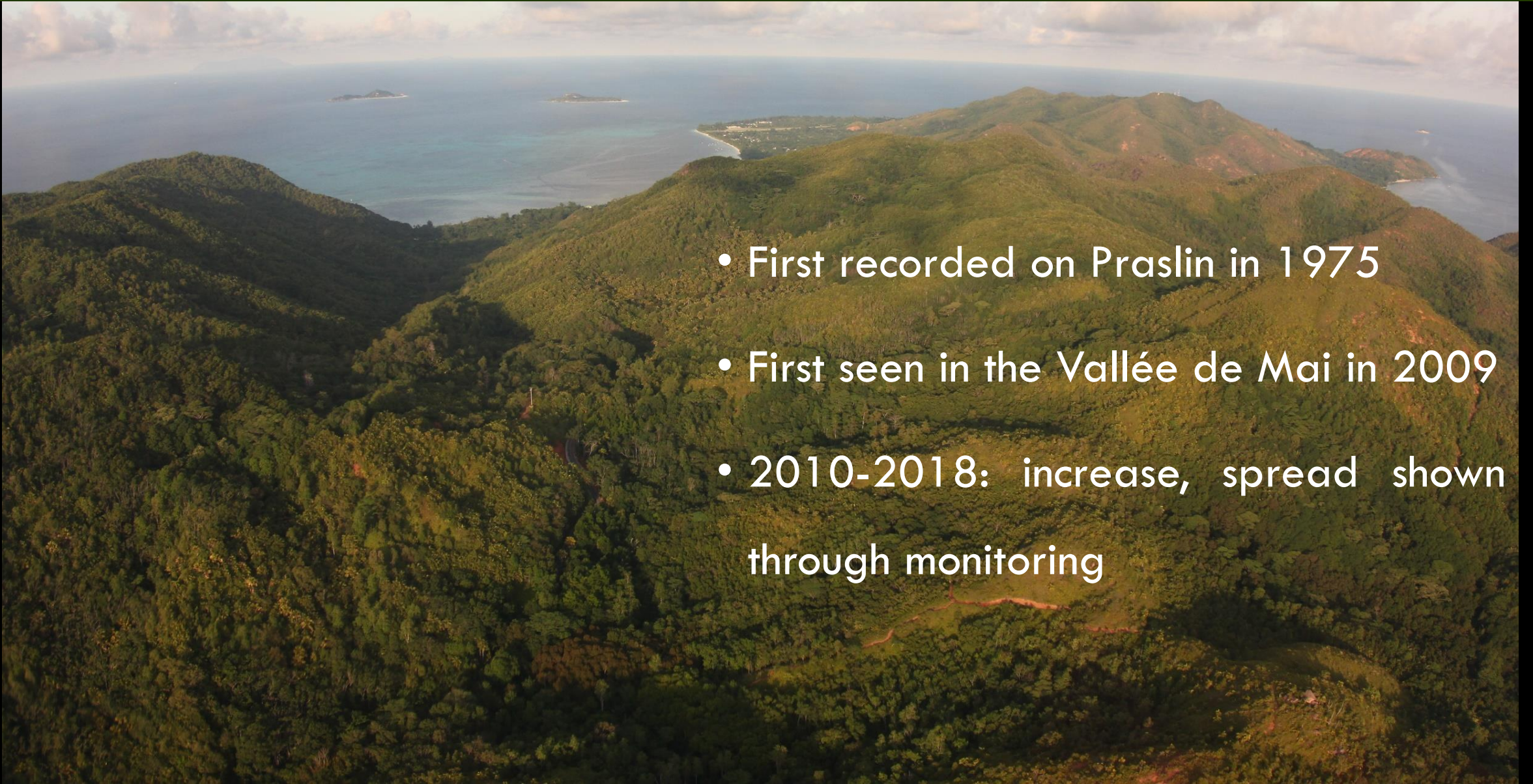


- Introduced around 1962
- Nest density 700 per ha
- Most nests: 4000 ants incl. 40 queens
- Largest 40,000 ants, 300 queens!!
- Sugar and protein eaten all year round

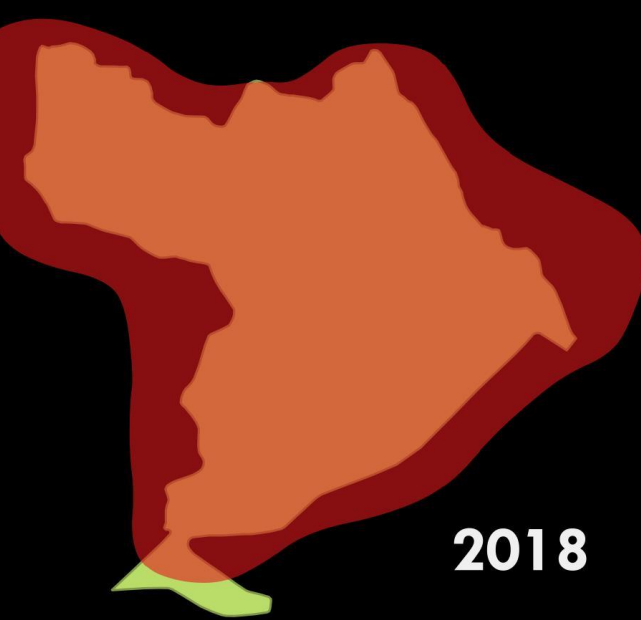
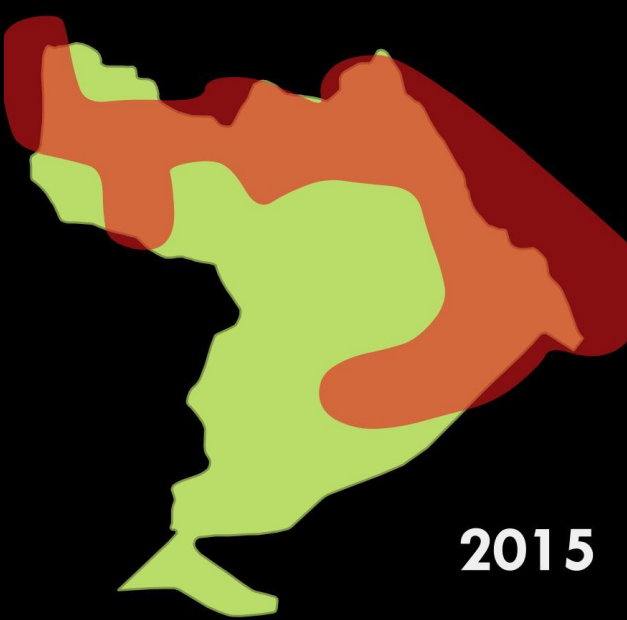
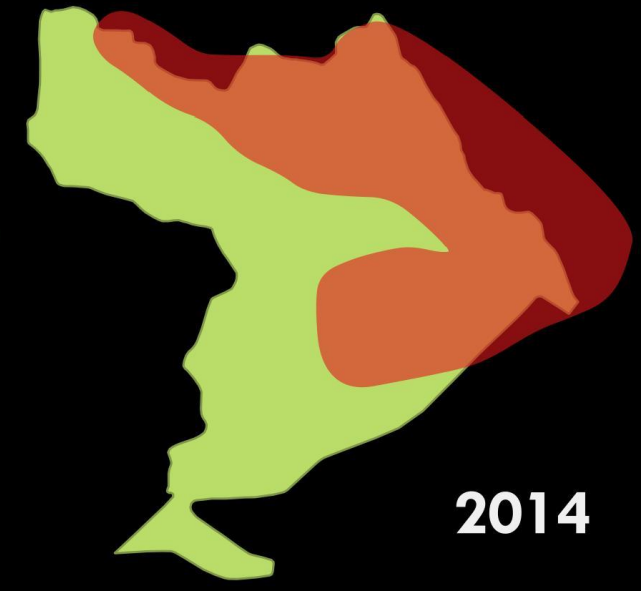
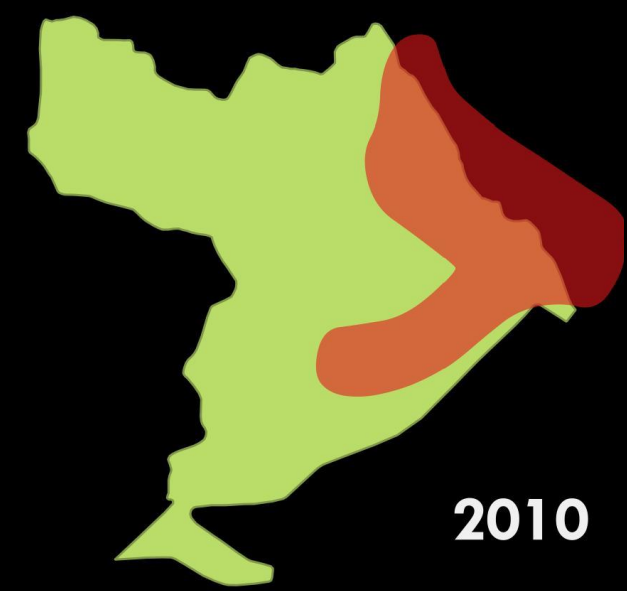


# YCA spread in the Vallée de Mai

- First recorded on Praslin in 1975
- First seen in the Vallée de Mai in 2009
- 2010-2018: increase, spread shown through monitoring







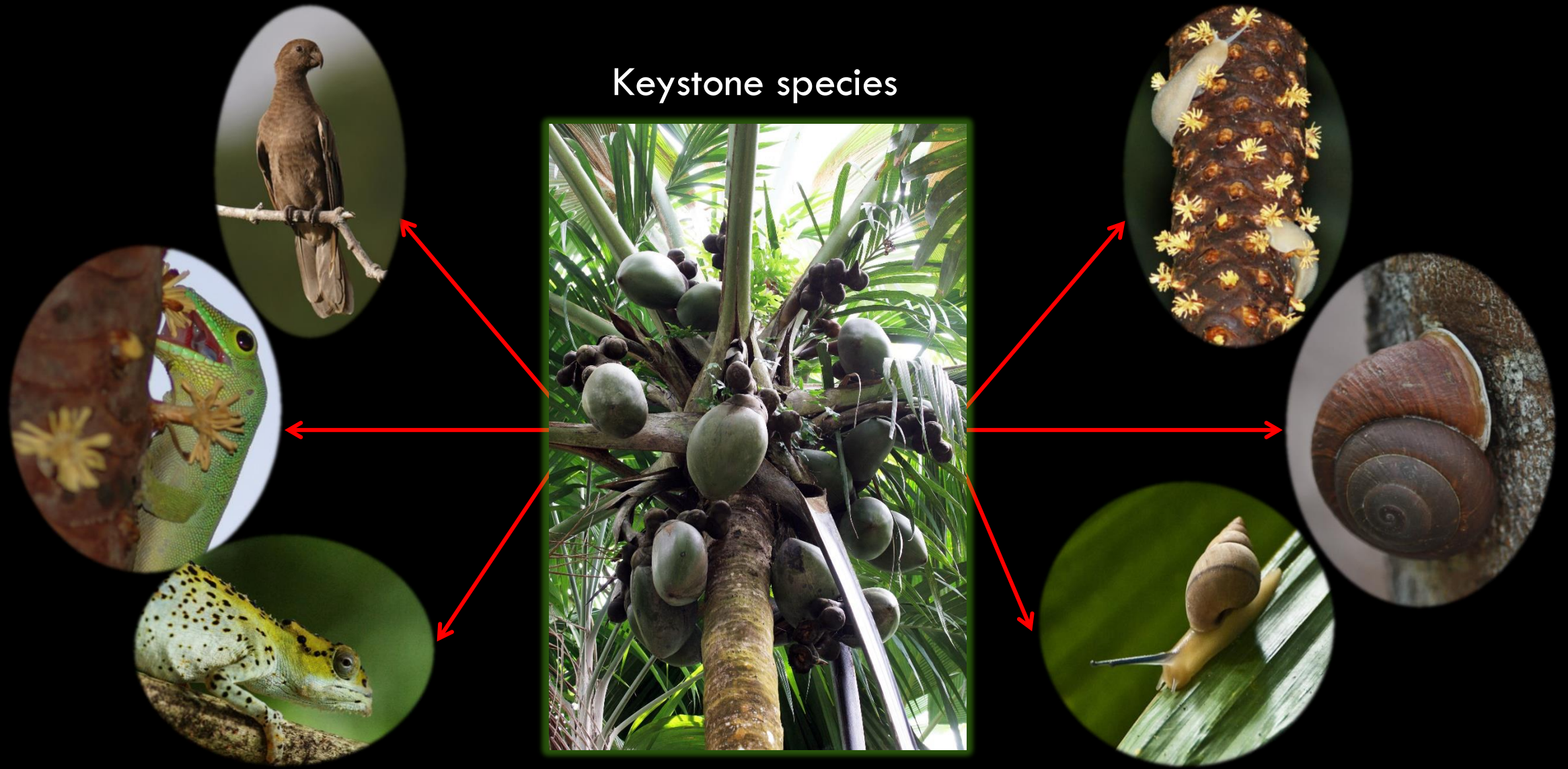


# YCA impacts in Vallée de Mai





# Loss of native species = loss of forest function





# Taking action

- Annual pitfall surveys
- *Inva'Ziles* in 2017
- Boric acid bait stations
- Education and outreach





# Taking action

- Control is possible
- Avoid non-target impacts
- Target all stages of life cycle





# Monitoring YCA

High YCA numbers = card counts

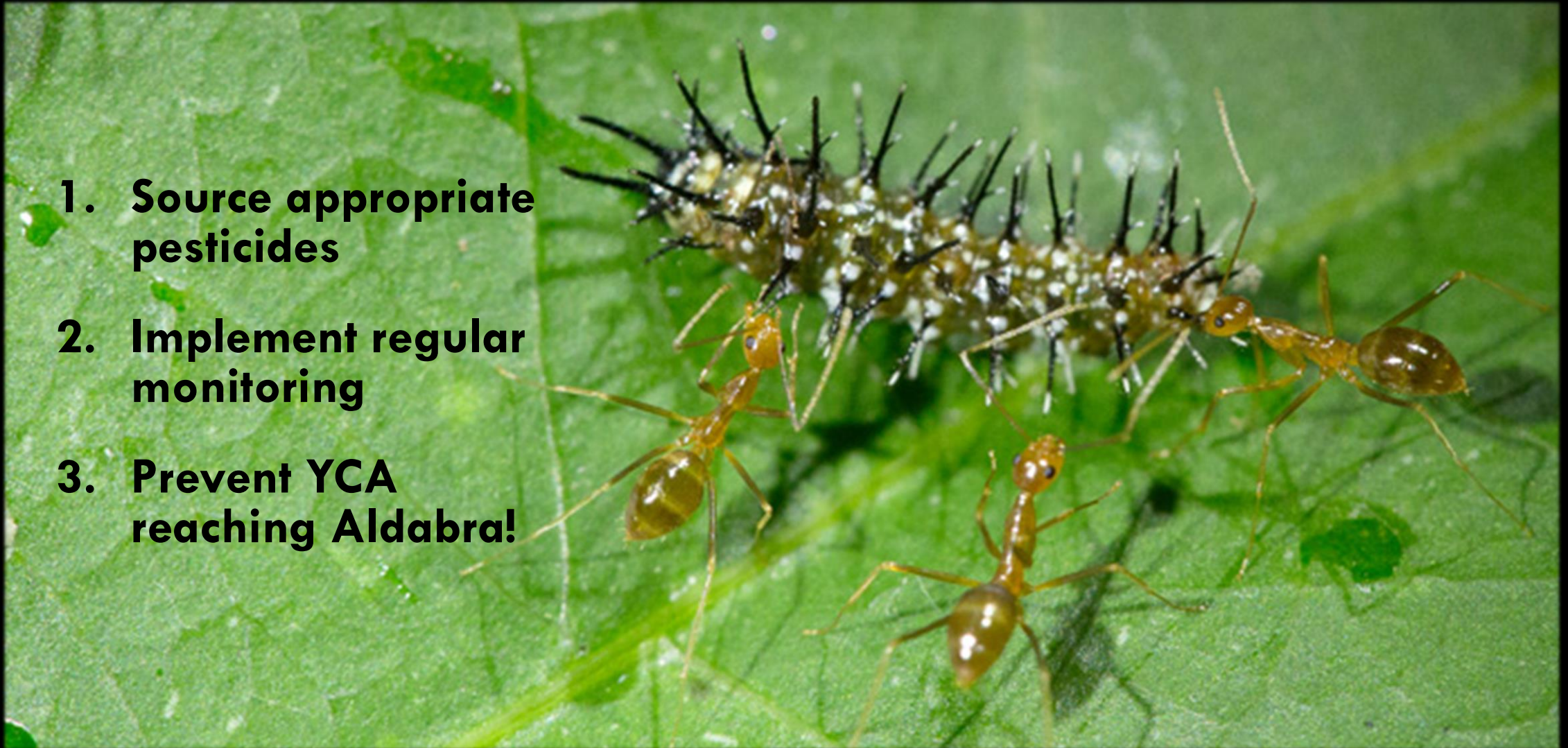
Medium YCA numbers = attractive lures





# Next steps

1. **Source appropriate pesticides**
2. **Implement regular monitoring**
3. **Prevent YCA reaching Aldabra!**





# Thank you....

- **Vallée de Mai staff**
- SIF Head Office and Aldabra staff for all their biosecurity efforts
- SIF board members
- Seychelles Pesticides Board
- Ken at KM AntPro
- Dr Lori Lach (James Cook University)
- Dr Monica Gruber (Pacific Invasives)
- **Invaz'iles**

